

3. Abbreviations

The following abbreviations are used in this parts list.

ASSY.	Assembly	KPH	Kilometers per hour
COMP.	Complete	MPH	Miles per hour
R.	Right	L (100L)	Link (100Links)
L.	Left	A.C.	Alternating current
STD.	Standard	D.C.	Direct current
MM	Millimeter	IN.	Inlet
G	Gram	EX.	Exhaust
T (22T)	Tooth (22Teeth)	FR.	Front
A	Ampere	RR.	Rear
V	Volt	HEX.	Hexagonal
W	Watt	A.M.	Attaching mark
		T.M.	Transcript mark

4. Dimensions

All dimensions are given in millimeters (mm) except in the case of steel balls, tires and tire tubes.

Parts	Example	Interpretation
Bolt (Screw)	6×12	6mm diameter, 12mm length
Pin	8×14	8mm diameter, 14mm length
O-Ring	9.5×1.6	9.5mm diameter, 1.6mm thickness
Oil seal	14×24×5	14mm inside diameter, 24mm outside diameter, 5mm thickness
Tube	5×130	5mm inside diameter, 130mm length

5. Supersedence of parts

Part numbers given under the part name in the "Description" column indicate that the part number has been superseded by that part number. HONDA may make such supersedence without notice.

6. Assemblies

Sections framed with broken lines in the exploded view drawings are available as complete assemblies. (Their individual parts can also be obtained.)

7. Required quantity

The number given in the "Reqd. No." column indicates the quantity of parts used in the section described in that block.

Parts with quantities in () represent optional parts.

Part whose required number is "N", is part whose required number can be selected at need.

8. Part modifications-applicable serial numbers

In cases where a part has been modified, the serial number of the first vehicle (or frame, engine, carburetor) bearing the modification is listed in the "Serial No." column.

9. Models, area codes and initial serial numbers

Models, area codes and initial serial Nos. given in this parts list can be identified as follows.

Parts with area codes are exclusive for models destined for countries designated.

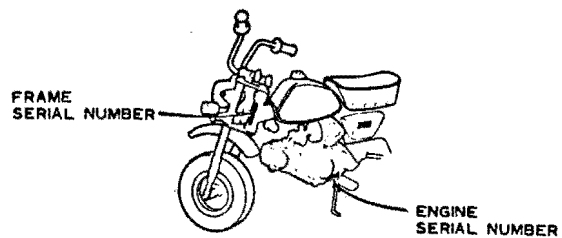
If no area codes are listed, parts are for common use.

Model	Area code	Type	Applicable engine serial No.	Applicable frame serial No.	Applicable carburetor identification No.
Z50J	U	Australia	Z50JE-1104307~1188200	Z50J-1105278~1197456	PA03A <u>A</u> ~PA03A <u>B</u>
	DK	General export (KPH)	Z50JE-1104307~1188200	Z50J-1104777~1197575	
	DM	General export (MPH)	Z50JE-1104307~1188200	Z50J-1104777~1196765	
	G	Germany	Z50JE-1108755~1188105	Z50J-1108749~1197480	PA02A <u>A</u>
	F	France	Z50JE-8109026~812852B Z50JE-1141579~1161771 Z50JE-6316158~6323513	Z50J-1109454~1196095	PA03A <u>A</u> ~PA03A <u>B</u>
	SA	South africa	Z50JE-1186351~1187600	Z50J-1195646~1196975	PA03A <u>B</u>

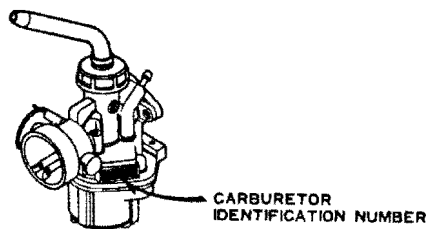
* Of carburetor identification numbers, only the portions underlined in the example below are used for registration.

PA03 A A KC 7

10. Location of stamped serial number



B130A



B130B

11. This parts list is compiled as of September 10, 1979.

HOW TO USE THE FLAT RATE TIME (F.R.T.)

This F.R.T. (Flat Rate Time) is used to determine the standard labor time allowed for replacement of parts covered by the warranty during the period the warranty is in effect. The F.R.T. for those parts which are not listed herein should be determined from the operation closely related to the replacement of that part.

1. The F.R.T. is based on the following servicing conditions

- A liberal allowance is added to the net servicing time.
- Standard times specified are based on the condition that the necessary servicing tools listed in the service manual (motorcycle) which describes the HONDA service policy are available close at hand and the work performed by a mechanic with normal skill.
- Time required for inspection and operational test following the servicing is included in the F.R.T.

2. Method of computing

The job times are listed in tenth of an hour to simplify computation.

- (Example) 0.3 = 18 minutes
5.6 = 5 hours and 36 minutes

CONVERSION CHART			
Hours	Minutes	Hours	Minutes
0.1	6	0.6	36
0.2	12	0.7	42
0.3	18	0.8	48
0.4	24	0.9	54
0.5	30	1.0	60

3. Computing the F.R.T.

When several jobs are performed at the same time, make the calculation in the following manner.

a. Jobs of non duplicated nature

The F.R.T. for the job is obtained by totalling the F.R.T. for each part replaced.

(Example) Replacement of cylinder and clutch spring.

Service item	F.R.T.
Cylinder	1.0
Clutch spring	0.8

The F.R.T. for the job is: $1.0+0.8=1.8$

b. Jobs of duplicated nature

Take the F.R.T. for the last part to be replaced.

(Example) Replacement of piston and cylinder head gasket.

Service item	F.R.T.
Cylinder head gasket	0.8
Piston	1.2

The F.R.T. for the job is: 1.2

c. Jobs of partially related nature

Total up the F.R.T. for all of the parts replaced and then subtract the F.R.T. for the duplicated operation.

(Example) Replacement of gear shift drum and crankshaft assembly.

Service item	F.R.T.
Gear shift drum	☆ 3.0
Crankshaft	☆ 3.3
Crankcase disassembly	☆ 2.8

The F.R.T. for the job is: $(3.0+3.3)-2.8=3.5$

Crankcase disassembly is the duplicated operations.

● The F.R.T. shown with (☆) includes engine removal and installation.

4. Operations other than replacing parts.

a. Removal and installation

No.	Service item	F.R.T.
1	Engine	1.2
2	Cylinder head	0.8
3	Carburetor	0.3

b. Adjustment, measurement and cleaning

Engine

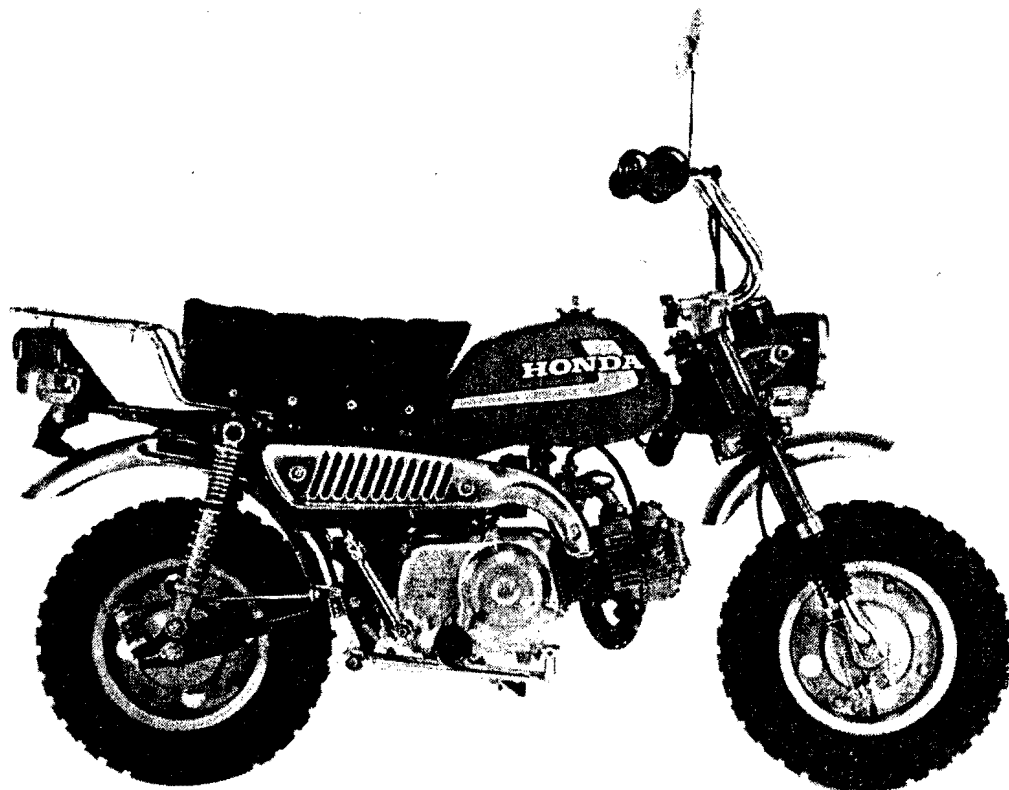
No.	Service item	F.R.T.
1	Point-adjustment (including ignition timing adjustment)	0.3
2	Ignition timing-adjustment	0.2
3	Spark plug-adjustment and cleaning	0.1
4	Tappet adjustment	0.2
5	Carburetor idle-adjustment	0.2
6	Engine oil-inspection (excluding oil change)	0.2
7	Clutch-adjustment	0.1
8	Cleaner element-cleaning	0.2
9	Compression-pressure measurement	0.1
10	Battery-checking of electrolyte level and gravity	0.1
11	Carburetor-float level measurement	0.4
12	Oil filter screen-cleaning	0.6

Frame

No.	Service item	F.R.T.
1	Brake-adjustment (front)	0.1
2	Brake-adjustment (rear)	0.1
3	Brake-operation test	0.1
4	Headlight-aimings	0.2
5	Drive chain (includes tension adjustment however, does not include sprocket)	0.1

c. Overhaul

No.	Service item	F.R.T.
1	Carburetor	0.6

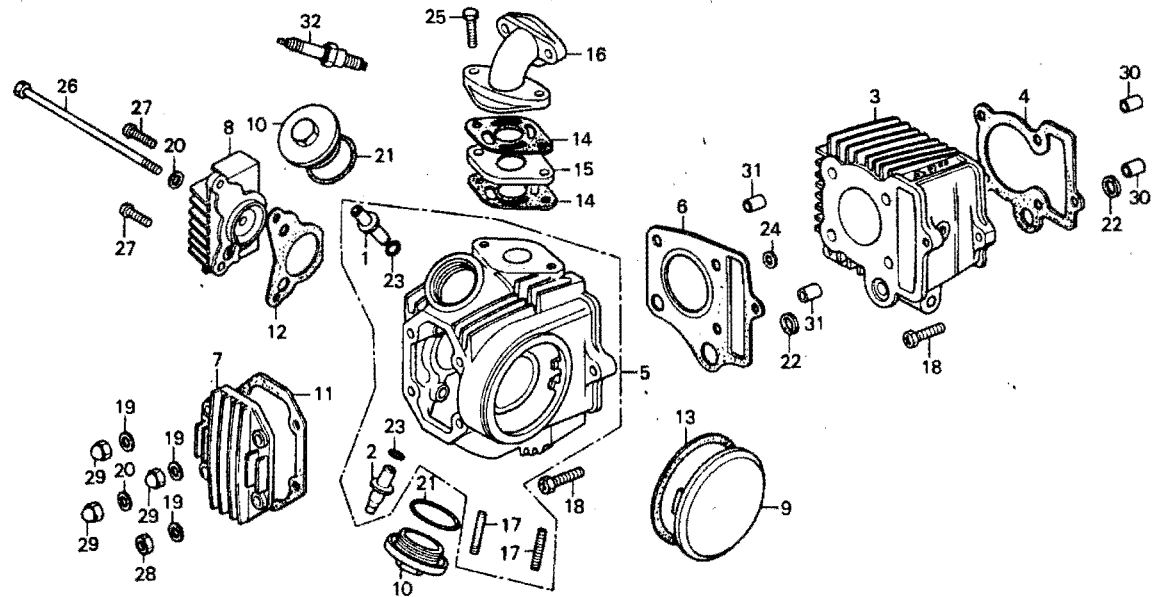


Z50J1-DK

C 2

E-1

Cylinder · Cylinder head



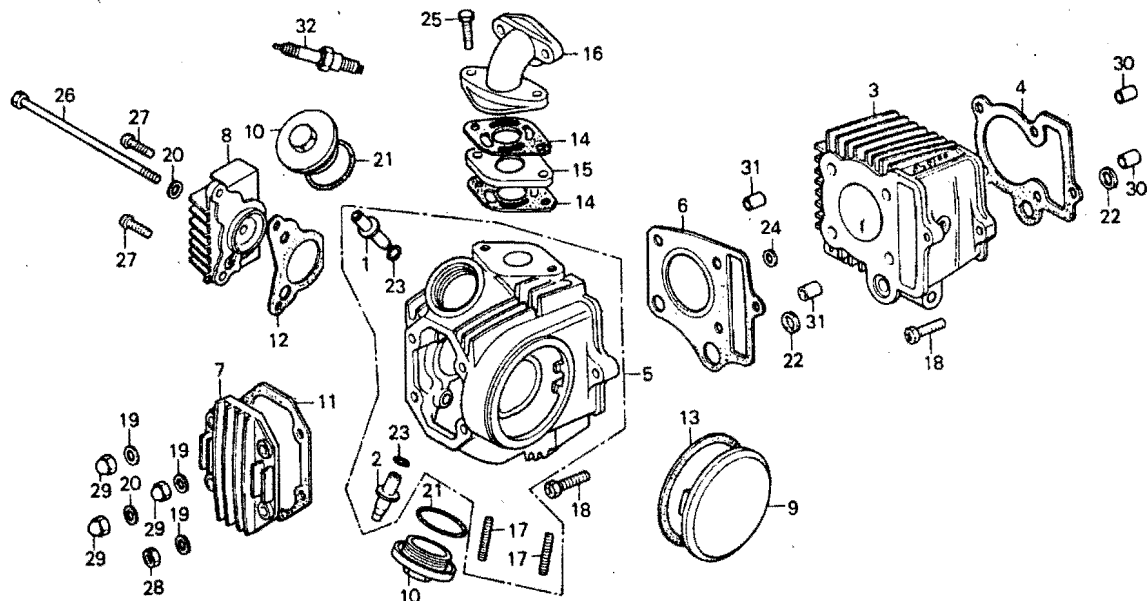
B130-1

Service item	F.R.T.	Ref. No.	Part No.	Description	Reqd. No. Z50J1	Serial No.	Area code
VALVE GUIDE	1.2	1	12021-035-811	GUIDE, IN. VALVE	1		
•Reaming Included add 0.1		2	12023-051-320	GUIDE, EX. VALVE	1		
Valve seat refacing excluded. If it refaced add more 0.2		3	12101-041-030	CYLINDER COMP.	1	1178230	DK, DM, G, SA, U
			12101-041-040	CYLINDER COMP.	1	6323403	F
CYLINDER COMP.	1.0				1	1178231	DK, DM, G, SA, U
•CYLINDER GASKET					1	6323404	F
•Boring Honing Excluded							
CYLINDER HEAD COMP.	1.4	4	12191-118-670	GASKET, CYLINDER	1		
CYLINDER HEAD GASKET	0.8	5	12200-041-030	HEAD COMP., CYLINDER	1	1186720	DK, DM, G, SA, U
and its related parts					1		F
			12200-041-040	HEAD COMP., CYLINDER	1	1186721	DK, DM, G, SA, U
CYLINDER HEAD COVER	0.1	6	12251-065-740	GASKET, CYLINDER HEAD	1		
•R/L HEAD SIDE COVER		7	12301-035-000	COVER, CYLINDER HEAD	1		
INLET PIPE and its related parts	0.2	8	12331-035-000	COVER, R. CYLINDER HEAD SIDE	1		
6x32 STUD BOLT	0.3	9	12341-035-000	COVER, L. CYLINDER HEAD SIDE	1		
•add 0.1		10	12361-035-000	CAP, TAPPET ADJUSTING HJLE	2		
SPARK PLUG	0.1	11	12391-035-000	GASKET, CYLINDER HEAD COVER	1		
		12	12394-035-000	GASKET, R. CYLINDER HEAD SIDE COVER	1		
		13	12395-035-000	GASKET, L. CYLINDER HEAD SIDE COVER	1		
		14	16201-045-000	GASKET, INSULATOR	2		
		15	16211-045-010	INSULATOR, IN. PIPE	1		
		16	17111-130-000	PIPE, IN.	1		DK, DM, F, SA, U
			17111-130-610	PIPE, IN.	1		G
		17	90033-041-000	BOLT, STUD, 6x32	2	1187380	DK, DM, G, SA, U
			90033-041-010	BOLT, STUD, 6x32	2	1187381	F
					2		DK, DM, G, SA, U



E-1

Cylinder • Cylinder head



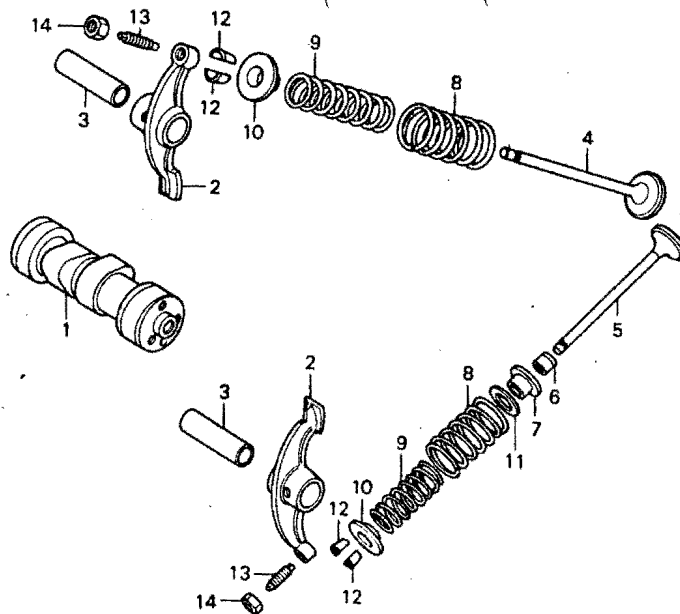
B130-1

Service item	F.R.T.	Ref. No.	Part No.	Description	Reqd. No. Z50J1	Serial No.	Area code
		18	90082-035-000	BOLT, HS, 6MM	2		
		19	90442-035-000	WASHER, SEALING, 6MM	3		
		20	90443-035-000	WASHER A, SEALING, 6MM	2		
		21	91302-001-020	O-RING, 30.8MM	2		
		22	91303-035-000	PACKING, RUBBER, 16MM	2		
		23	91305-028-158	O-RING, 9X1.6	2		
		24	91306-035-000	GASKET, RUBBER, 7.5MM	1		
		25	92000-06025	BOLT, HEX., 6X25	2		
		26	92000-06111	BOLT, HEX., 6x111	1		
		27	93500-06020	SCREW, PAN, 6X20	2		
		28	94001-06000	NUT, HEX., 6MM	1		
		29	94021-06000	NUT, CAP, 6MM	3		
		30	94301-08120	PIN A, DDWEL, 8X12	2		
		31	94301-08140	PIN A, DDWEL, 8X14	2		
		32	98056-56711	PLUG, SPARK (C-6H NGK)	1		
			98056-56721	PLUG, SPARK (U20FS ND)	1		

C 4

E-2

Camshaft • Valve



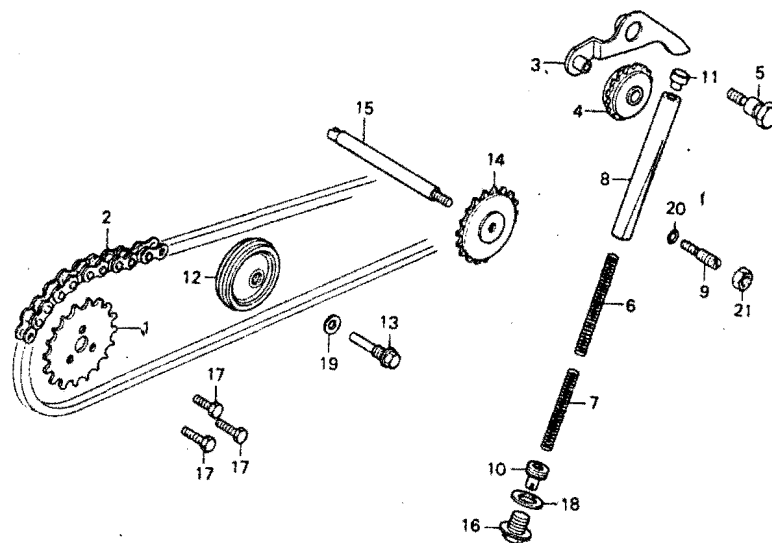
B130-2

Service item	F.R.T.	Ref. No.	Part No.	Description	Reqd. No. Z50J1	Serial No.	Area code
CAMSHAFT	0.8	1	14101-041-020	CAMSHAFT	1		
• VALVE ROCKET ARM ROCKER and its related parts		2	14431-035-000	ARM, VALVE ROCKER	2		
VALVE	1.2	3	14451-035-000	SHAFT, VALVE ROCKER ARM	2		
• add 0.2 Reaming Included		4	14711-036-000	VALVE, IN.	1		
VALVE SPRING and its related parts	1.0	5	14721-036-010	VALVE, EX.	1		
• add 0.1		6	14730-028-013	SEAL, VALVE STEM	1		
		7	14731-028-000	CAP, VALVE STEM SEAL	1		
		8	14751-035-600	SPRING, VALVE OUTER	2		
		9	14761-035-000	SPRING, VALVE INNER	2		
		10	14771-035-600	RETAINER, VALVE SPRING	2		
		11	14776-028-000	SEAT, VALVE SPRING INNER	1		
		12	14781-001-010	COTTER, VALVE	4		
		13	90012-200-000	SCREW, TAPPET ADJUSTING	2		
		14	90206-001-000	NUT, TAPPET ADJUSTING	2		



E-3

Cam chain · Tensioner



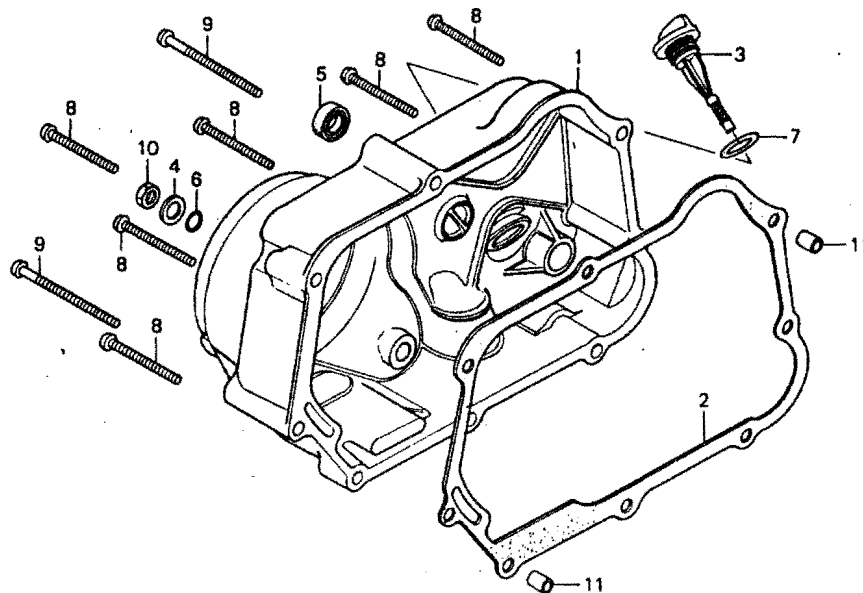
B130-3

Service item	F.R.T.	Ref. No.	Part No.	Description	Reqd. No. Z50J1	Serial No.	Area code
CAM SPROCKET	0.5	1	14321-035-010	SPROCKET, CAM (28T)	1		
CAM CHAIN	1.5	2	14401-035-003	CHAIN, CAM (32L DA100)	1		
CAM CHAIN TENSIONER		3	14500-035-010	ARM COMP., CAM CHAIN TENSIONER	1		
CAM CHAIN TENSIONER ROLLER	0.4	4	14502-086-000	ROLLER, CAM CHAIN TENSIONER	1		
CAM CHAIN TENSIONER PUSH ROD COMP. and its related parts	0.2	5	14531-035-000	PIVOT, CAM CHAIN TENSIONER	1		
CAM CHAIN GUIDE ROLLER	1.0	6	14541-086-010	SPRING A, CAM CHAIN TENSIONER	1		
CAM CHAIN GUIDE SPROCKET	1.1	7	14542-086-000	SPRING B, CAM CHAIN TENSIONER	1		
		8	14550-086-010	ROD COMP., CAM CHAIN TENSIONER	1		
		9	14561-086-010	BOLT, CAM CHAIN TENSIONER ADJUSTING	1		
		10	14562-086-000	BOLT B, CAM CHAIN TENSIONER ADJUSTING	1		
		11	14566-086-030	HEAD, CAM CHAIN TENSIONER PUSH ROD	1		
		12	14610-086-000	ROLLER COMP., CAM CHAIN GUIDE	1		
		13	14615-035-000	PIN, CAM CHAIN GUIDE ROLLER	1		
		14	14670-035-030	SPROCKET, CAM CHAIN GUIDE	1		
		15	14675-035-060	SPINDLE, CAM CHAIN GUIDE SPROCKET	1		
		16	90081-086-000	BOLT, SEALING, 14MM	1		
		17	90083-035-010	BOLT, KNOCK, 5MM	3		
		18	90441-035-000	WASHER, SEALING, 14MM	1		
		19	90481-035-000	WASHER, 8MM	1		
		20	91301-216-000	O-RING, 5.5X1.5	1		
		21	94002-08000-05	NUT, HEX., 8MM	1		



E-4

Right crankcase cover



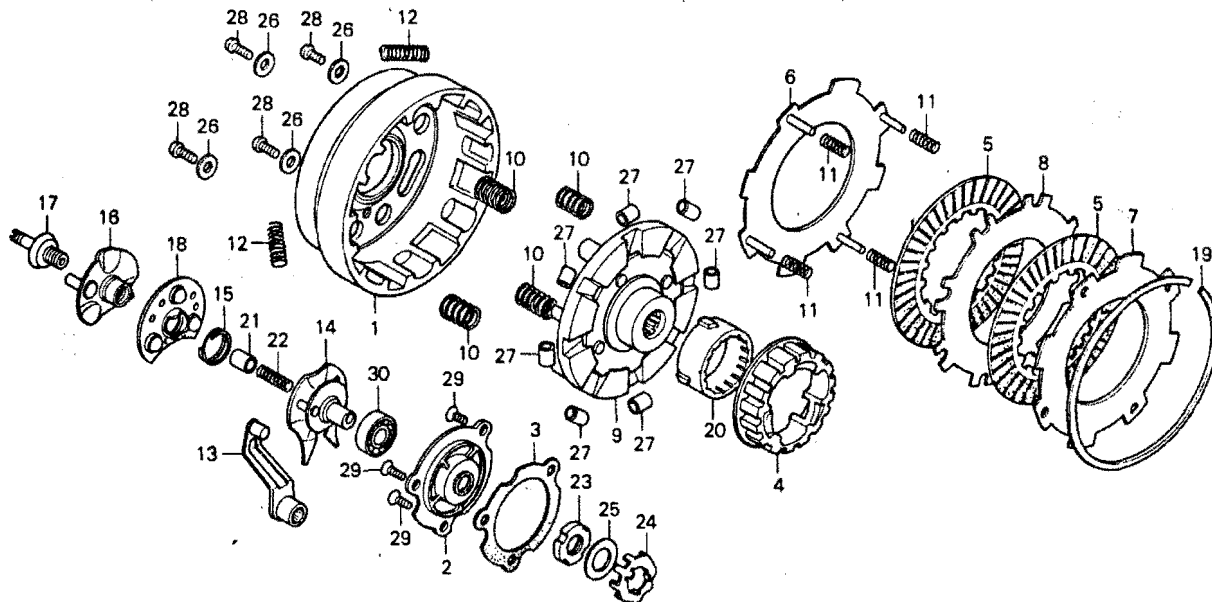
B130-4

Service item	F.R.T.	Ref. No.	Part No.	Description	Reqd. No. Z50J1	Serial No.	Area code
RIGHT CRANKCASE COVER COMP.	0.7	1	11330-045-010	COVER COMP., R. CRANKCASE	1		
RIGHT CRANKCASE COVER GASKET	0.5	2	11394-035-010	GASKET, F. CRANKCASE COVER	1		
OIL LEVEL GAUGE	0.1	3	15650-098-730	GAUGE, OIL LEVEL	1		
14X24X5 OIL SEAL	0.6	4	90485-040-000	WASHER, 8MM	1		
		5	91202-216-003	OIL SEAL, 14X24X5	1		
		6	91303-001-000	O-RING, 8MM	1		
		7	91307-035-000	O-RING, 18X3	1		
		8	93500-06040	SCREW, PAN, 6X40	6		
		9	93500-06065	SCREW, PAN, 6X65	2		
		10	94030-08000	NUT, HEX., 8MM	1		
		11	94301-08120	PIN A, DWEL, 8X12	2		

C 7

E-5

Clutch



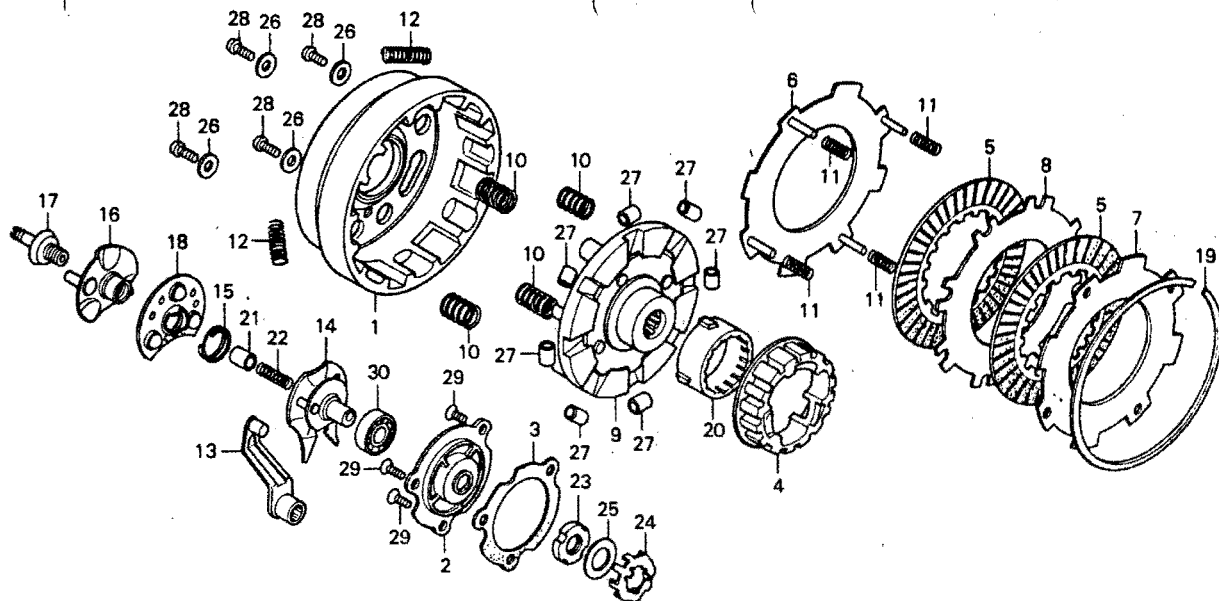
B130-5

Service item	F.R.T.	Ref. No.	Part No.	Description	Reqd. No. Z50J1	Serial No.	Area code
CLUTCH OUTER/CLUTCH PLATE and its related parts	0.8	1	22101-040-030	OUTER, CLUTCH	1		
		2	22111-040-000	COVER, CLUTCH OUTER	1		
CLUTCH OUTER COVER and its related parts	0.6	3	22119-040-000	GASKET, CLUTCH OUTER COVER	1		
		4	22120-040-030	CENTER, CLUTCH (17T)	1		
●CLUTCH LIFTER PLATE and its related parts		5	22201-040-000	DISK, CLUTCH FRICTION	2		
		6	22310-041-010	PLATE A, CLUTCH	1		
		7	22321-041-000	PLATE B, CLUTCH	1		
		8	22331-041-000	PLATE C, CLUTCH	1		
		9	22351-120-690	PLATE, DRIVE	1	1187380	DK, DM, G, SA, U
			22351-120-691	PLATE COMP., DRIVE	1	1187381	F DK, DM, G, SA, U
		10	22401-040-010	SPRING, CLUTCH	4		
		11	22411-041-000	SPRING, CLUTCH FREE	4		
		12	22421-040-000	SPRING, CLUTCH DAMPER	4		
		13	22811-040-020	LEVER, CLUTCH	1		
		14	22820-918-000	PLATE COMP., CLUTCH CAM	1		
		15	22825-046-000	SPRING, CAM PLATE SIDE	1		
		16	22830-041-000	PLATE COMP., CLUTCH LIFTER	1		
		17	22846-040-010	BOLT, CLUTCH ADJUSTING	1		
		18	22860-041-000	RETAINER, CLUTCH BALL	1		DK, DM, F, G, U
			22860-046-000	RETAINER, CLUTCH BALL	1		
		19	22901-001-000	SET RING, 101.5MM	1		
		20	23112-041-040	OUTER, DRIVE GEAR (18T)	1		
		21	25551-918-007	THROUGH, OIL	1		
		22	25555-065-000	SPRING, OIL THROUGH	1		
		23	90231-087-000	NUT, LOCK, 14MM	1		

C 8

E-5

Clutch



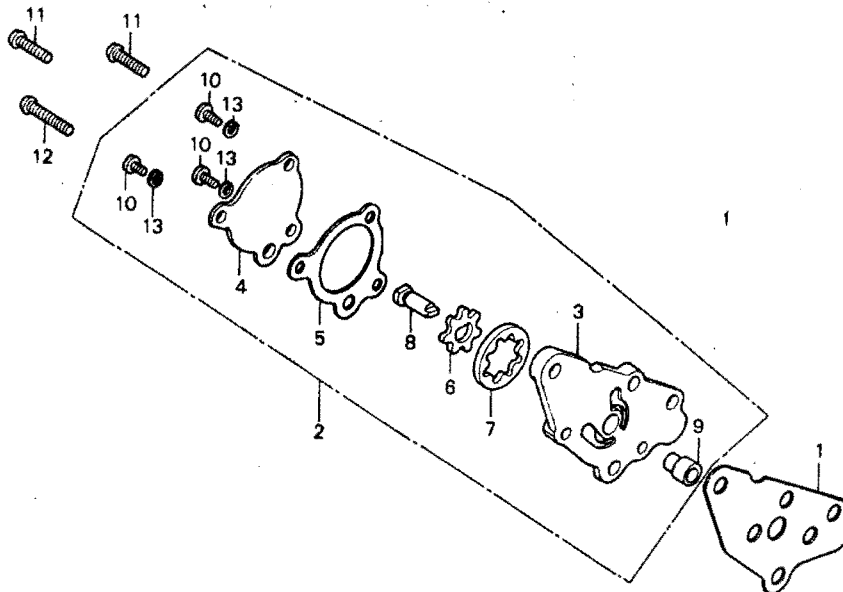
B130-5

Service item	F.R.T.	Ref. No.	Part No.	Description	Reqd. No. Z50J1	Serial No.	Area code
		24	90431-086-000	WASHER, LOCK, 14MM	1		
		25	90432-086-000	WASHER B, LOCK	1		
		26	90483-041-000	WASHER, STOPPER	4		
		27	91102-041-000	ROLLER, 8X10	8		
			91102-041-007	ROLLER, 8X10	8		
			91102-041-153	ROLLER, 8X10	8		
		28	93500-05010-0A	SCREW, PAN, 5X10	4		
		29	93600-05010-0A	SCREW, FLAT, 5X10	3		
		30	96100-60000	BEARING, RADIAL BALL, 6000	1		



E-6

Oil pump



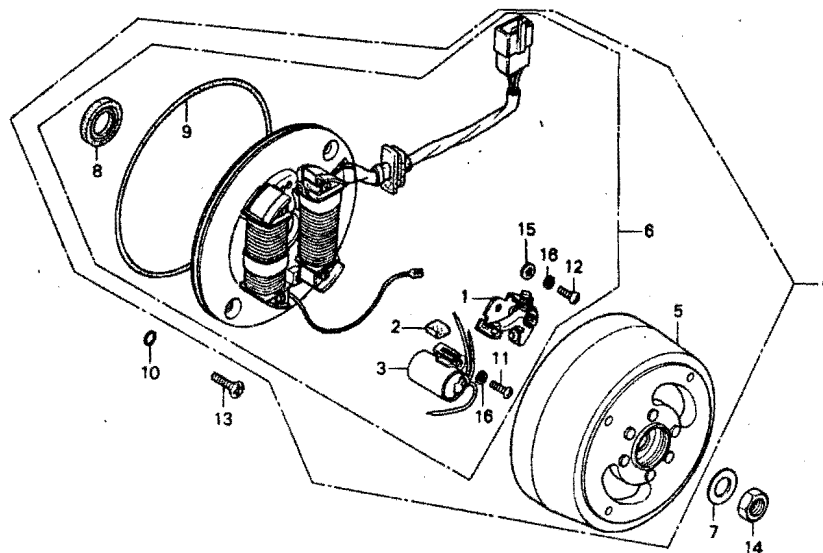
B130-6

Service item	F.R.T.	Ref. No.	Part No.	Description	Reqd. No. Z50J1	Serial No.	Area code
OIL PUMP/OIL PUMP BODY and those related parts	0.7	1	15119-035-020	GASKET, OIL PUMP BODY	1		
		2	15300-035-000	PUMP ASSY., OIL	1		
		3	15311-035-013	BODY, OIL PUMP	1		
		4	15321-035-003	COVER, OIL PUMP	1		
		5	15329-035-003	GASKET, OIL PUMP COVER	1		
		6	15331-035-004	ROTOR, OIL PUMP INNER	1		
		7	15332-035-004	ROTOR, OIL PUMP OUTER	1		
		8	15382-035-003	DRIVESHAFT, OIL PUMP	1		
		9	15383-035-000	PIN, OIL PUMP KNUCK	1		
		10	93500-05010-0A	SCREW, PAN, 5x10	3		
		11	93500-06016	SCREW, PAN, 6x16	2		
		12	93500-06022	SCREW, PAN, 6x22	1		
		13	94111-05000	WASHER, SPRING, 5MM	3		

C 10

E-7

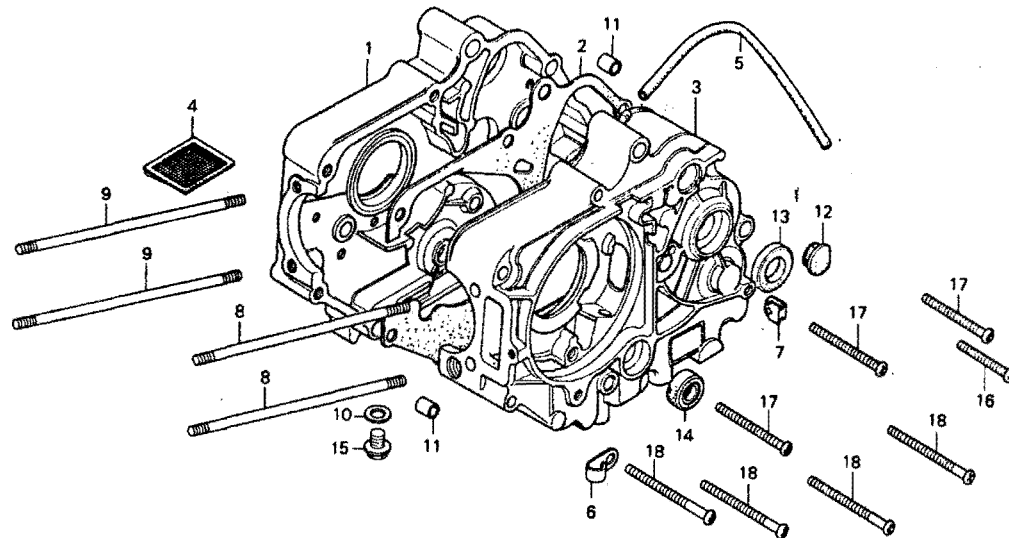
Generator



B130-7

Service item	F.R.T.	Ref. No.	Part No.	Description	Reqd. No. Z50J1	Serial No.	Area code
A.C.GENERATOR ASSY.	0.4	1	30202-041-015	BREAKER, CONTACT (HITACHI)	1		
•STATOR/18.9X30X5 OIL SEAL		2	30205-041-005	FELT, OIL (HITACHI)	1		
•CONTACT BREAKER/CONDENSER		3	30250-035-005	CONDENSER COMP.	1		F,G
•add 0.1		4	30250-041-005	CONDENSER COMP. (HITACHI)	1		Dk, DM, SA, U
FLYWHEEL COMP.	0.2	4	31100-120-770	GENERATOR ASSY., A.C.	1		Dk, DM, SA, U
		5	31100-130-672	GENERATOR ASSY., A.C.	1		F,G
		5	31121-098-015	FLYWHEEL COMP.	1		
		6	31141-120-760	STATOR ASSY.	1		Dk, DM, SA, U
			31141-130-671	STATOR COMP.	1		F,G
		7	90426-035-000	WASHER, MAGNETO FIXING	1		
		8	91202-035-003	OIL SEAL, 18.9X30X5	1		
			91202-035-005	OIL SEAL, 18.9X30X5	1		
		9	91301-035-000	O-RING, 107X2	1		
		10	91317-703-000	O-RING, 6X1.7	2		
		11	93500-04008-0A	SCREW, PAN, 4X8	1		
		12	93500-04010-0A	SCREW, PAN, 4X10	1		
		13	93600-06616	SCREW, FLAT, 6X16	2		
		14	94030-10000	NUT, HEX., 10MM	1		
		15	94101-04000	WASHER, PLAIN, 4MM	1		
		16	94111-04000	WASHER, SPRING, 4MM	2		

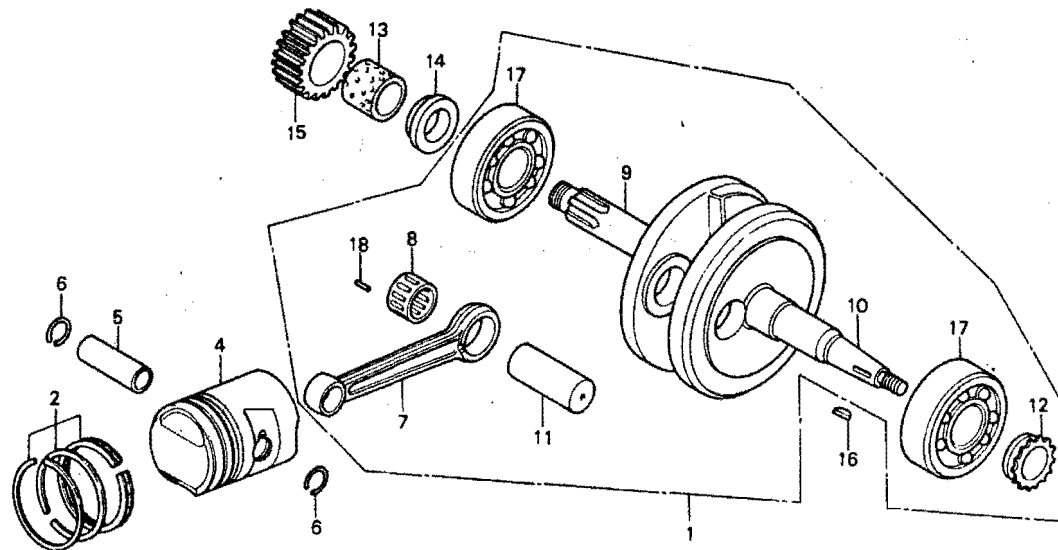
Crankcase



B130-8

Service item	F.R.T.	Ref. No.	Part No.	Description	Reqd. No. Z50J1	Serial No.	Area code
R.CRANKCASE COMP.	☆3.3	1	11100-045-010	CRANKCASE COMP., R.	1	1143238	OK, DM, F, G, U
CRANKCASE GASKET	☆2.8		11100-087-900	CRANKCASE COMP., R.	1	1143239	OK, DM, F, G, U SA
L.CRANKCASE COMP.	☆3.9	2	11191-045-000	GASKET, CRANKCASE	1		
OIL FILTER SCREEN	0.5	3	11200-120-000	CRANKCASE COMP., L.	1	1143238	OK, DM, F, G, U
CYLINDER STUD BOLT	1.1		11200-120-010	CRANKCASE COMP., L.	1	1143239	OK, DM, F, G, U SA
•add 0.1					1		
17X29X5 OIL SEAL	☆3.0	4	15421-035-010	SCREEN, OIL FILTER	1		
11.6X24X10 OIL SEAL	0.9	5	15761-045-000	PIPE, BREATHER	1		
		6	16236-045-010	CLAMPER, OVER FLOW PIPE	1		
		7	32981-035-000	STOPMET, NEUTRAL SWITCH CURD	1		
		8	90031-035-010	BOLT A, CYLINDER STUD	2		
		9	90032-035-000	BOLT B, CYLINDER STUD	2		
		10	90407-259-000	PACKING, DRAIN CRK	1		
		11	90704-035-000	PIN A, KNOCK, 10X14	2		
		12	90801-035-000	PLUG, RUBBER, 19MM	1		
		13	91203-035-005	OIL SEAL, 17X29X5	1		
		14	91204-121-000	OIL SEAL, 11.6X24X10	1		
			91204-121-005	OIL SEAL, 11.6X24X10	1		
		15	92800-12000	BULT, DRAIN PLUG, 12M4	1		
		16	93500-06050	SCREW, PAN, 6X50	1		
		17	93500-06060	SCREW, PAN, 6X60	3		
		18	93500-06065	SCREW, PAN, 6X65	4		

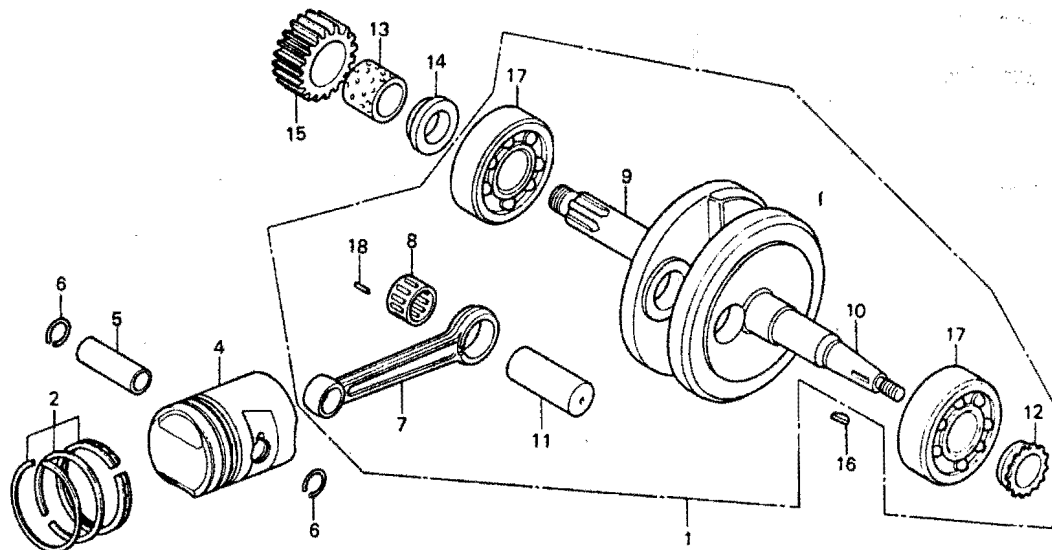
Crankshaft • Piston



B130-9

Service item	F.R.T.	Ref. No.	Part No.	Description	Reqd. No. Z50J1	Serial No.	Area code
CONNECTING ROD and its related parts	★	1	13000-041-030	CRANKSHAFT COMP.	1		
★ Actually required time		2	13010-036-000	RING SET, PISTON (STD.)	1		
CRANKSHAFT ASSY.	★3.3		13020-036-000	RING SET, PISTON (0.25)	(1)		
PISTON/PISTON RING SET	1.2		13030-036-000	RING SET, PISTON (0.50)	(1)		
PISTON PIN	1.0		13040-036-000	RING SET, PISTON (0.75)	(1)		
PRIMARY DRIVE GEAR	0.7		13050-036-000	RING SET, PISTON (1.00)	(1)		
		4	13101-036-010	PISTON (STD.)	1		
			13102-036-010	PISTON (0.25)	(1)		
			13103-036-010	PISTON (0.50)	(1)		
			13104-036-010	PISTON (0.75)	(1)		
			13105-036-010	PISTON (1.00)	(1)		
		5	13111-036-000	PIN, PISTON	1		
		6	13115-001-000	CLIP, PISTON PIN	2		
		7	13201-036-000	ROD, CONNECTING	1		DK, DM, F, G, U
			13201-036-010	ROD, CONNECTING	1		
		8	13211-035-000	RETAINER, CONNECTING ROD	1		
		9	13310-035-050	CRANKSHAFT COMP., R.	1	1143238	DK, DM, F, G, U
			13311-035-050	CRANKSHAFT COMP., L.	1	1143239	DK, DM, F, G, U
		10	13321-041-020	CRANKSHAFT, L.	1		SA
		11	13381-035-010	PIN, CRANK	1		
		12	14311-035-000	SPROCKET, TIMING (14T)	1		
		13	22131-035-020	GUIDE, CLUTCH CENTER	1		
		14	22911-035-010	COLLAR, 17MM	1		
		15	23120-041-000	GEAR, PRIMARY DRIVE (18T)	1		
		16	90741-035-000	KEY, WOODRUFF, 3X5	1		

Crankshaft · Piston



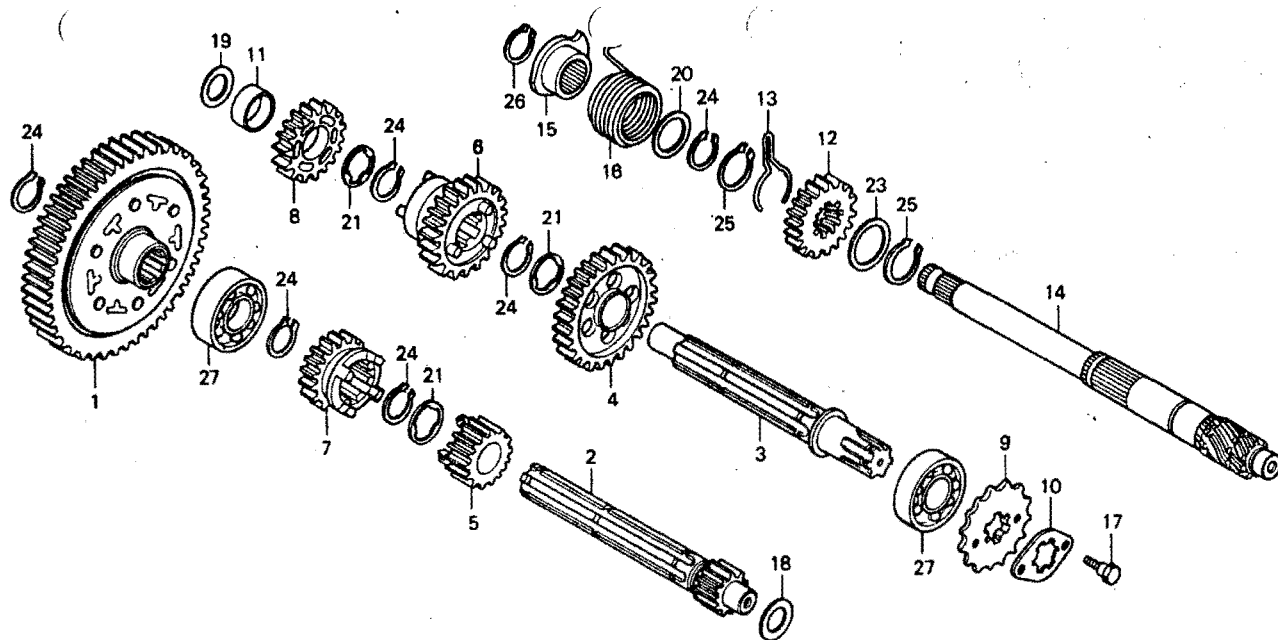
B130-9

Service item	F.R.T.	Ref. No.	Part No.	Description	Reqd. No. Z50J1	Serial No.	Area code
		17	91001-035-000	BEARING, RADIAL BALL, 6304	2	1143239	DK, DM, F, G, U
			91001-035-008	BEARING, RADIAL BALL, 6304 (TOYO)	2	1143239	SA DK, DM, F, G, U
			96100-63040	BEARING, RADIAL BALL, 6304	2		SA
		18	91101-001-U30	ROLLER, ROD, 2.5X10	22		

C 14

E-10

Transmission • Kick starter



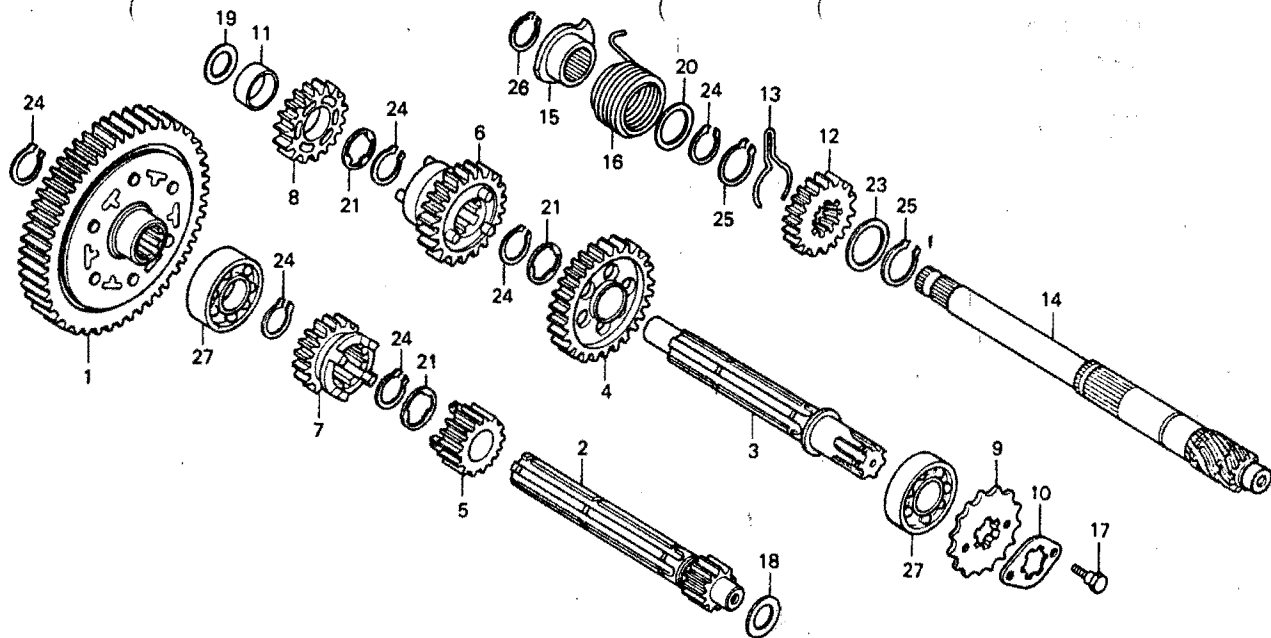
B130-10

Service item	F.R.T.	Ref. No.	Part No.	Description	Reqd. No. Z50J1	Serial No.	Area code
PRIMARY DRIVEN GEAR	0.7	1	23110-098-740	GEAR, PRIMARY DRIVEN (67T)	1		
●KICK STARTER SPRING		2	23211-041-020	MAINSHAFT, TRANSMISSION (11T)	1		
TRANSMISSION MAIN SHAFT	☆3.0	3	23221-041-040	COUNTERSHAFT, TRANSMISSION	1		
and its related parts		4	23421-076-000	GEAR, COUNTERSHAFT LOW (35T)	1		
●TRANSMISSION COUNTER SHAFT		5	23431-041-040	GEAR, MAINSHAFT SECOND (17T)	1		
and its related parts		6	23441-041-060	GEAR, COUNTERSHAFT SECOND (31T)	1		
•One motorcycle 3.2		7	23471-041-040	GEAR, MAINSHAFT TOP (21T)	1		
DRIVE SPROCKET	0.2	8	23481-041-020	GEAR, COUNTERSHAFT TOP (25T)	1		
KICK STARTER PINION/SPINDLE	☆2.9	9	23800-045-671	SPROCKET, DRIVE (12T)	1		
and those related parts		10	23802-045-670	PLATE, DRIVE SPROCKET FIXING	1		
		11	23911-041-010	COLLAR, GEAR	1		
		12	28211-040-035	PINION, KICK STARTER (22T)	1		
		13	28223-035-035	SPRING, KICK STARTER RATCHET	1		
		14	28251-035-065	SPINDLE, KICK STARTER	1		
		15	28262-041-730	RETAINER, KICK SPRING	1		
		16	28281-035-018	SPRING, KICK STARTER	1		
		17	90084-041-000	BOLT, DRIVE SPROCKET FIXING	2		
		18	90451-001-000	WASHER, THRUST, 14MM	1	1143239	DK, DM, F, G, U
			90451-121-000	WASHER, THRUST, 14MM	1		DK, DM, F, G, U
					1		SA
		19	90451-035-000	WASHER, THRUST, 13.5MM	1	1143238	DK, DM, F, G, U
			90451-141-000	WASHER, THRUST, 13.5MM	1		DK, DM, F, G, U
					1		SA
		20	90451-040-000	WASHER, THRUST, 17MM	1		
		21	90461-035-000	WASHER, SPLINE, 17MM	3		

C 15

E-10

Transmission • Kick starter



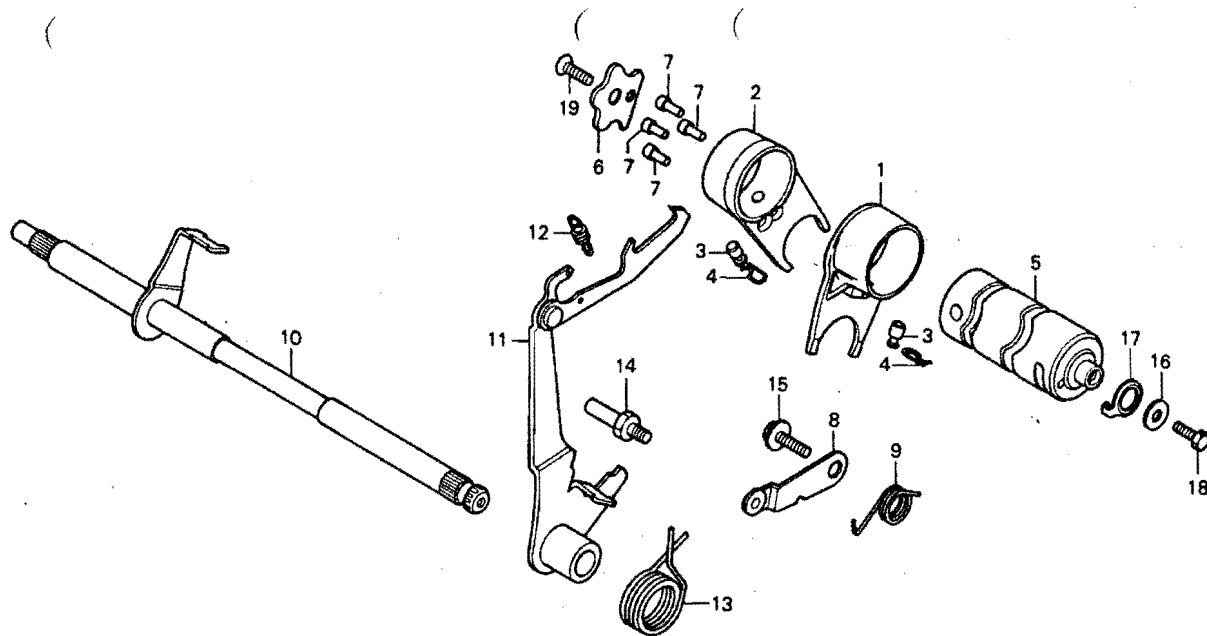
B130-10

Service item	F.R.T.	Ref. No.	Part No.	Description	Reqd. No. Z50J1	Serial No.	Area code
		23	90482-035-025	WASHER, 20MM	1		
		24	90601-001-000	CIR CLIP, EXTERNAL, 17MM	6		
		25	90605-200-000	SET RING, 20MM	2		
		26	94510-16000	CIR CLIP, EXTERNAL, 16	1		
		27	96100-62030	BEARING, RADIAL BALL, 6203	2		

C 16

E-11

Gearshift drum



B130-11

Service item	F.R.T.	Ref. No.	Part No.	Description	Reqd. No. Z50J1	Serial No.	Area code
GEAR SHIFT FORK/DRUM and those related parts	☆3.0	1	24211-087-000	FORK, L. GEARSHIFT	1		
		2	24221-041-000	FORK, R. GEARSHIFT	1		
		3	24261-028-010	PIN, GEARSHIFT FORK GUIDE	2		
GEAR SHIFT SPINDLE/SHIFT DRUM STOPPER and those related parts	0.8	4	24263-028-000	CLIP, GEARSHIFT FORK GUIDE PIN	2		
		5	24301-045-670	DRUM, GEARSHIFT	1		
		6	24411-041-020	PLATE, SHIFT DRUM STOPPER	1	1180880	DK, DM, G, SA, U
					1	6323403	F
			24411-041-030	PLATE, SHIFT DRUM STOPPER	1	1180881	DK, DM, G, SA, U
					1	6323404	F
		7	24421-041-000	PIN, GEARSHIFT DRUM	4		
		8	24430-041-000	STOPPER, SHIFT DRUM	1		DK, DM, F, G, U
			24430-041-010	STOPPER, SHIFT DRUM	1		
		9	24435-040-000	SPRING, SHIFT DRUM STOPPER	1		
		10	24610-09E-730	SPINDLE COMP., GEARSHIFT	1		
		11	24630-086-000	ARM, GEARSHIFT	1		
		12	24641-041-000	SPRING, GEARSHIFT ARM	1		
		13	24651-041-000	SPRING, GEARSHIFT RETURN	1		
		14	24652-035-000	PIN, SHIFT RETURN SPRING	1		
		15	90023-041-000	BOLT, SHIFT DRUM STOPPER ARM PIVOT	1		
		16	90417-041-000	WASHER, SHIFT DRUM SLIDE	1		
		17	90484-045-010	WASHER, 13.2MM	1		
		18	92000-06016	BOLT, HEX., 6X16	1	1180880	DK, DM, G, SA, U
					1	6323403	F
					2	1180881	DK, DM, G, SA, U
					2	6323404	F
		19	93700-06020	SCREW, OVAL, 6X20	1	1180880	DK, DM, G, SA, U
					1	6323403	F

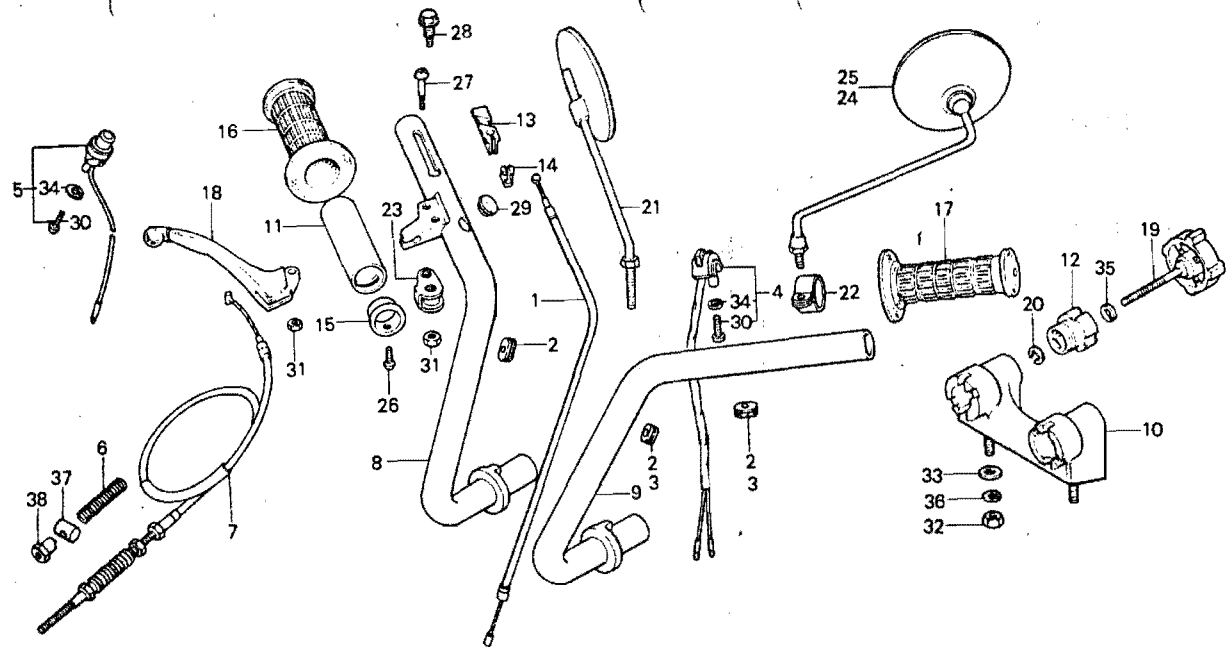
1979.09.10

C16

D 2

F-1

Handle pipe • Switch • Cable



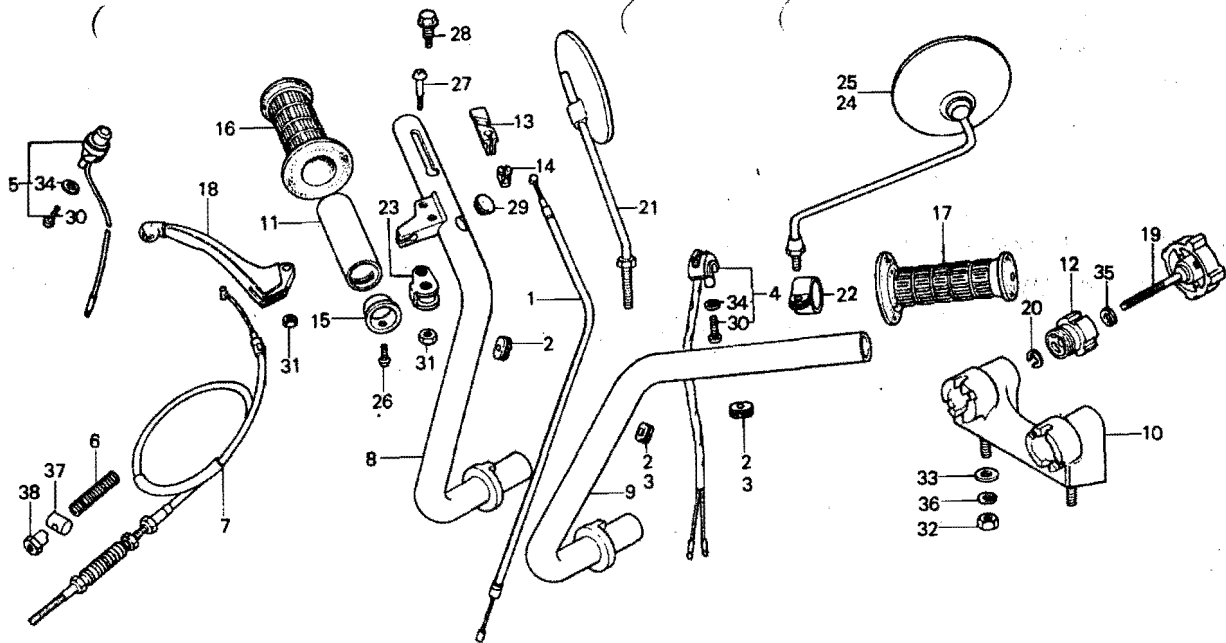
B130-50A

Service item	F.R.T.	Ref. No.	Part No.	Description	Reqd. No. Z50J1	Serial No.	Area code
THROTTLE CABLE COMP.	0.4	1	17910-130-640	CABLE COMP., THROTTLE	1		
TURN SIGNAL & HORN SWITCH ASSY.	0.2	2	17911-023-000	GROMMET, THROTTLE CABLE	3	1159146	DK, DM, F, G, U
FRONT BRAKE CABLE	0.1				1		
•GRIP RUBBER		3	32983-126-000	GROMMET, SWITCH CORD	2	1159147	DK, DM, F, G, U
•HANDLE LEVER					2		SA
•HANDLE HOLDER KNOB and its related parts		4	35200-130-621	SWITCH ASSY., DIMMER	1		F
•BACK MIRROR		5	35200-130-640	SWITCH ASSY., WINKER HORN	1		DK, DM, SA, U
•One or all					1		F
R. STEERING HANDLE PIPE	0.4	6	45437-001-000	SPRING, FR. BRAKE ARM	1		
L. STEERING HANDLE PIPE	0.3	7	45450-130-640	CABLE, FR. BRAKE	1		
•STEERING HANDLE HOLDER		8	53110-130-690	PIPE, P. STEERING HANDLE	1		
THROTTLE GRIP PIPE and its related parts	0.2	9	53120-130-690	PIPE, L. STEERING HANDLE	1		
		10	53131-130-670	HOLDER, STEERING HANDLE	1		
		11	53141-098-000	PIPE, THROTTLE GRIP	1		
		12	53143-045-000	NUT, HANDLE HOLDER	2		
		13	53161-044-000	HINGE, THROTTLE CABLE	1		
		14	53162-098-000	HOLDER, THROTTLE CABLE OUTER	1		
		15	53163-044-010	STOPPER, THROTTLE GRIP	1		
		16	53165-120-000	RUBBER, R. GRIP	1		
		17	53166-120-000	RUBBER, L. GRIP	1		
		18	53175-045-670	LEVER, R. STEERING HANDLE	1		
		19	53741-120-000	KNOB, HANDLE HOLDER	2		
		20	53746-045-010	WING, KNOB STOPPER	2		
		21	88100-063-000	MIRROR, F. BACK	1	1151313	DK, DM
					1		SA

D 3

F-1

Handle pipe · Switch · Cable



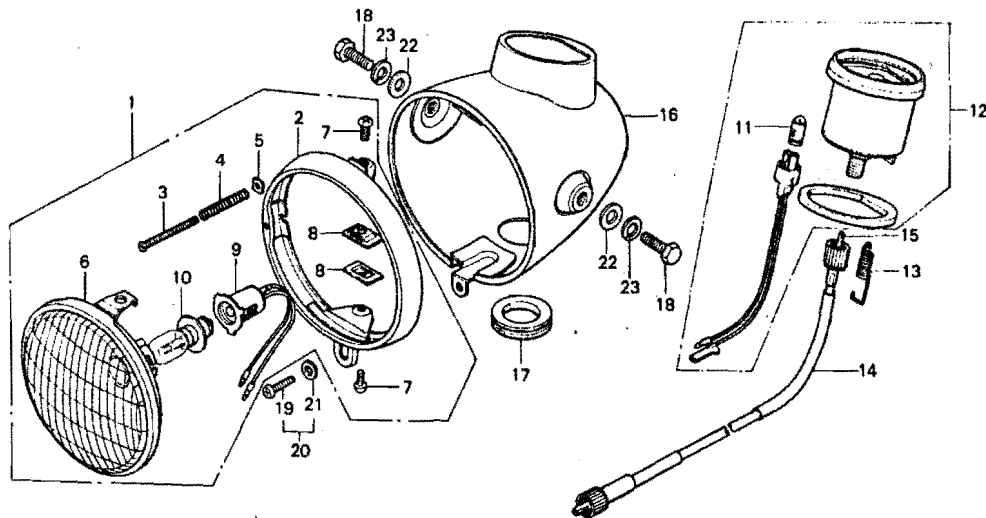
B130-50A

Service item	F.R.T.	Ref. No.	Part No.	Description	Reqd. No. Z50J1	Serial No.	Area code
			88100-369-650	MIRROR, R. BACK	1		U
			88110-063-010	MIRROR, R. BACK	1	1151314	DK, DP
		22	88102-130-000	STAY, L. BACK MIRROR	1		F, G
		23	88105-130-650	STAY, R. BACK MIRROR	1		U
		24	88120-028-670	MIRROR, L. BACK	1		G
		25	88120-324-621	MIRROR, L. BACK	1		F
		26	90101-063-000	SCREW, THROTTLE GRIP SET	1		
		27	90114-063-000	BOLT, HANDLE LEVER PIVOT	1		
		28	90115-130-650	BOLT, BACK MIRROR	1		U
		29	90612-130-690	PLUG, HANDLE HOLE	1		DK, DM, F, SA, U
		30	93500-03012-0A	SCREW, PAN, 3X12	2		G
					1		DK, DM, SA, U
					2		F
		31	94001-05000-05	NUT, HEX., 5MM	1		DK, DM, F, G, SA
					2		U
		32	94030-10000	NUT, HEX., 10MM	2		
		33	94101-10000	WASHER, PLAIN, 10MM	2		
		34	94111-03000	WASHER, SPRING, 3MM	1		DK, DM, SA, U
					2		F
		35	94111-08000	WASHER, SPRING, 8MM	2		
		36	94111-10000	WASHER, SPRING, 10MM	2		
		37	95015-31000	JOINT A, BRAKE ARM	1	1112473	DK, DM, F, G, U
			95015-32001	JOINT B, BRAKE ARM	1	1112474	DK, DM, F, G, U
					1		SA
		38	95015-41000	NUT A, BRAKE ROD ADJUST	1	1112473	DK, DP, F, G, U
			95015-42000	NUT B, BRAKE ROD ADJUST	1	1112474	DK, DM, F, G, U
					1		SA

D 4

F-2

**Headlight · Speedometer
(DK, DM, SA, U)**



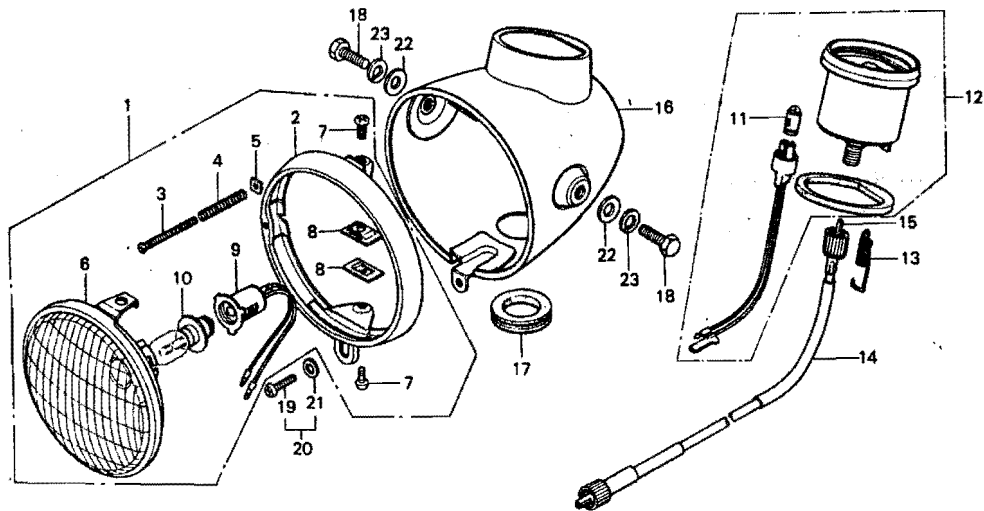
B130-13

Service item	F.R.T.	Ref. No.	Part No.	Description	Reqd. No. Z50J1	Serial No.	Area code
HEADLIGHT ASSY. & BULB	0.1	1	33100-045-003	HEADLIGHT ASSY.	1		DK, DM, SA, U
● HEAD LIGHT SOCKET		2	33101-045-003	RIM, HEADLIGHT	1		DK, DM, SA, U
HEADLIGHT UNIT and its related parts	0.2	3	33102-001-003	SCREW, HEADLIGHT BEAM ADJUSTING (STANLEY)	1		DK, DM, SA, U
● SPEEDOMETER ASSY.		4	33107-001-003	SPRING, HEADLIGHT BEAM ADJUSTING (STANLEY)	1		DK, DK, SA, U
● SPEEDOMETER CABLE		5	33117-001-003	NUT, HEADLIGHT BEAM ADJUSTING (STANLEY)	1		DK, DM, SA, U
HEADLIGHT CASE	0.3	6	33120-045-003	HEADLIGHT UNIT	1		DK, DM, SA, U
		7	33125-200-030	SCREW, UNIT HOLDER	2		DK, DM, SA, U
		8	33128-292-670	NUT, UNIT HOLDER	2		DK, DM, SA, U
		9	33130-045-003	SOCKET, HEADLIGHT	1		DK, DM, SA, U
		10	34901-045-003	BULB, HEADLIGHT	1		DK, DM, SA, U
		11	34908-001-000	BULB, SPEEDOMETER (6V1.5W)	1		DK, DM, SA, U
		12	37200-130-651	SPEEDOMETER ASSY.	1		DK, SA, U
			37200-130-681	SPEEDOMETER ASSY.	1		DM
		13	37244-045-010	SPRING, SPEEDOMETER SET	1		DK, DM, SA, U
		14	44830-130-640	CABLE COMP., SPEEDOMETER	1		DK, DM, U
			44830-130-641	CABLE ASSY., SPEEDOMETER	1	1149989	DK, DM, U
					1		SA
		15	44831-130-640	CABLE, SPEEDOMETER INNER	1		1149988 DK, DM, U
			44831-130-641	CABLE, INNER	1	1149989	DK, DM, U
					1		SA
		16	61301-045-6003	CASE, HEADLIGHT	1		DK, DM, SA, U
		17	61302-268-020	GROMMET, 25MM	1		DK, DM, SA, U
		18	92000-08016-06	BOLT, HEX., 8X16	2		1140000 DK, DM, U

D 5

F-2

**Headlight · Speedometer
(DK, DM, SA, U)**



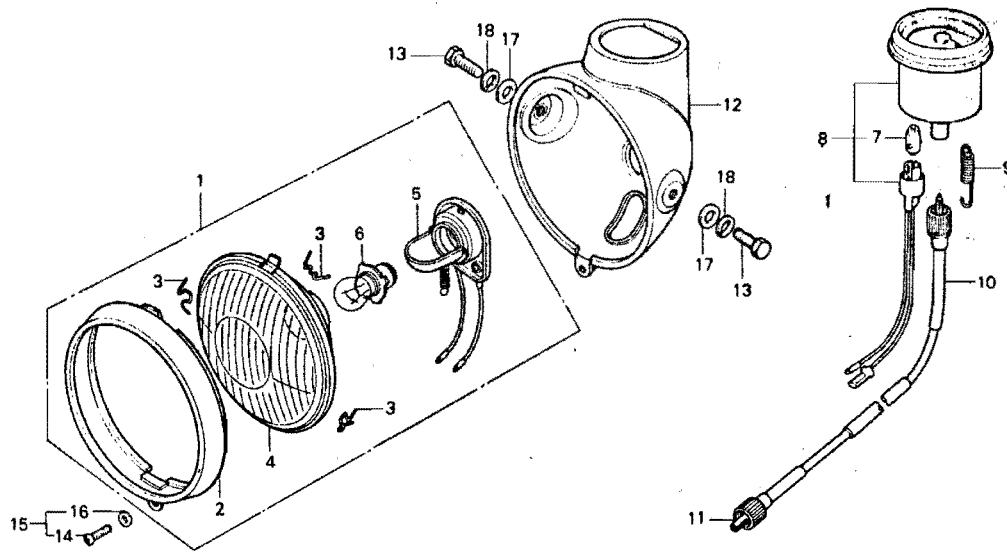
B130-13

Service item	F.R.T.	Ref. No.	Part No.	Description	Reqd. No. Z50J1	Serial No.	Area code
			92000-08020-08	BDLT, HEX., dx20	2	1140001	DK, DM, U
					2		SA
		19	93500-05012-DA	SCREW, PAN, 5X12	1	1140000	DK, DM, U
		20	93891-05012-00	SCREW-WASHER, 5X12	1	1140001	DK, DM, U
					1		SA
		21	94101-05000	WASHER, PLAIN, 5MM	1	1140000	DK, DM, U
		22	94101-08000	WASHER, PLAIN, 8MM	2		DK, DM, SA, U
		23	94111-08000	WASHER, SPRING, 8MM	2		DK, DM, SA, U

D 6

F-2-1

Headlight Speedometer (G)



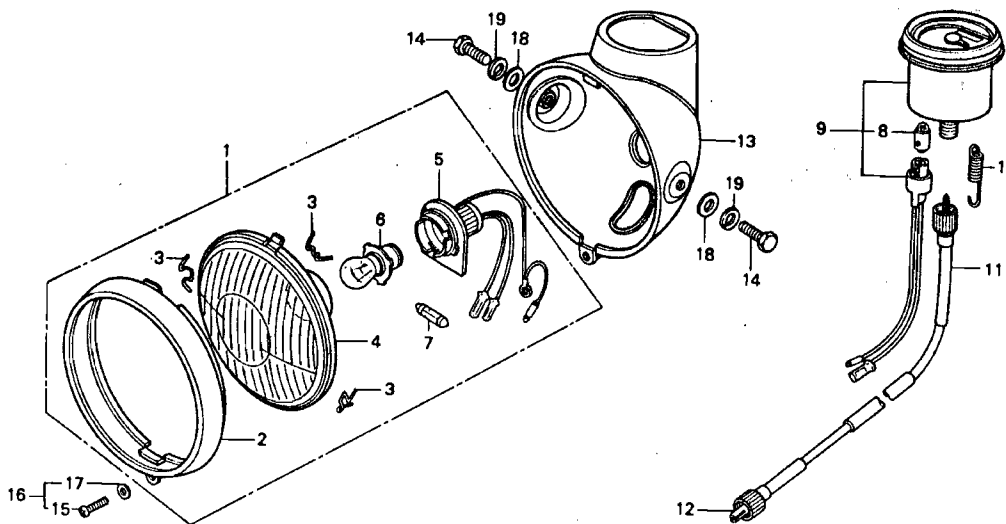
B130-51

Service item	F.R.T.	Ref. No.	Part No.	Description	Reqd. No. Z50J1	Serial No.	Area code
HEADLIGHT ASSY. & BULB	0.1	1	33100-130-611	HEADLIGHT ASSY. (6V 15W)	1		G
●HEAD LIGHT SOCKET		2	33101-130-611	RIM, HEADLIGHT	1		G
HEADLIGHT UNIT and its related parts	0.2	3	33115-050-910	SPRING, HEADLIGHT UNIT SETTING	3		G
●SPEEDOMETER ASSY.		4	33120-130-611	HEADLIGHT UNIT	1		G
●SPEEDOMETER CABLE		5	33130-130-611	SOCKET COMP., HEADLIGHT	1		G
HEADLIGHT CASE	0.3	6	34901-130-611	BULB, HEADLIGHT (LOCAL PURCHASE)	1		G
		7	34908-001-000	BULB, SPEEDOMETER (6V1.5W)	1		G
		8	37200-130-611	SPEEDOMETER ASSY. (KM)	1		G
		9	37244-045-010	SPRING, SPEEDOMETER SET	1		G
		10	44830-130-610	CABLE COMP., SPEEDOMETER	1		G
		11	44831-130-610	CABLE, SPEEDOMETER INNER	1		G
		12	61301-045-7350	CASE, HEADLIGHT	1		G
		13	92000-08016-00	BOLT, HEX., 8X16	2	1140001	G
			92000-08020-00	BOLT, HEX., 8X20	2	1140001	G
		14	93500-05012-00	SCREW, PAN, 5X12	1	1140001	G
		15	93891-05012-00	SCREW-WASHER, 5X12	1	1140001	G
		16	94101-05000	WASHER, PLAIN, 5MM	1	1140000	G
		17	94101-08000	WASHER, PLAIN, 8MM	2		G
		18	94111-08000	WASHER, SPRING, 8MM	2		G

D 7

F-2-2

Headlight • Speedometer (F)



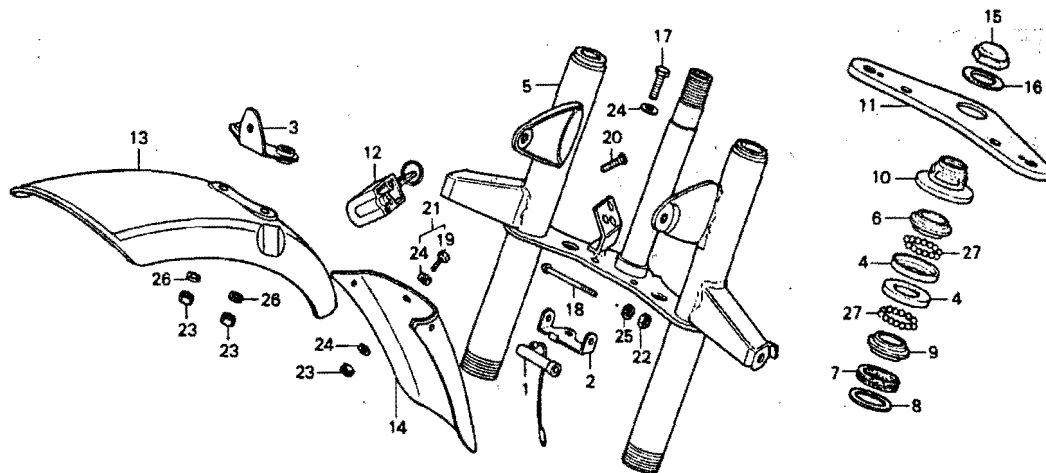
B130-52

Service item	F.R.T.	Ref. No.	Part No.	Description	Reqd. No. Z50J1	Serial No.	Area code
HEADLIGHT ASSY. & BULB	0.1	1	33100-045-620	HEADLIGHT ASSY. (6V25/25W-4W) (STANLEY)	1		F
●HEAD LIGHT SOCKET		2	33101-230-621	RIM, HEADLIGHT	1		F
HEADLIGHT UNIT and its related parts	0.2	3	33108-051-000	SPRING, HEADLIGHT UNIT SETTING	3		F
●SPEEDOMETER ASSY.		4	33120-230-621	HEADLIGHT UNIT	1		F
●SPEEDOMETER CABLE		5	33130-045-620	SOCKET COMP., HEADLIGHT	1		F
HEADLIGHT CASE	0.3	6	34901-351-621	BULB, HEADLIGHT (LOCAL PROCUREMENT PART)	1		F
		7	34903-382-621	BULB, POSITION (6V4W) (LOCAL PROCUREMENT PART)	1		F
		8	34908-001-000	BULB, SPEEDOMETER (6V1.5W)	1		F
		9	37200-130-651	SPEEDOMETER ASSY.	1		F
		10	37244-045-010	SPRING, SPEEDOMETER SET	1		F
		11	44830-130-610	CABLE COMP., SPEEDOMETER	1		F
		12	44831-130-610	CABLE, SPEEDOMETER INNER	1		F
		13	61301-045-7358	CASE, HEADLIGHT	1		F
		14	92000-08016-08	BOLT, HEX., 8X16	2	1140001	F
		15	92000-08020-08	BOLT, HEX., 8X20	2	1140001	F
		16	93500-05012-0A	SCREW, PAN, 5X12	1	1140001	F
		17	93891-05012-00	SCREW-WASHER, 5X12	1	1140001	F
		18	94101-05000	WASHER, PLAIN, 5MM	1	1140000	F
		19	94101-08000	WASHER, PLAIN, 8MM	2		F
		19	94111-08000	WASHER, SPRING, 8MM	2		F

D 8

F-3

**Front fork · Front fender ·
Top bridge**



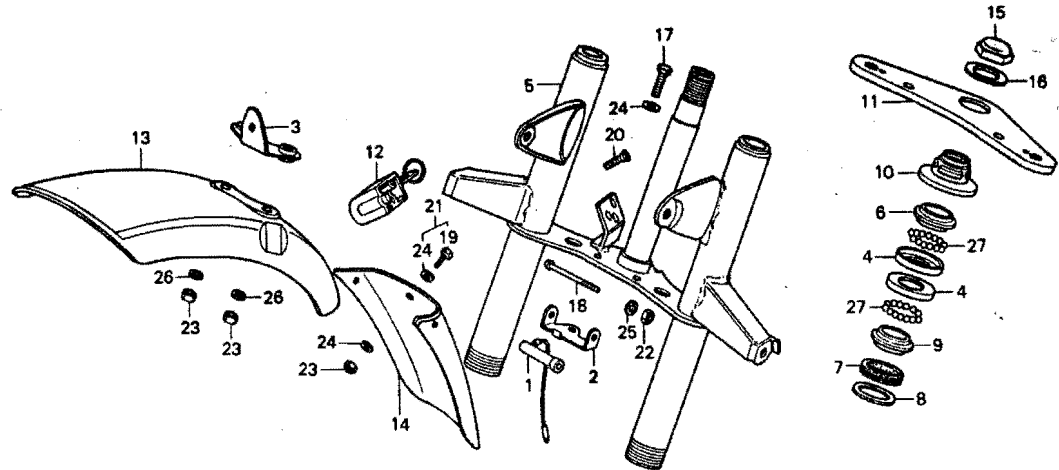
B130-53

Service item	F.R.T.	Ref. No.	Part No.	Description	Reqd. No. Z50J1	Serial No.	Area code
STEERING TOP/BOTTOM BALL RACE	0.7	1	35400-087-000	RESISTOR ASSY.	1		F,G
FRONT FORK COMP	1.2	2	35420-130-610	HOLDER, RESISTOR	1		F,G
STEERING HEAD TOP THREAD	0.4	3	38103-045-620	STAY, A.C. HURN	1		F
COMP. /TOP CONE RACE		4	50301-041-305	RACE, STEERING TOP BALL	2		
STEERING BOTTOM CONE RACE	0.6	5	51510-130-610ZA	FORK COMP., FR. *Y-31*	1		F,G
and its related parts			51510-130-610ZB	FORK COMP., FR. *G-20*	1		F,G
STEERING HANDLE LOCK COMP.	0.5		51510-130-640ZA	FORK COMP., FR. *Y-31*	1		DK,DM,SA,U
FRONT FENDER	0.2		51510-130-640ZB	FORK COMP., FR. *G-20*	1		DK,DM,SA,U
●FRONT MUDGUARD			51510-130-640ZC	FORK COMP., FR. *NH-24*	1		DK,DM,SA,U
STEERING STEM NUT	0.1	6	53211-028-305	RACE, STEERING TOP CONE	1		
FORK TOP BRIDGE	0.3	7	53214-001-010	JUST SEAL, STEERING HEAD	1		
		8	53215-120-000	WASHER, DUST SEAL	1		
		9	53217-030-305	RACE, STEERING BOTTOM CONE	1		
		10	53220-098-670	THREAD COMP., STEERING HANDLE TOP	1		
		11	53230-120-000SG	BRIDGE, FORK TOP	1	1180905	
			53231-120-000Sb	BRIDGE, FORK TOP	1	1180906	
		12	53600-044-000	LOCK COMP., STEERING HANDLE	1		DK,DM,SA,U
		13	61100-130-610	FENDER COMP., FR.	1		G
			61100-130-690XW	FENDER COMP., FR.	1		DK,DM,F,SA,U
		14	61114-130-610	MUDGUARD, FR.	1		G
			61114-130-810	MUDGUARD, FR.	(1)		U
		15	90304-011-000	NUT, STEERING STEM	1		
		16	90503-011-000	WASHER, STEERING STEM	1	1159146	DK,DM,F,G,U
			90503-051-870	WASHER, STEERING STEM	1	1159147	DK,DM,F,G,U
					1		S
		17	92000-06020	BOLT, HEX., 6X20	2		



F-3

Front fork · Front fender ·
Top bridge



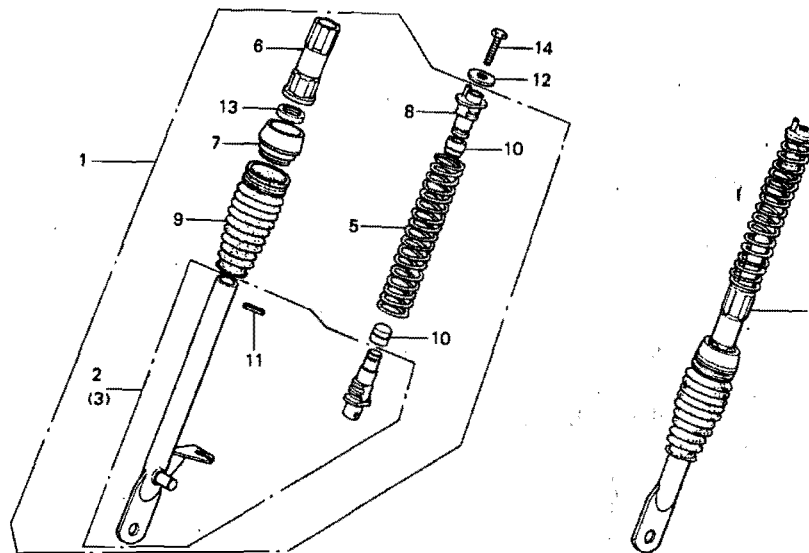
B130-53

Service item	F.R.T.	Ref. No.	Part No.	Description	Reqd. No. Z50J1	Serial No.	Area code
		18	93500-05055-0A	SCREW, PAN, 5X55	1		F,G
		19	93500-06012	SCREW, PAN, 6X12	3	1159146	G
					(3)	1159146	U
		20	93600-06012	SCREW, FLAT, 6X12	2	1140000	DK,DM,U
			90164-028-000	SCREW, U LOCK FLAT, 6X12	2	1140001	DK,DM,U
					2		SA
		21	93891-06012-00	SCREW-WASHER, 6X12	3	1159147	G
					(3)	1159147	U
		22	94001-05000-05	NUT, HEX., 5MM	1		F,G
		23	94001-06000	NUT, HEX., 6MM	2		DK,DM,F,SA
					5		G
					(3)		U
		24	94101-06000	WASHER, PLAIN, 6MM	8	1159146	G
					2		DK,DM,F,SA,U
					5	1159147	G
					(6)	1159146	U
					(3)	1159147	U
		25	94111-05000	WASHER, SPRING, 5MM	1		F,G
		26	94111-06000	WASHER, SPRING, 6MM	2		
		27	96211-06000	BALL, STEEL, #6 (3/16)	42		

D 10

F-4

Front cushion



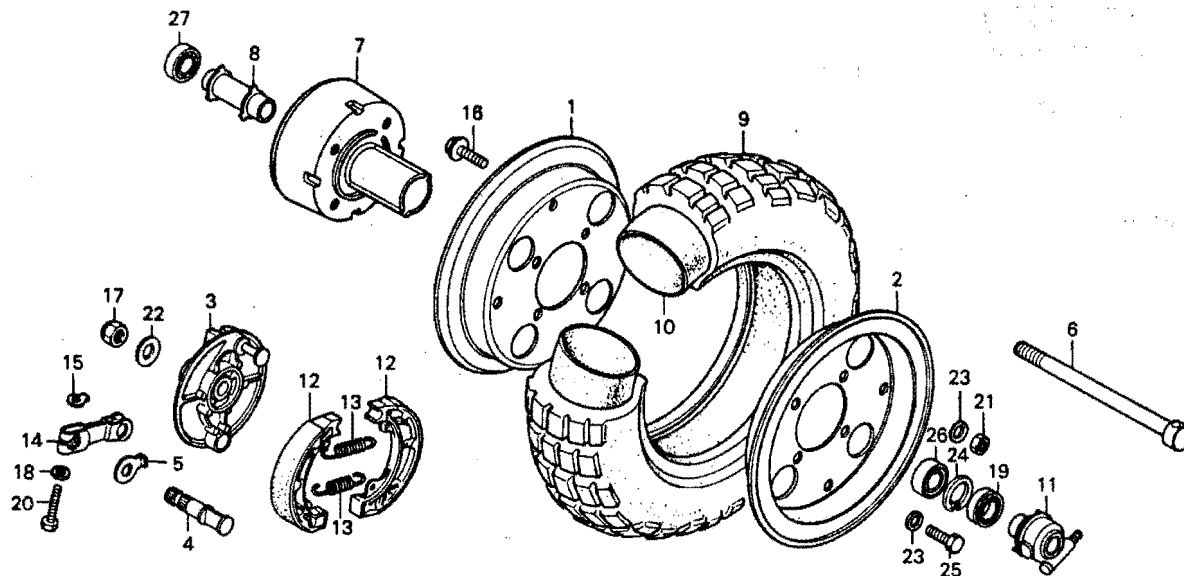
B130-15

Service item	F.R.T.	Ref. No.	Part No.	Description	Reqd. No. Z50J1	Serial No.	Area code
FRONT CUSHION ASSY. add 0.2	0.4	1	51400-120-000	CUSHION ASSY., R. FR.	1		
		2	51450-045-670	PIPE, R. FR. CUSHION SLIDE	1		
●FRONT FORK PIPE GUIDE/BOOT FRONT CUSHION SPRING/SLIDE HALF PIPE and those related parts	0.8	3	51460-045-670	PIPE, L. FR. CUSHION SLIDE	1		
		4	51500-120-000	CUSHION ASSY., L. FR.	1		
		5	51501-120-000	SPRING, FR. CUSHION	2		
		6	51502-045-670	GUIDE, FR. FORK PIPE	2		
		7	51503-064-010	CAP, FORK PIPE GUIDE	2		
		8	51504-120-000	HOLDER, SPRING UPPER	2		
		9	51505-064-010	BOOT, FR. FORK	2		
		10	51506-064-020	RUBBER, FR. CUSHION STOPPER	4		
		11	51526-064-000	PIN, SPRING	2		
		12	90551-033-000	WASHER, SPROCKET SETTING	2		
			90527-230-000	WASHER, PLAIN, 10.3MM	2	1159147	DN, DM, F, G, U SA
		13	90755-064-013	OIL SEAL, 20.7X30X7	2		
		14	93000-10032-0A	BOLT, HEX., 10X32	2		
			93000-10032-0b	BOLT, HEX., 10X32	2	1159147	DN, DM, F, G, U SA

D 11

F-5

Front wheel



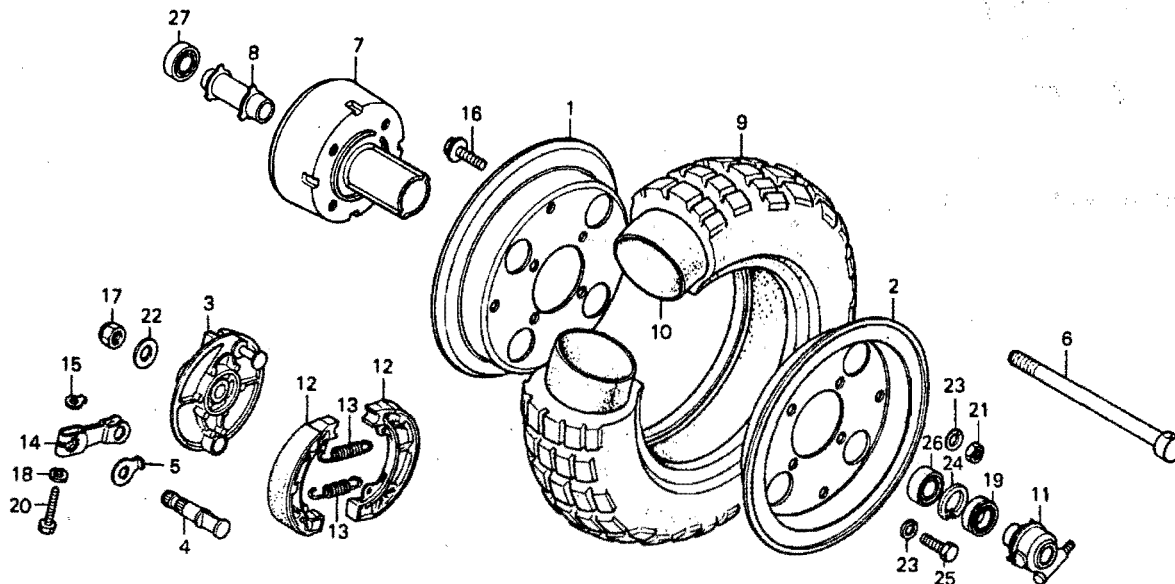
B130-54

Service item	F.R.T.	Ref. No.	Part No.	Description	Reqd. No. Z50J1	Serial No.	Area code
RIM/TIRE/TUBE	0.6	1	42701-045-670AU	RIM, R. WHEEL	1		
●FRONT WHEEL HUB		2	42702-045-670AU	RIM, L. WHEEL	1		
BRAKE PANEL and its related parts	0.4	3	43100-120-000AU	PANEL, RR. BRAKE	1	1112474	DK, DM, F, G, U
●DISTANCE COLLAR/BALL BEARING			43100-130-650AU	PANEL, RR. BRAKE	1	1196095	DK, DM, F, G, U
•BALL BEARING at add 0.1			43100-130-651ZA	PANEL, RR. BRAKE *NH-35A*	1	1196096	SA
WHEEL AXLE/SPEEDOMETER	0.2	4	43141-098-000	CAM, RR. BRAKE	1	1112474	DK, DM, F, G, U
GEAR BOX ASSY.			45131-400-000	CAM, FR. BRAKE	1	1112474	DK, DM, F, G, U
FRONT BRAKE ARM	0.1	5	43145-130-650	INDICATOR, RR. BRAKE	1	1112474	DK, DM, F, G, U
21×35×7 OIL SEAL	0.3				1		SA
		6	44301-045-010	AXLE, FR. WHEEL	1		
		7	44600-045-672AU	HUB, FR. WHEEL	1		
		8	44620-045-020	COLLAR, FR. AXLE DISTANCE	1		
		9	44711-120-671	TIRE, WHEEL (3.50-8, 2PR)(BS)	1		
			44711-120-672	TIRE, WHEEL (3.50-8, 2PR)	1		
				(NITTO)			
		10	44712-120-003	TUBE, WHEEL (3.50-8 BS)	1		
			44712-120-006	TUBE, WHEEL (3.50-8 NITTO)	1		
		11	44800-045-691	BOX ASSY., SPEEDOMETER GEAR	1		
		12	45120-001-010	SHOE COMP., FR. BRAKE	2	1112473	DK, DM, F, G, U
			45120-096-651	SHOE COMP., BRAKE (NIPPON)	2	1112474	DK, DM, F, G, U
					2		SA
			45120-096-652	SHOE COMP., BRAKE (ASAH)	2	1112474	DK, DM, F, G, U
					2		SA
		13	45133-028-000	SPRING, BRAKE SHOE	2		
		14	45410-120-000	ARM, FR. BRAKE	1	1112473	DK, DM, F, G, U

D 12

F-5

Front wheel



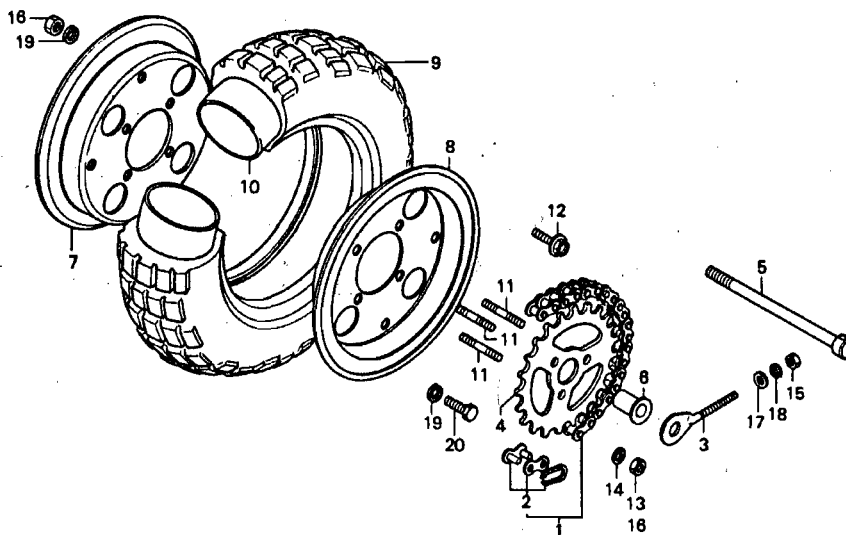
B130-54

Service item	F.R.T.	Ref. No.	Part No.	Description	Reqd. No. Z50J1	Serial No.	Area code
			45410-130-650	ARM, FR. BRAKE	1	1112474	JK, UM, F, G, U
		15	45436-001-000	NUT, FR. BRAKE ARM SETTING	1		S.
		16	90194-567-010	BOLT, SPLIT WHEEL	4		
		17	90353-045-000	NUT, SELF LOCK, 12MM	1		
		18	90525-001-000	WASHER, RR. BRAKE ARM	1		
		19	91252-001-020	OIL SEAL, 21X35X7	1		
		20	92000-06028	BOLT, HEX., 6X28	1		
		21	94030-04000	NUT, HEX., 8M4	4		
		22	94101-12000	WASHER, PLAIN, 12MM	1		
		23	94111-08000	WASHER, SPRING, 8MM	8		
		24	94520-32000	CIR CLIP, INTERNAL, 32	1		
		25	95300-08016-00	BOLT, HEX., 8X16	4		
		26	96100-62010	BEARING, RADIAL BALL, 6201	1		
		27	96140-62010	BEARING, RADIAL BALL, 6201U	1		

D 13

F-6

Rear wheel



B130-17

Service item	F.R.T.	Ref. No.	Part No.	Description	Reqd. No. Z50J1	Serial No.	Area code
DRIVE CHAIN and its related parts	0.2	1	40530-114-003	CHAIN, DRIVE (78L DAIDU)	1		G
FINAL DRIVEN SPROCKET	0.4		40530-130-612	CHAIN, ORIVE (78L TAKASAGO)	1		G
REAR WHEEL AXLE	0.3		40530-120-003	CHAIN, ORIVE (76L DAIDU)	1		DK, DM, F, SA, U
RIM/TIRE/TUBE	0.7		40530-120-005	CHAIN, DRIVE (76L TAKASAGO)	1		DK, DM, F, SA, U
8x45 STUD BOLT	0.5	2	40531-098-003	JOINT, DRIVE CHAIN (DAIDU)	1		
			40531-098-005	JOINT, DRIVE CHAIN (TAKASAGO)	1		
		3	40543-063-000	ADJUSTER, R. DRIVE CHAIN	1		
			95014-10010	ADJUSTER S, R. CHAIN	1		
		4	41201-120-000	SPROCKET, FINAL DRIVEN (37T)	1	1109458	DK, DM, U
			41201-120-010	SPROCKET, FINAL DRIVEN (37T)	1	1109459	DK, DM, U
					1		F, SA
			41201-130-611	SPROCKET, FINAL DRIVEN (40T)	1		G
		5	42301-041-030	AXLE, RR. WHEEL	1		
		6	42312-120-000	COLLAR, L. RR. WHEEL SIDE	1		
		7	42701-045-670AU	RIM, R. WHEEL	1		
		8	42702-045-670AU	RIM, L. WHEEL	1		
		9	44711-120-671	TIRE, WHEEL (3.50-8, 2PR)(BS)	1		
			44711-120-672	TIRE, WHEEL (3.50-8, 2PR)	1		
				(NITTO)			
		10	44712-120-003	TUBE, WHEEL (3.50-8 BS)	1		
			44712-120-006	TUBE, WHEEL (3.50-8 NITTO)	1		
		11	90125-120-000	BOLT, STUO, 8X45	3	1109458	DK, DM, U
			90125-120-010	BOLT, STUO, 8X45	3	1109459	DK, DM, U
					3		F, G, SA
		12	90194-567-010	BOLT, SPLIT WHEEL	4		
		13	90309-357-000	NUT, UBS, 8MM	3	1109459	DK, DM, U
					3		F, G, SA
		14	90529-045-000	WASHER, TONGUED, 8MM	3	1109458	DK, DM, U

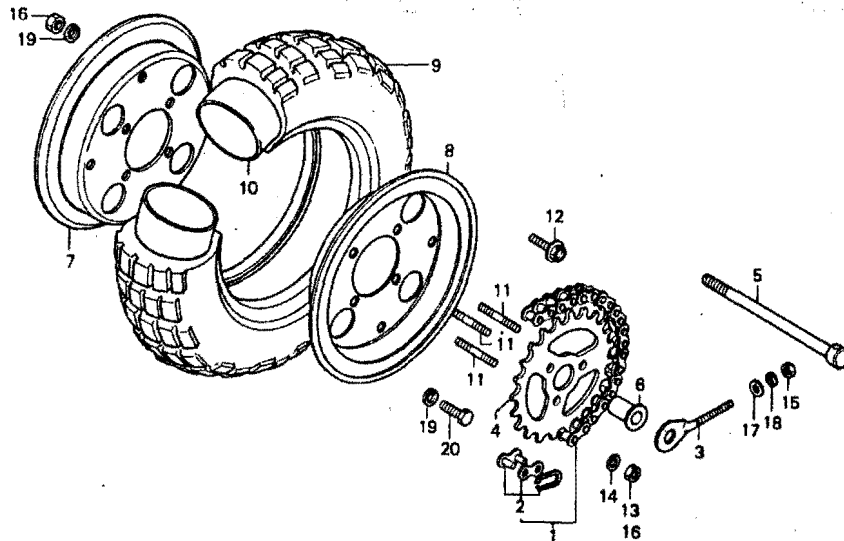
1979.09.10

013

D 14

F-6

Rear wheel



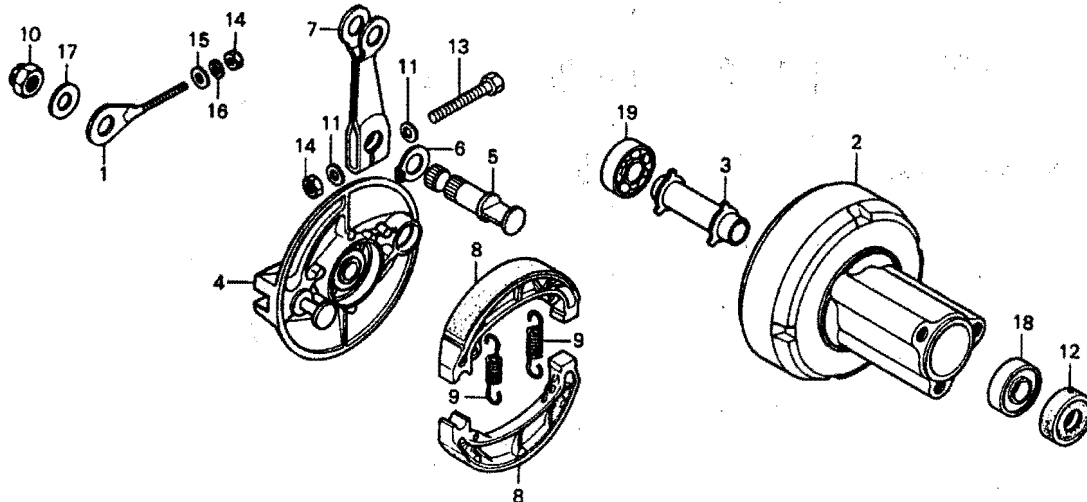
B130-17

Service item	F.R.T.	Ref. No.	Part No.	Description	Reqd. No. Z50J1	Serial No.	Area code
		15	94001-06000	NUT, HEX., 6MM	1		
		16	94030-08000	NUT, HEX., 8MM	7	1109458	DK, DM, F, G, U
					4		DK, DM, F, G, U
					4		SA
		17	94101-06000	WASHER, PLAIN, 6MM	1		
		18	94111-06000	WASHER, SPRING, 6MM	1		
		19	94111-08000	WASHER, SPRING, 8MM	8		
		20	95300-08016-00	BOLT, HEX., 8X16	4		

D 15

F-7

Rear brake panel



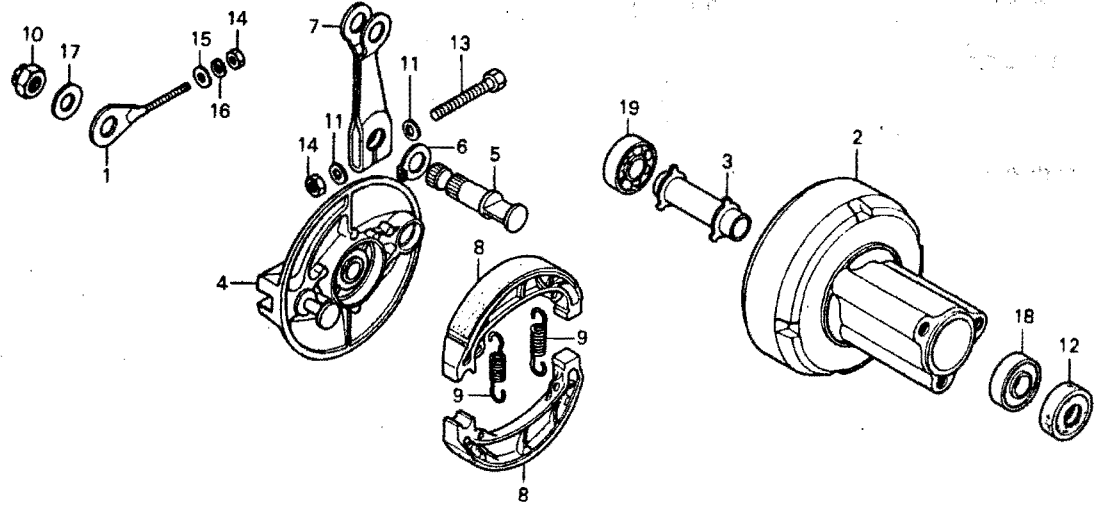
B130-55

Service item	F.R.T.	Ref. No.	Part No.	Description	Reqd. No. Z50J1	Serial No.	Area code
R.DRIVE CHAIN ADJUSTER	0.1	1	40543-063-000	ADJUSTER, R. DRIVE CHAIN	1		
REAR WHEEL HUB COMP.	1.0		95014-10010	ADJUSTER S, R. CHAIN	1		
REAR AXLE DISTANCE COLLAR	0.5	2	42601-120-000AU	HUB, RR. WHEEL	1		
/BALL BEARING		3	42620-045-020	COLLAR, RR. AXLE DISTANCE	1		
*BALL BEARING at ad 0.1		4	43100-120-000AU	PANEL, RR. BRAKE	1	1112474	OK, DM, F, G, U
BRAKE PANEL and its related parts	0.5		43100-130-650AU	PANEL, RR. BRAKE	1	1196095	OK, DM, F, G, U
BRAKE ARM	0.1		43100-130-651ZA	PANEL, RR. BRAKE *NH-35M*	1	1196096	1196095 SA
		5	43141-098-000	CAM, RR. BRAKE	1	1112474	OK, DM, F, G, U
			45131-400-000	CAM, FR. BRAKE	1	1112474	OK, DM, F, G, U SA
		6	43145-130-650	INDICATOR, RR. BRAKE	1	1112474	OK, DM, F, G, U SA
		7	43410-098-000	ARM, RR. BRAKE	1	1112474	OK, DM, F, G, U
			43410-130-650	ARM, RR. BRAKE	1	1112474	OK, DM, F, G, U SA
		8	45120-001-010	SHOE COMP., FR. BRAKE	2	1112474	OK, DM, F, G, U SA
			45120-096-651	SHOE COMP., BRAKE (NIPPON)	2	1112474	OK, DM, F, G, U SA
			45120-096-652	SHOE COMP., BRAKE (ASAHI)	2	1112474	OK, DM, F, G, U SA
		9	45133-028-000	SPRING, BRAKE SHOE	2		
		10	90353-045-000	NUT, SELF LOCK, 12MM	1		
		11	90525-001-000	WASHER, RR. BRAKE ARM	2		
		12	91251-045-005	OIL SEAL, 18X32X8	1		
		13	92000-06035	BOLT, HEX., 6X35	1		
		14	94001-06000	NUT, HEX., 6MM	2		
		15	94101-06000	WASHER, PLAIN, 6MM	1		

D 16

F-7

Rear brake panel



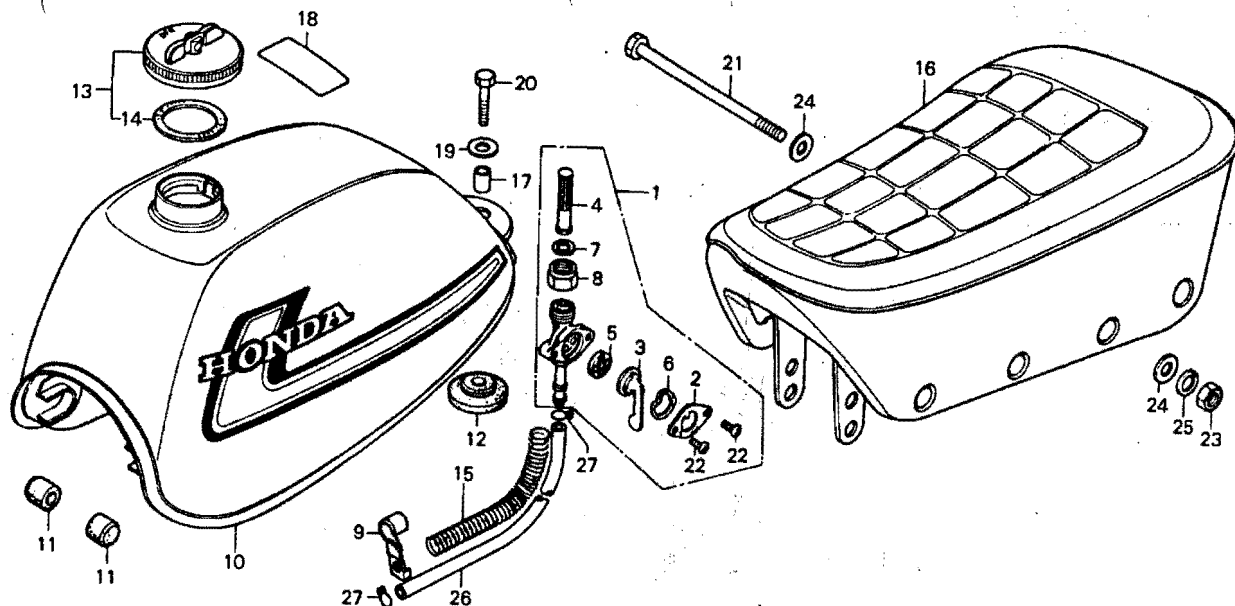
B130-55

Service item	F.R.T.	Ref. No.	Part No.	Description	Reqd. No. Z50J1	Serial No.	Area code
		16	94111-06000	WASHER, SPRING, 6MM	1		
		17	94111-12000	WASHER, SPRING, 12MM	1		
		18	96100-62010	BEARING, RADIAL BALL, 6201	1		
		19	96140-62010	BEARING, RADIAL BALL, 6201U	1		

E 1

F-8

Fuel tank · Seat



B130-19

Service item	F.R.T.	Ref. No.	Part No.	Description	Reqd. No. Z50J1	Serial No.	Area code
FUEL COCK ASSY. and its related parts	0.2	1	16950-045-005	COCK ASSY., FUEL	1		
FUEL TANK COMP.	0.3	2	16952-081-005	COVER, FUEL COCK	1		
SEAT COMP.	0.1	3	16953-081-005	LEVER, FUEL COCK	1		
		4	16954-045-005	STRAINER, FUEL COCK	1		
		5	16955-028-004	GASKET, COCK LEVER	1		
		6	16956-028-004	SPRING, COCK LEVER	1		
		7	16958-081-005	GASKET, FUEL STRAINER CUP	1		
		8	16962-081-005	NUT, TURN BUCKLE	1		
		9	17121-130-640	CLAMPEK, FUEL TUBE	1		
		10	17500-130-640ZA	TANK COMP., FUEL *Y-31*	1		
			17500-130-640ZB	TANK COMP., FUEL *G-20*	1		
			17500-130-640ZC	TANK COMP., FUEL *NH-24*	1		DK, DM, SA, U
		11	17611-045-670	PAD, FUEL TANK FR.	2		
		12	17613-120-000	CUSHION, FUEL TANK	1		
		13	17620-045-670	CAP, FUEL FILLER	1	1149296	DK, DM, F, G, U
			17620-045-671	CAP, FUEL FILLER	1	1149296	DK, DM, F, G, U
					1		SA
		14	17631-001-000	GASKET, FUEL FILLER LIP	1		1123235
			17682-634-003	PACKING, FUEL FILLER CAP	1	1123236	1149295
			17631-096-700	PACKING, FUEL FILLER CAP	1	1149296	
		15	50125-358-000	PROTECTOR, OIL TUBE	2		
		16	77100-130-000A	SEAT COMP.	1		
		17	80109-061-010	COLLAR B, RR. FENDER	1		
		18	8756C-375-680A	MARK, DRIVE CAUTION	1		DK, DM, SA, U
			8756C-375-680B	MARK, DRIVE CAUTION	1	1190815	F
					1		DK, DM, G, SA, U
			87560-124-620B	MARK, DRIVE CAUTION (FRENCH)	1	1190816	F

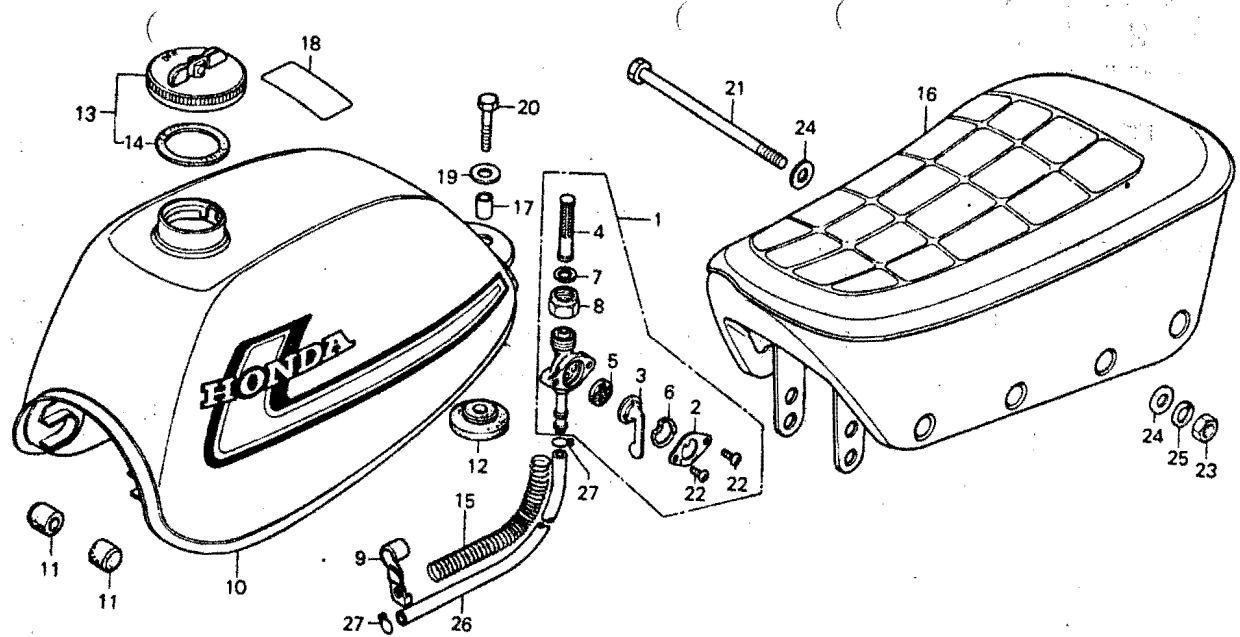
1979.09.10

E1

E 2

F-8

Fuel tank • Seat



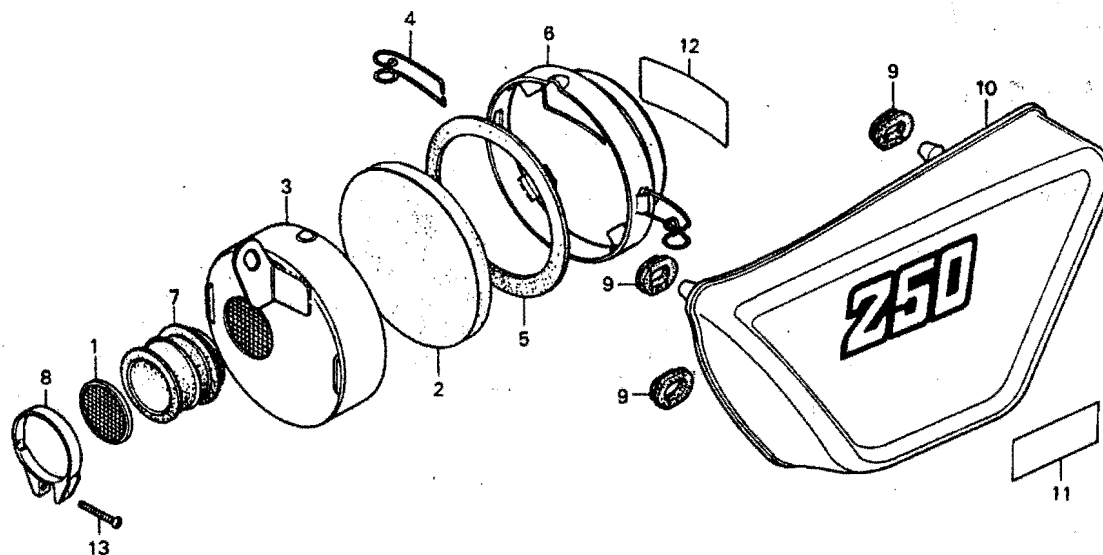
B130-19

Service item	F.R.T.	Ref. No.	Part No.	Description	Reqd. No. Z50J1	Serial No.	Area code
		19	90514-700-000	WASHER, TANK COLLAR LOCKING	1		
		20	92000-06025	BOLT, HEX., 6X25	1		
		21	92000-08100-DA	BOLT, HEX., 8X100	2		
		22	93500-03006-DA	SCREW, PAN, 3X6	2		
		23	94001-08000-05	NUT, HEX., 8MM	2		
		24	94101-03000	WASHER, PLAIN, 8MM	4		
		25	94111-08000	WASHER, SPRING, 8MM	2		
		26	95001-45260-40	TUBE, FUEL, 4.5X260	1		
		27	95002-02080	CLIP BB, TUBE	2		

E 3

F-9

Air cleaner - Side cover



B130-20

Service item	F.R.T.	Ref. No.	Part No.	Description	Reqd. No. Z50J1	Serial No.	Area code
AIR CLEANER ELEMENT and its related parts	0.1	1	16202-045-720	TRAP, FRAME	1		
		2	17211-120-000	ELEMENT, AIR CLEANER	1		
		3	17221-120-010	CASE, AIR CLEANER	1		
•SIDE COVER		4	17222-120-020	SPRING, CLEANER CASE	2		
AIR CLEANER CASE	0.3	5	17225-120-000	SEAL, AIR CLEANER	1		
AIR CLEANER CONNECTING TUBE	0.2	6	17231-120-020	COVER, AIR CLEANER	1		
		7	17253-120-010	TUBE, AIR CLEANER CONNECTING	1		
		8	17255-098-000	BAND, AIR CLEANER CONNECTING	1		
		9	83551-300-000	GROMMET, AIR CLEANER CASE	3		
		10	83640-130-640ZA	COVER COMP., L. SIDE *Y-31*	1		
			83640-130-640ZB	COVER COMP., L. SIDE *G-20*	1		
			83640-130-640ZC	COVER COMP., L. SIDE *NH-24*	1		DK, DM, SA, U
		11	87507-130-650B	LABEL B, CAUTION	1		DK, DM, SA, U
			87507-130-650ZA	LABEL B, CAUTION *A-03*	1		DK, DM, SA, U
			87507-130-720ZA	LABEL B, CAUTION *NH-1*	1	1190815	F
					1		G
			87507-130-720ZB	LABEL B, CAUTION *A-03*	1	1190815	F
					1		G
			87504-130-620ZA	LABEL, FRAME CAUTION *NH-1* (FRENCH)	1	1190816	F
			87504-130-620ZB	LABEL, FRAME CAUTION *A-03* (FRENCH)	1	1190816	F
		12	87508-120-000	LABEL, AIR CLEANER CAUTION	1	1190815	F
			87507-382-620	LABEL, AIR CLEANER CAUTION (FRENCH)	1	1190816	DK, DM, G, SA, U
					1		F
		13	93500-04025-0A	SCREW, PAN, 4X25	1		

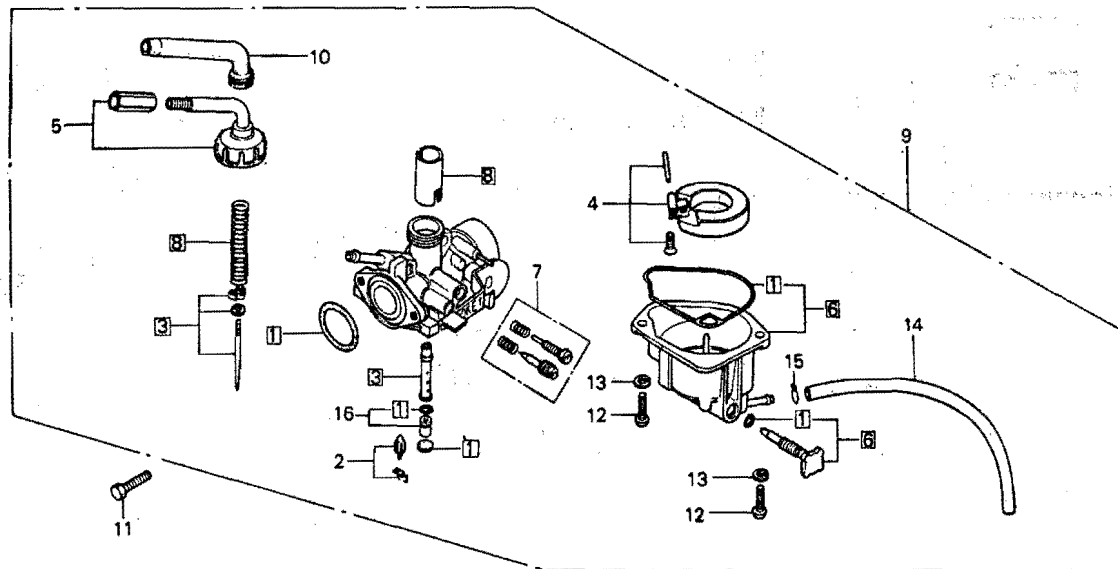
1979.09.10

E3

E 4

F-10

Carburetor



B130-21

Service item	F.R.T.	Ref. No.	Part No.	Description	Reqd. No. Z50J1	Serial No.	Area code
CARBURETOR ASSY.	0.3	1	16010-C81-004	PACKING SET	1		
● THROTTLE VALVE SET		2	16011-143-620	VALVE SET, FLOAT	1		
● FLOAT CHAMBER			16011-147-004	VALVE SET, FLOAT	1	FAU3A B	PAU3A A
FLOAT SET	0.4	3	16012-130-610	NEEDLE SET, JET	1		G
● MAIN JET		4	16012-130-640	NEEDLE SET, JET	1		OK, DM, F, SA, U
JET NEEDLE SET	0.5	5	16013-143-620	FLOAT SET	1		
SCREW SET	0.2		16014-130-640	TOP SET	1		
		6	16015-130-640	CHAMBER SET, FLOAT	1		
		7	16016-143-620	SCREW SET	1		
		8	16022-081-004	VALVE SET, THROTTLE	1		OK, DM, F, SA, U
			16022-143-620	VALVE SET, THROTTLE	1		G
		9	16100-130-611	CARBURETOR ASSY.	1		G
			16100-130-641	CARBURETOR ASSY.	1	1192001	OK, DM, F, SA, U
			16100-130-642	CARBURETOR ASSY.	1	1192002	OK, DM, F, SA, U
		10	16118-121-014	CAP, RUBBER	1		
		11	92000-06020	BOLT, HEX., 6X20	2		
		12	93500-04012-0A	SCREW, PAN, 4X12	2		
		13	94111-04000	WASHER, SPRING, 4MM	2		
		14	95001-35180-40	TUBE, FUEL, 3.5X180	1		
		15	95002-02070	CLIP 87, TUBE	1		
		16	99201-081-0550	JET SET, MAIN (#55)	1		G
			99201-081-0580	JET SET, MAIN, #58	1		OK, DM, F, SA, U

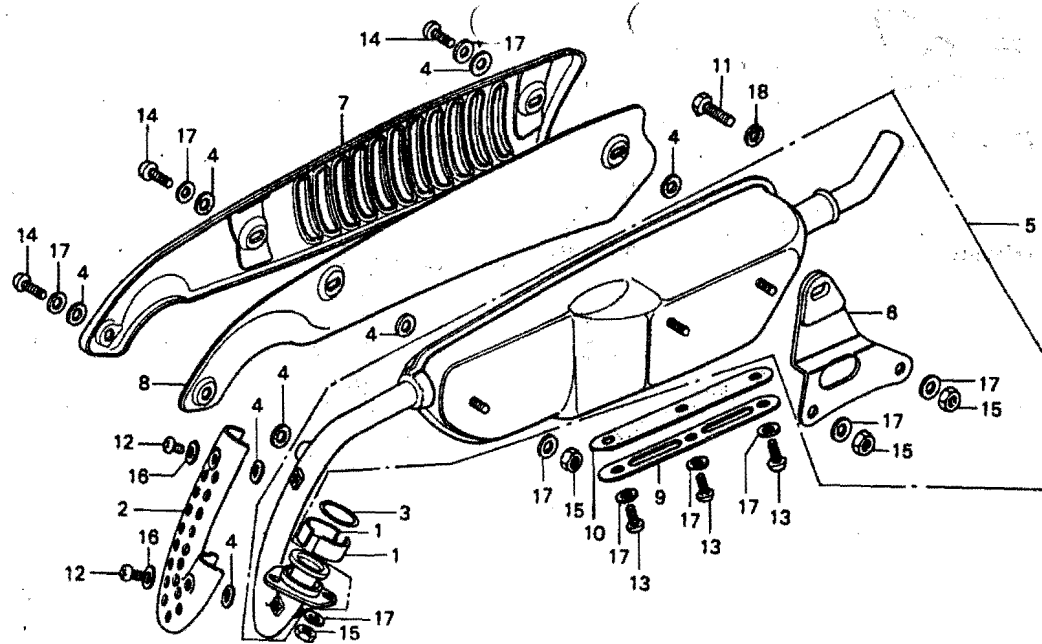
1979.09.10

14

E 5

F-11

Exhaust muffler



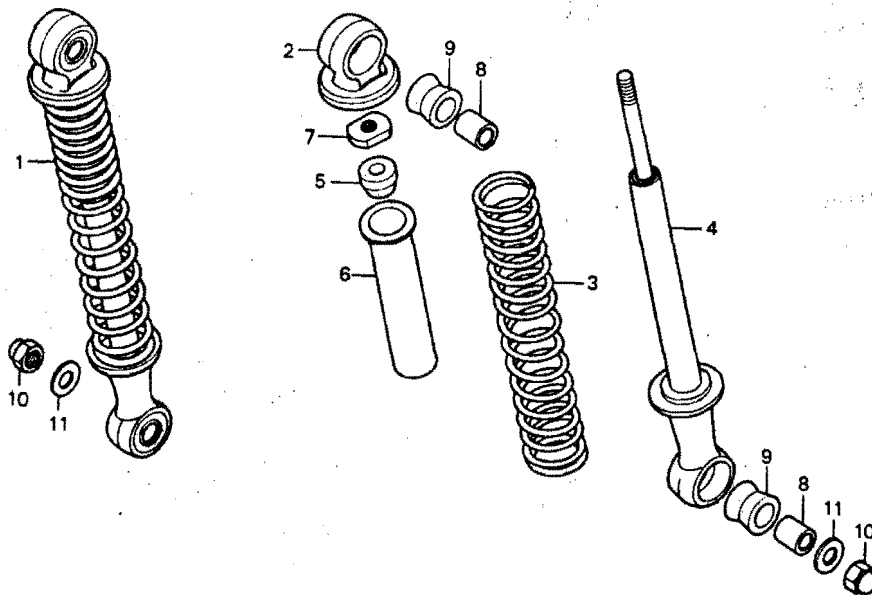
B130-22

Service item	F.R.T.	Ref. No.	Part No.	Description	Reqd. No. 250J1	Serial No.	Area code
EXHAUST PIPE COVER A.	0.1	1	18233-041-000	COLLAR, EX. PIPE JOINT	2	1162095	
●MUFFLER PROTECTOR		2	18233-051-000	COLLAR, EX. PIPE JOINT	2	1162096	
EXHAUST MUFFLER COMP.	0.2	2	18240-130-640ZA	COVER A, EX. PIPE *NH-106*	1		
●HANGER STAY		3	18291-001-010	GASKET, EX. PIPE	1		
●MUFFLER RID		4	18292-290-000	GASKET, PROTECTOR	8	1123235	
			18292-329-000	PACKING, PROTECTOR	8	1123236	
		5	18300-130-610	MUFFLER COMP., EX.	1	1123651	G
			18300-130-640	MUFFLER COMP., EX.	1	1123235	DK, DM, F, U
			18300-130-611	MUFFLER COMP., EX.	1	1123652	G
			18300-130-641	MUFFLER COMP., EX.	1	1123236	DK, DM, F, U
					1		SA
		6	18353-120-000CT	STAY, MUFFLER HANGER	1		
		7	18360-120-000XW	PROTECTOR, MUFFLER	1		
		8	18361-120-000	PROTECTOR B, MUFFLER	1		
		9	18373-120-000	LID, MUFFLER	1		
		10	18374-120-000	PACKING, MUFFLER LID	1		
		11	92000-08020-0A	BOLT, HEX., 8X20	1		
		12	93500-05006-0A	SCREW, PAN, 5X6	2	1123235	
			93500-06006	SCREW, PAN, 6X6	2	1123236	
		13	93500-06012	SCREW, PAN, 6X12	3		
		14	93500-06014	SCREW, PAN, 6X14	3		
		15	94001-06000-0S	NUT, HEX., 6MM	5		
		16	94101-05000	WASHER, PLAIN, 5MM	2	1123235	
			94101-06000	WASHER, PLAIN, 6MM	2	1123236	
		17	94101-06000	WASHER, PLAIN, 6MM	11		
		18	94111-08000	WASHER, SPRING, 8MM	1		

E 6

F-12

Rear cushion



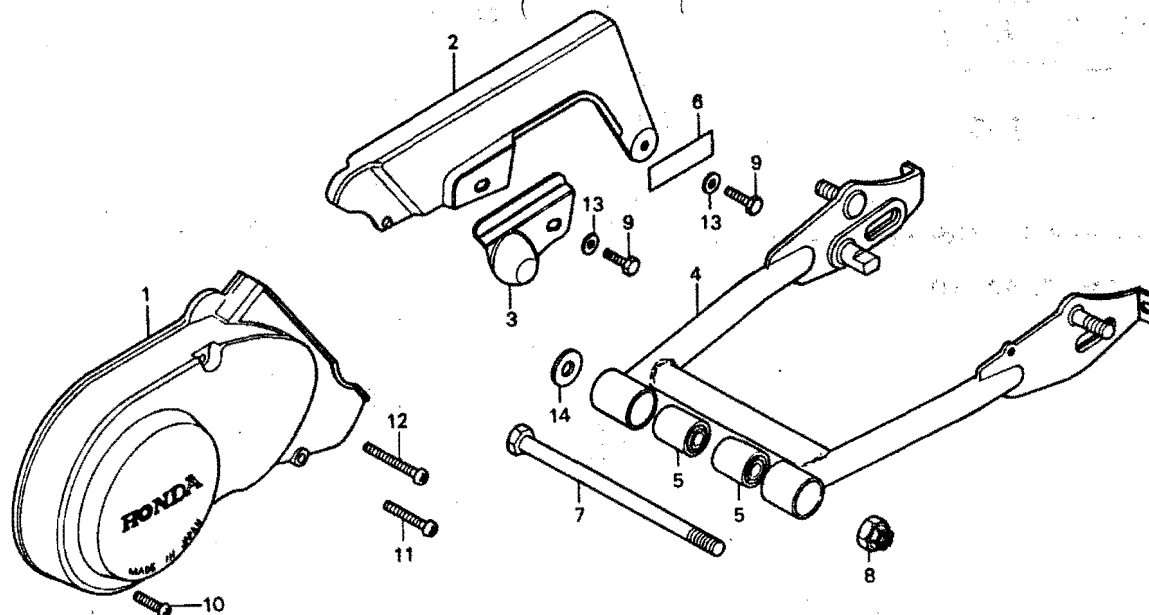
B130-23

Service item	F.R.T.	Ref. No.	Part No.	Description	Reqd. No. Z50J1	Serial No.	Area code
REAR CUSHION ASSY.	0.1	1	52400-120-000	CUSHION ASSY., RR.	2		
REAR CUSHION SPRING and its related parts	0.3	2	52401-028-000	METAL, RR. CUSHION UPPER	2		
		3	52401-120-010	SPRING, RR. CUSHION	2		
		4	52450-120-000	DAMPER COMP., RR.	2		
		5	52475-051-000	RUBBER, RR. CUSHION STOPPER	2		
		6	52476-028-010	GUIDE, RR. CUSHION SPRING	2		
		7	52481-051-000	NUT, RR. CUSHION UPPER LOCK	2		
		8	52486-035-000	COLLAR, RR. CUSHION RUBBER	4		
		9	52489-028-000	BUSH, RR. CUSHION RUBBER	4		BUSH
		10	94021-10000-05	NUT, CAP, 10MM	2		
		11	94101-10000	WASHER, PLAIN, 10MM	2		

E 7

F-13

**Left crankcase cover ·
Rear fork**



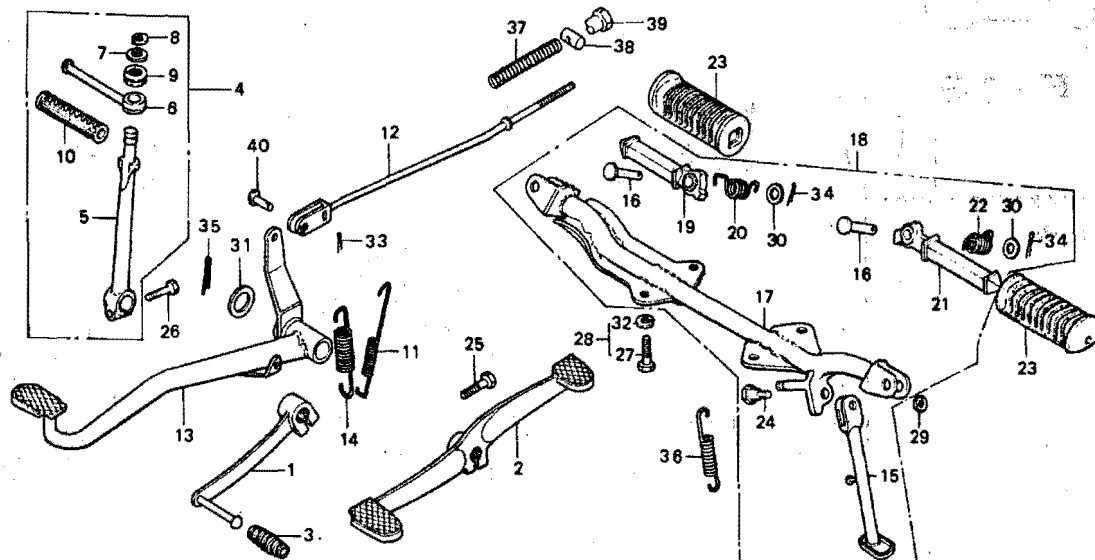
B130-56

Service item	F.R.T.	Ref. No.	Part No.	Description	Reqd. No. Z50J1	Serial No.	Area code
REAR FORK PIVOT RUBBER BUSH/ REAR FORK COMP.	0.7	1	11341-120-010	COVER COMP., L. CRANKCASE	1		
L. CRANKCASE COVER COMP. ●DRIVE CHAIN CASE	0.1	2	40510-130-670B	CASE, DRIVE CHAIN	1		
		3	40515-130-640	COVER, RR. FORK PIVOT	1		
		4	52100-120-020B	FORK COMP., RR.	1	1197075	
		5	52100-165-000ZA	FORK COMP., RR. *NH-1*	1	1197076	
		5	52108-081-000	BUSH, RR. FORK PIVOT RUBBER	2		
		6	87505-130-610	MARK, TIRE CAUTION	1	1190815	F
			87505-130-700	MARK, TIRE CAUTION	1		G
			87505-130-710	MARK, TIRE CAUTION	1		OK, DM, U
			87505-130-621	MARK, TIRE CAUTION (FRENCH)	1	1190816	SA
		7	90121-063-000	BOLT, RR. FORK PIVOT	1		F
		8	90351-268-000	NUT, SELF LOCK, 10MM	1		
		9	92000-06012	BOLT, HEX., 6X12	2		
		10	93500-06020	SCREW, PAN, 6X20	1		
		11	93500-06028	SCREW, PAN, 6X28	1		
		12	93500-06038	SCREW, PAN, 6X38	1		
		13	94101-06000	WASHER, PLAIN, 6MM	2		
		14	94101-10000	WASHER, PLAIN, 10MM	1		



F-14

Brake pedal · Kick arm · Step
(DK, DM, F, SA, U)



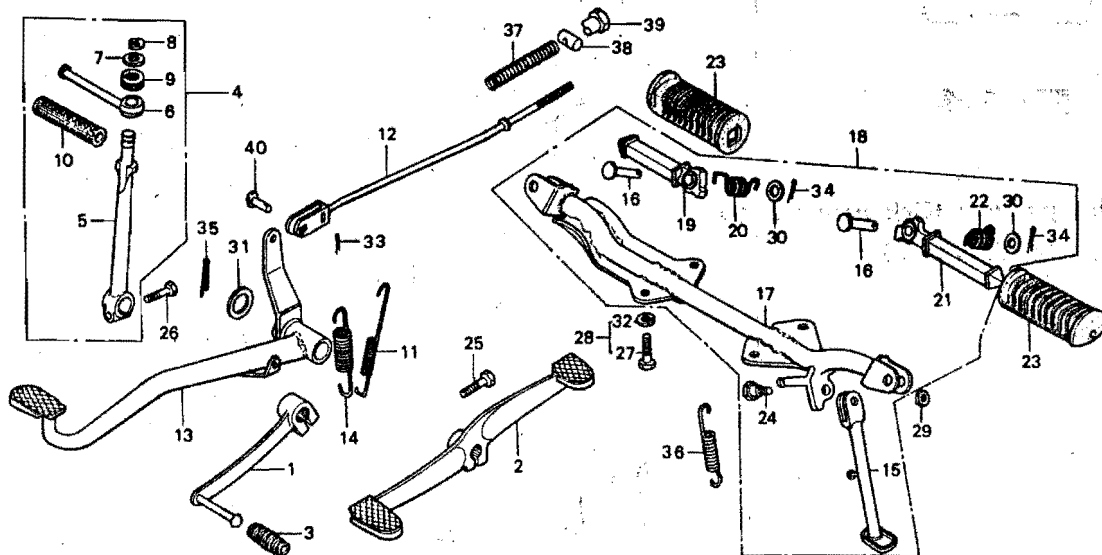
B130-57

Service item	F.R.T.	Ref. No.	Part No.	Description	Reqd. No. Z50J1	Serial No.	Area code
GEAR CHANGE PEDAL ●KICK STARTER ARM and its related parts ●STEP ARM and its related parts ●SIDE STAND SPRING	0.1	1	24700-120-000	PEDAL, GEAR CHANGE	1	1149988	F
			24701-130-740	PEDAL, GEAR CHANGE	1	1149989	F
		2	24701-045-760	PEDAL, GEAR CHANGE	1		DK, DM, SA, U
REAR BRAKE PEDAL/ROD	0.2	3	24781-205-000	RUBBER, GEAR CHANGE PEDAL	1	1140000	F
			95011-40000	RUBBER, CHANGE PEDAL	1	1140001	F
STEP BAR COMP.	0.3	4	28300-120-000	ARM ASSY., KICK STARTER	1		DK, DM, F, SA, U
		5	28301-120-000	ARM, KICK STARTER	1		DK, DM, F, SA, U
		6	28302-033-000	PEDAL, KICK STARTER	1		DK, DM, F, SA, U
		7	28303-001-000	WASHER, KICK STARTER KNUCKLE	1		DK, DM, F, SA, U
		8	28304-001-000	CLIP, KICK STARTER KNUCKLE	1		DK, DM, F, SA, U
		9	28305-001-000	SPRING, KICK STARTER KNUCKLE	1		DK, DM, F, SA, U
		10	28311-001-000	RUBBER, KICK STARTER	1		DK, DM, F, SA, U
		11	35357-045-720	SPRING, STOP SWITCH	1		DK, DM, F, SA, U
		12	43451-120-010	ROD, RR. BRAKE	1		DK, DM, F, SA, U
		13	40500-130-690	PEDAL, RR. BRAKE	1		DK, DM, F, SA, U
		14	46514-028-000	SPRING, BRAKE PEDAL	1		DK, DM, F, SA, U
		15	50530-130-640	STAND COMP., SIDE	1	1110054	DK, DM, U F, SA
		16	50603-033-000	PIN, STEP BAR JOINT	2		DK, DM, F, SA, U
		17	50610-130-640	BAR COMP., STEP	1	1110054	DK, DM, U F, SA
		18	50610-130-690B	BAR COMP., STEP	1	1110053	DK, DM, U
		19	50616-312-010	ARM COMP., R. STEP	1		DK, DM, F, SA, U
		20	50617-056-670	SPRING, P. STEP RETURN	1		DK, DM, F, SA, U
		21	50642-312-010	ARM COMP., L. STEP	1		DK, DM, F, SA, U
		22	50644-056-670	SPRING, L. STEP RETURN	1		DK, DM, F, SA, U

E 9

F-14

**Brake pedal · Kick arm · Step
(DK, DM, F, SA, U)**

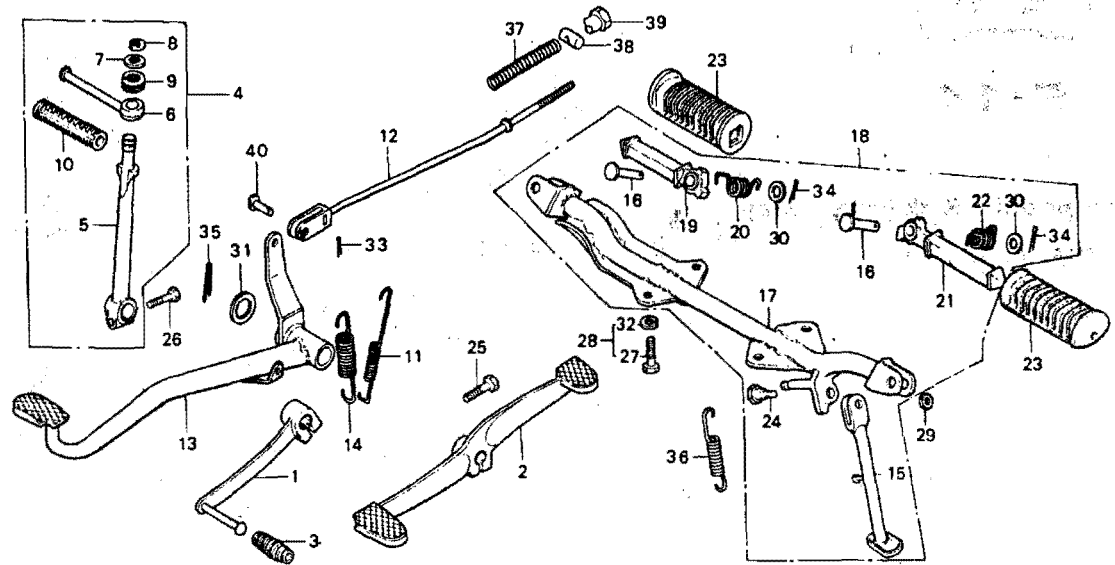


B130-57

Service item	F.R.T.	Ref. No.	Part No.	Description	Reqd. No. Z50J1	Serial No.	Area code
		23	50661-312-000	RUBBER, STEP	2		DK, DM, F, SA, U
		24	90108-223-000	SCREW, SIDE STAND PIVOT	1	1110054	DK, DM, U
					1		F, SA
		25	92000-06020	BOLT, HEX., 6X20	1		DK, DM, F, SA, U
		26	92000-06022	BOLT, HEX., 6X22	1		DK, DM, F, SA, U
		27	92000-08020-0A	BOLT, HEX., 8X20	4	1140000	DK, DM, F, U
		28	93482-08020-0U	BOLT-WASHER, 8X20	4	1140001	DK, DM, F, U
					4		SA
		29	94002-10000-05	NUT, HEX., 10MM	1	1110054	DK, DM, U
					1		F, SA
		30	94101-08000	WASHER, PLAIN, 8MM	2		DK, DM, F, SA, U
		31	94102-14000	WASHER, PLAIN, 14MM	1		DK, DM, F, SA, U
		32	94111-09000	WASHER, SPRING, 8MM	4	1140000	DK, DM, F, U
		33	94201-16120	PIN, SPLIT, 1.6X12	1	1140000	DK, DM, F, U
			94201-16150	PIN, SPLIT, 1.6X15	1	1140001	DK, DM, F, U
					1		SA
					2		DK, DM, F, SA, U
		34	94201-16150	PIN, SPLIT, 1.6X15	1	1140000	DK, DM, F, U
		35	94201-30300	PIN, SPLIT, 3.0X30	1	1140001	DK, DM, F, U
			94201-30250	PIN, SPLIT, 3.0X25	1	1140001	DK, DM, F, U
					1		SA
		36	95014-72101	SPRING A, SIDE STAND	1	1158275	DK, DM, F, U
			95014-72102	SPRING A, SIDE STAND	1	1158276	DK, DM, F, U
					1		SA
		37	95014-73100	SPRING A, BRAKE ROD	1		DK, DM, F, SA, U
		38	95015-31000	JOINT A, BRAKE ARM	1	1112473	DK, DM, F, U
			95015-32001	JOINT B, BRAKE ARM	1	1112474	DK, DM, F, U
					1		SA

E 10**F-14**

Brake pedal · Kick arm · Step
(DK, DM, F, SA, U)



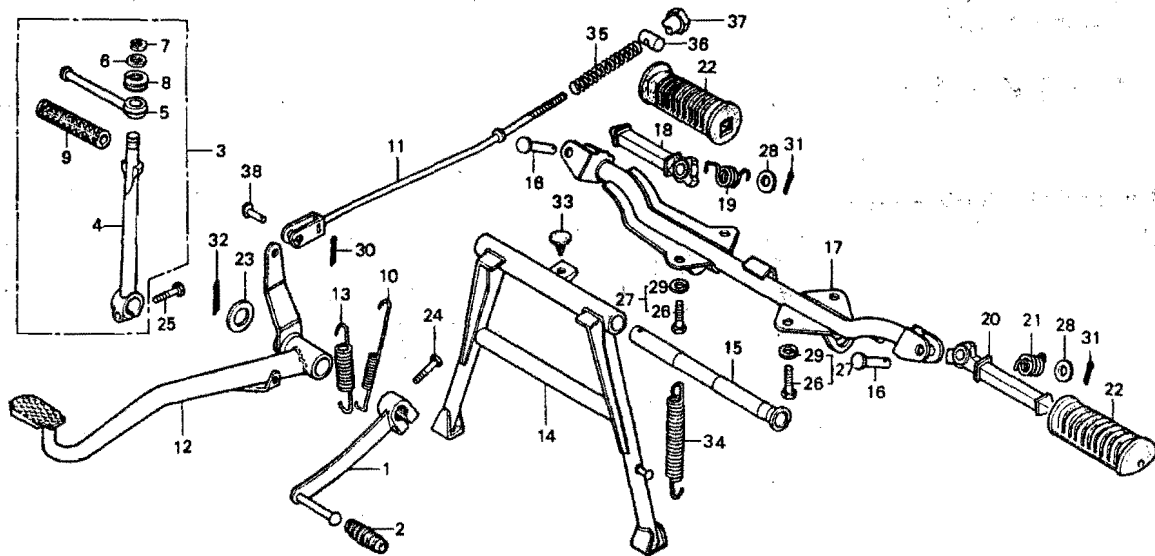
B130-57

Service item	F.R.T.	Ref. No.	Part No.	Description	Reqd. No. Z50J1	Serial No.	Area code
		39	95015-41000	NUT A, BRAKE ROD ADJUST	1	1112473	DK, DM, F, U
			95015-42000	NUT B, BRAKE ROD ADJUST	1	1112474	DK, DM, F, U
					1		SA
		40	95015-52000	PIN B, BRAKE ROD JOINT	1		DK, DM, F, SA, U

E 11

F-14-1

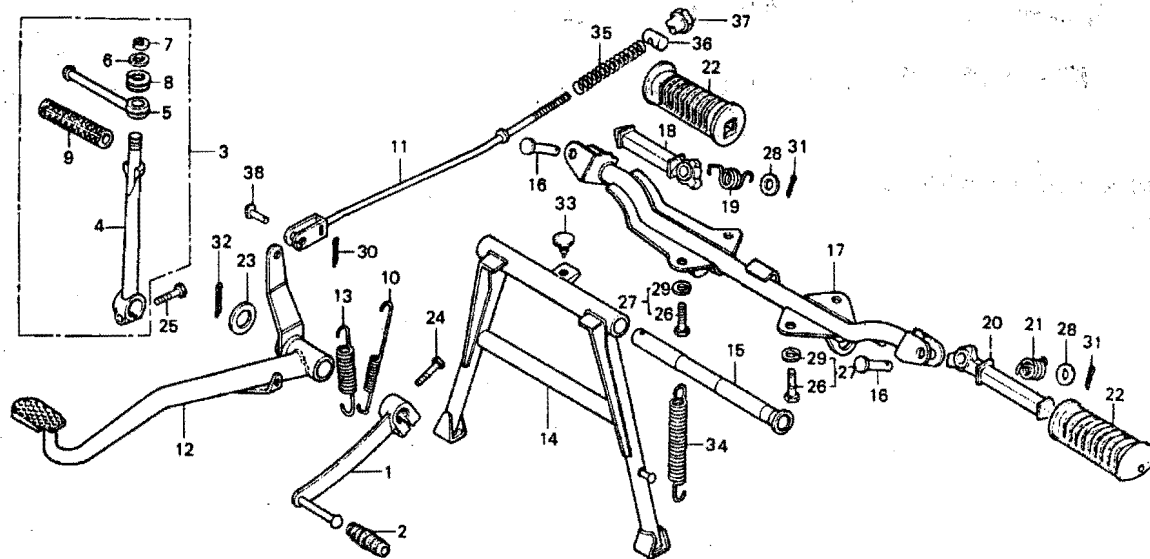
Brake pedal · Kick arm ·
Step (G)



B130-58

Service item	F.R.T.	Ref. No.	Part No.	Description	Reqd. No. Z50J1	Serial No.	Area code
MAIN STAND COMP.	0.5	1	24700-120-000	PEDAL, GEAR CHANGE	1	1149988	G
STEP BAR COMP.	0.3	2	24701-130-740	PEDAL, GEAR CHANGE	1	1149989	G
REAR BRAKE PEDAL/ROD	0.2	2	24781-205-000	RUBBER, GEAR CHANGE PEDAL	1	1140000	G
GEAR CHANGE PEDAL	0.1	3	95011-4000G	RUBBER, CHANGE PEDAL	1	1140001	G
● KICK STARTER ARM and its related parts		3	28300-120-000	ARM ASSY., KICK STARTER	1		G
● STEP ARM and its related parts		4	28301-120-000	ARM, KICK STARTER	1		G
● SIDE STAND SPRING		5	28302-033-000	PEDAL, KICK STARTER	1		G
● MAIN STAND SPRING		6	28303-001-000	WASHER, KICK STARTER KNUCKLE	1		G
		7	28304-001-000	CLIP, KICK STARTER KNUCKLE	1		G
		8	28305-001-000	SPRING, KICK STARTER KNUCKLE	1		G
		9	28311-001-000	RUBBER, KICK STARTER	1		G
		10	35357-045-720	SPRING, STOP SWITCH	1		G
		11	43451-120-010	ROD, RR. BRAKE	1		G
		12	46500-130-690	PEDAL, RR. BRAKE	1		G
		13	46514-028-000	SPRING, BRAKE PEDAL	1		G
		14	50500-130-610	STAND COMP., MAIN	1		G
		15	50512-141-000	PIPE, RR. BRAKE PIVOT	1	1191149	G
			50512-041-000	PIPE, RR. BRAKE PIVOT	1	1191150	G
		16	50603-033-000	PIN, STEP BAR JOINT	2		G
		17	50610-130-610	BAR COMP., STEP	1		G
		18	50616-312-010	ARM COMP., R. STEP	1		G
		19	50617-056-670	SPRING, R. STEP RETURN	1		G
		20	50642-312-010	ARM COMP., L. STEP	1		G
		21	50644-056-670	SPRING, L. STEP RETURN	1		G
		22	50661-312-000	RUBBER, STEP	2		G
		23	90521-028-000	WASHER, 17X22	1	1191149	G

F-14-1

Brake pedal · Kick arm ·
Step (G)

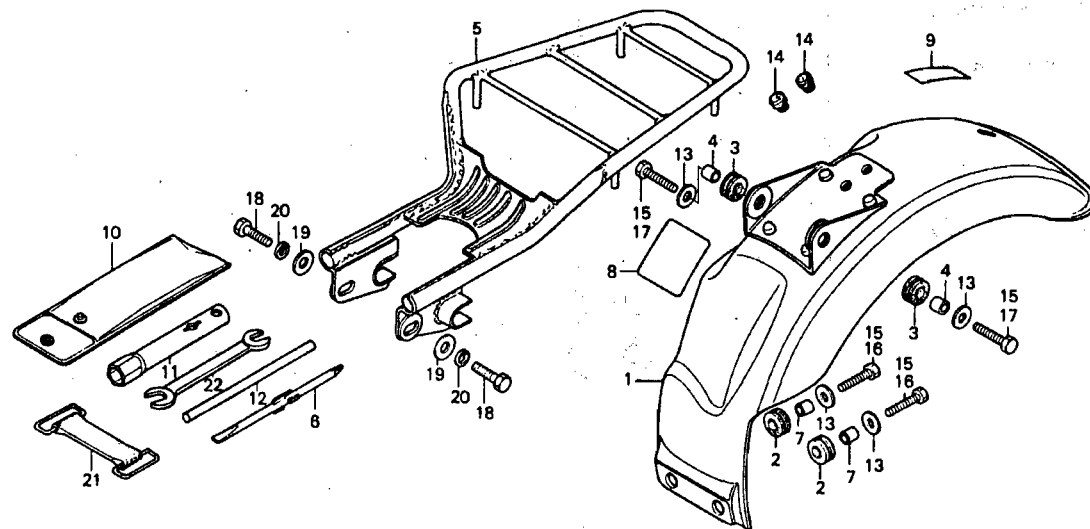
B130-58

Service item	F.R.T.	Ref. No.	Part No.	Description	Reqd. No. Z50J1	Serial No.	Area code
		24	92000-06020	BOLT, HEX., 6X20	1		G
		25	92000-06022	BOLT, HEX., 6X22	1		G
		26	92000-08020-0A	BOLT, HEX., 8X20	4		G
		27	93482-08020-00	BOLT-WASHER, 8X20	4	1140001	1140000 G
		28	94101-08000	WASHER, PLAIN, 8MM	2		G
		29	94111-08000	WASHER, SPRING, 8MM	4		1140000 G
		30	94201-16120	PIN, SPLIT, 1.6X12	1		1140000 G
			94201-16150	PIN, SPLIT, 1.6X15	1	1140001	G
		31	94201-16150	PIN, SPLIT, 1.6X15	2		G
		32	94201-30300	PIN, SPLIT, 3.0X30	1		1140000 G
			94201-30250	PIN, SPLIT, 3.0X25	1	1140001	G
		33	95011-62000	RUBBER B, STAND STOPPER	1		G
		34	95014-71701	SPRING G, MAIN STAND	1		G
			95014-71702	SPRING G, MAIN STAND	1		G
		35	95014-73100	SPRING A, BRAKE ROD	1		G
		36	95015-31000	JOINT A, BRAKE ARM	1		1112473 G
			95015-32001	JOINT B, BRAKE ARM	1	1112474	G
		37	95015-41000	NUT A, BRAKE ROD ADJUST	1		1112473 G
			95015-42000	NUT B, BRAKE ROD ADJUST	1	1112474	G
		38	95015-52000	PIN B, BRAKE ROD JOINT	1		G

E 13

F-15

Rear fender · Carrier · Tool



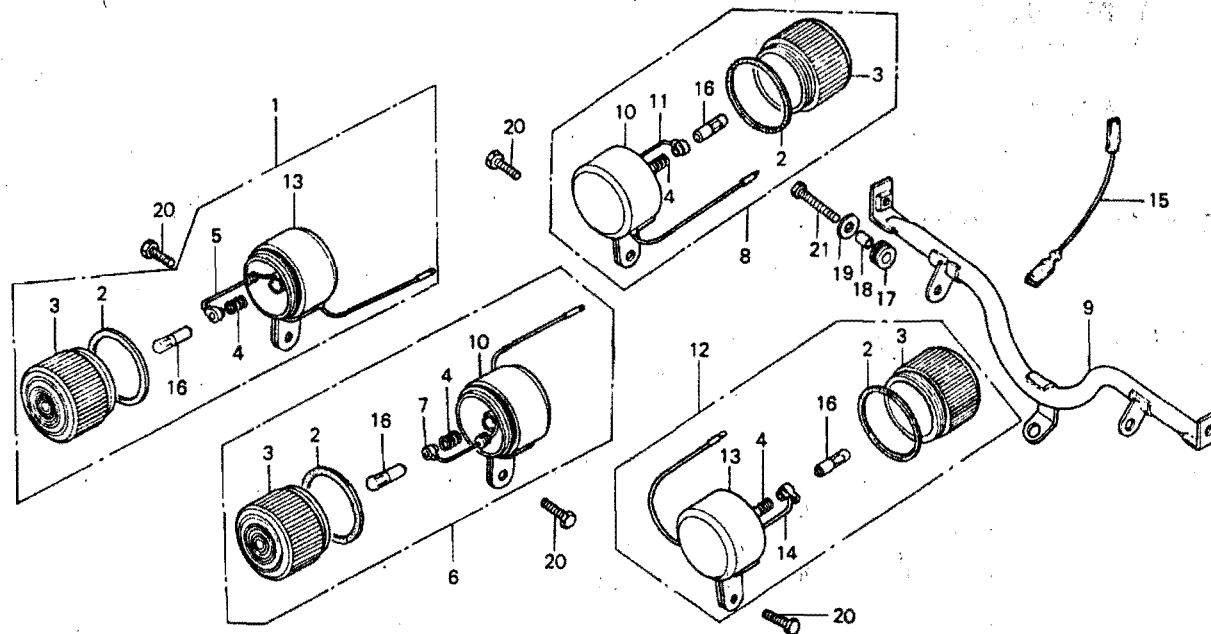
B130-26

Service Item	F.R.T.	Ref. No.	Part No.	Description	Reqd. No. Z50J1	Serial No.	Area code
REAR FENDER COMP.	0.3	1	80100-130-610	FENDER COMP., RR.	1		G
LUGGAGE CARRIER	0.2	1	80100-130-690XM	FENDER COMP., RR.	1		DK, DM, F, SA, U
		2	80101-310-000	RUBBER, RR. FENDER CUSHION	2		
		3	80105-061-000	CUSHION A, RR. FENDER	2		
		4	80108-061-010	COLLAR A, RR. FENDER	2		
		5	81200-130-690XM	CARRIER, LUGGAGE	1		DK, DM, SA, U
		6	83513-044-000	DRIVER	1		DK, DM, SA, U
		7	84705-310-000	COLLAR, RR. FENDER	2		
		8	87506-130-640	MARK, BATTERY CAUTION	1		DK, DM, SA, U
		9	87511-323-670	LABEL, HELMET HOLDER	1		DK, DM, G, SA, U
		10	89101-063-000	BAG, TOOL	1		DK, DM, SA, U
		11	89216-130-690	WRENCH, SPARK PLUG	1		
		12	89217-045-670	BAR, HANDLE	1		
		13	90514-700-000	WASHER, TANK COLLAR LOCKING	4		
		14	90611-130-690	RUBBER A, RR. FENDER	2		
		15	92000-06020	BOLT, HEX., 6X20	4	1140000	DK, DM, F, G, U
		16	92000-06022	BOLT, HEX., 6X22	2	1140001	DK, DM, F, G, U
		17	92000-06025	BOLT, HEX., 6X25	2	1140001	SA DK, DM, F, G, U
		18	92000-08020-0A	BOLT, HEX., 8X20	2		DK, DM, SA, U
		19	94101-08000	WASHER, PLAIN, 8MM	2		DK, DM, SA, U
		20	94111-08000	WASHER, SPRING, 8MM	2		DK, DM, SA, U
		21	95012-11000	BAND A, BATTERY	1		DK, DM, SA, U
		22	99001-10120	SPANNER, 10X12	1		DK, DM, SA, U

E 14

F-16

Winker
(DK, DM, SA, U)



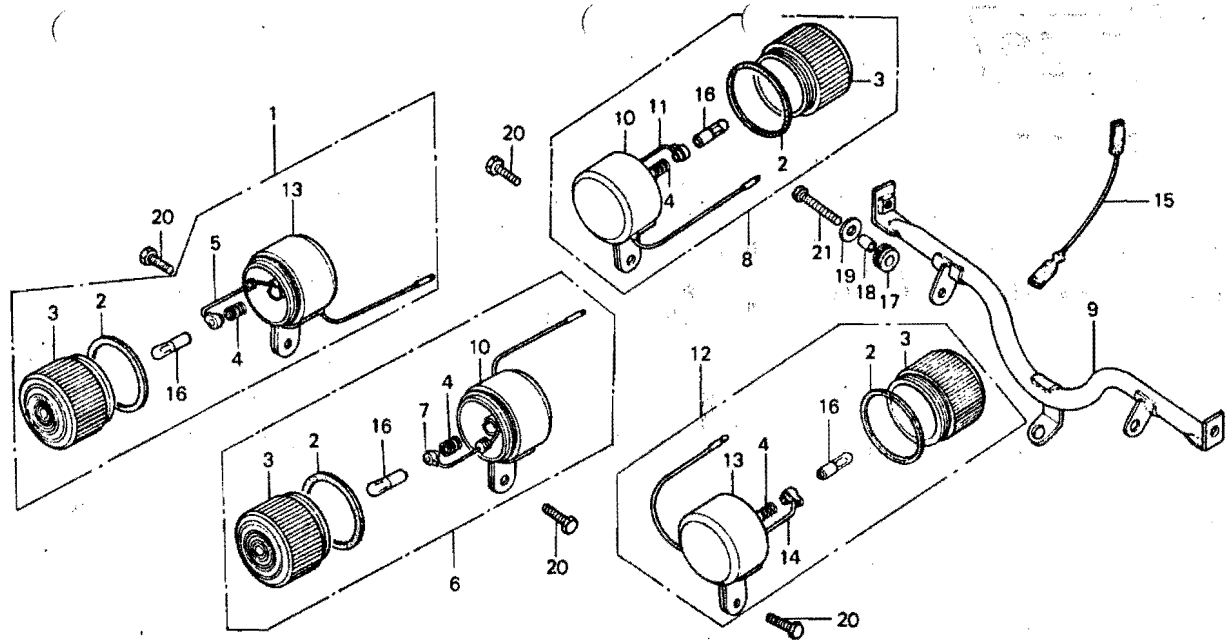
B130-59

Service item	F.R.T.	Ref. No.	Part No.	Description	Reqd. No. Z50J1	Serial No.	Area code
WINKER ASSY. and it related parts	0.1	1	33400-130-640	WINKER ASSY., R. FR. (6V BW)	1		DK, DM, SA, U
	0.2	2	33406-081-156	PACKING, WINKER LENS	4		DK, DM, SA, U
REAR WINKER STAY COMP.		3	33415-044-821	LENS, WINKER (OATICHI)	4		DK, DM, SA, U
			33402-044-821	LENS, WINKER (OATICHI)	4		
		4	33417-044-821	SPRING, WINKER CONTACT	4		DK, DM, SA, U
		5	33420-130-640	CORD COMP., R. FR. WINKER	1		DK, DM, SA, U
		6	33450-130-640	WINKER ASSY., L. F.	1		DK, DM, SA, U
		7	33470-130-640	CORD COMP., L. FR. WINKER	1		DK, DM, SA, U
		9	33600-130-640	WINKER ASSY., R. RR.	1		DK, DM, SA, U
		9	33606-130-650	STAY COMP., RR. WINKER	1		U
		10	33611-130-640	BASE COMP., R. RR. WINKER	2		DK, DM, SA, U
			33401-130-640	BASE, R. FR. WINKER	2		
		11	33620-045-690	CORD, R. RR. WINKER	1		DK, DM, SA, U
			33610-130-640	CORD COMP., R. WINKER	1	1183846	DK, DM, SA, U
		12	33650-130-640	WINKER ASSY., L. RR.	1		DK, DM, SA, U
		13	33661-130-640	BASE COMP., L. RR. WINKER	2		DK, DM, SA, U
			33451-130-640	BASE, L. FR. WINKER	2		
		14	33670-045-690	CORD, L. RR. WINKER	1		DK, DM, SA, U
			33660-130-640	CORD COMP., L. WINKER	1	1183846	DK, DM, SA, U
		15	33712-130-650	CORD, RR. WINKER EARTH	1		U
		16	34905-001-000	BULB, WINKER (6V8W)	4		DK, DM, SA, U
		17	84905-333-000	RUBBER, CUSHION	2		U
		18	84906-118-000	COLLAR, NUMBER B-ACKET	2		U
		19	90525-030-000	WASHER B, HANDLE HOLDER	2		U
				SETTING			
		20	92000-06012	BOLT, HEX., 6X12	4		DK, DM, SA, U

E 15

F-16

**Winker
(DK, DM, SA, U)**



B130-59

Service Item

F.R.T.

Ref. No.

Part No.

Description

Reqd. No.
Z50J1

Serial No.

Area code

21 92000-06022
92000-06025

BOLT, HEX., 6X22
BOLT, HEX., 6X25

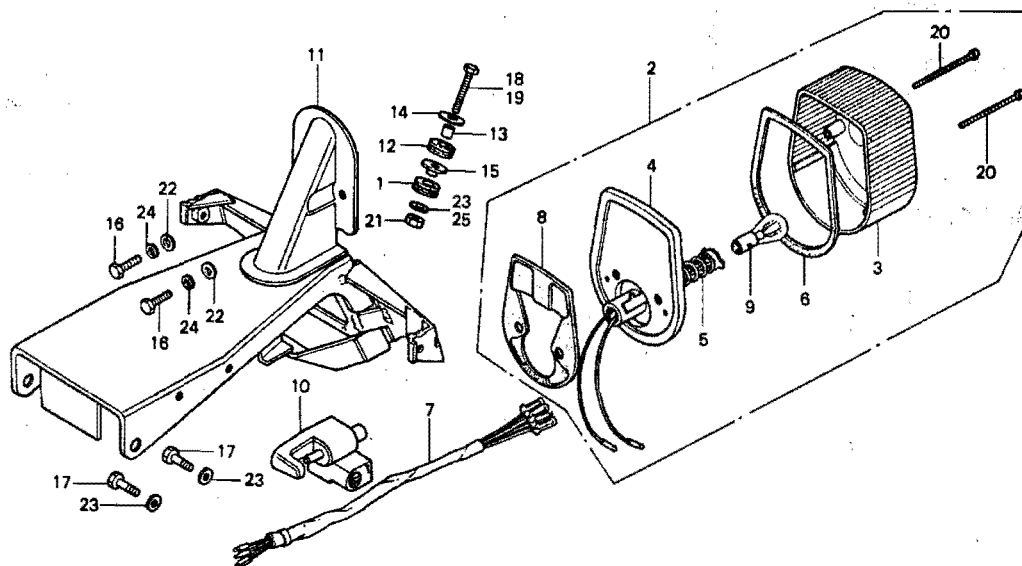
2
2 1140001 1140000 U

U
U

E 16

F-17

Taillight
(DK, DM, SA, U)



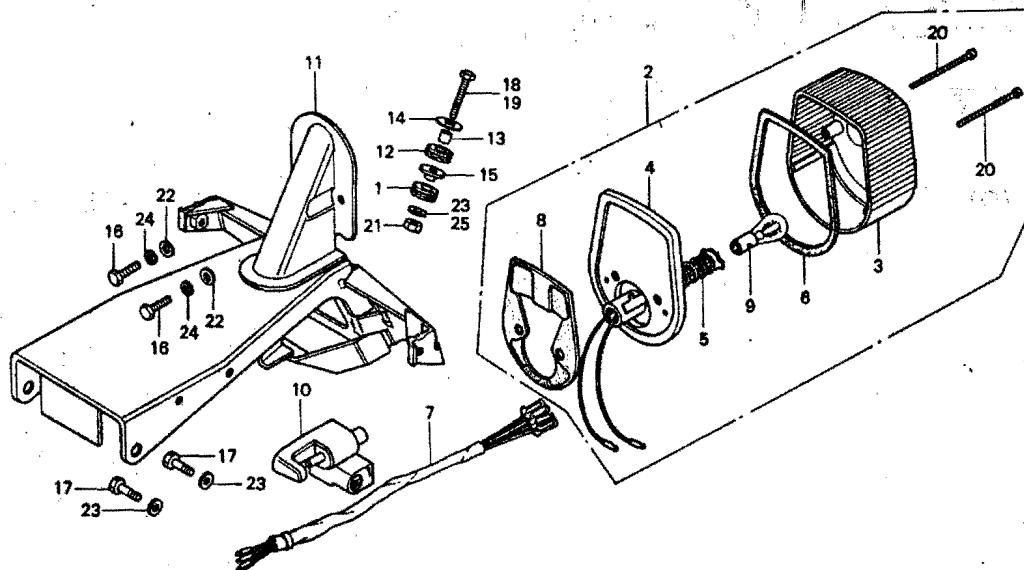
B130-28

Service item	F.R.T.	Ref. No.	Part No.	Description	Reqd. No. Z50J1	Serial No.	Area code
TAILLIGHT UNIT/BASE	0.2	1	32983-011-000	GRUMMET, WIRE HARNESS	1		DK, DM, SA, U
●TAILLIGHT SUB CORD		2	33701-045-690	TAILLIGHT UNIT	1		DK, DM, SA, U
●HELMET HOLDER ASSY		3	33702-045-690	LENS, TAILLIGHT	1		DK, DM, SA, U
BULB/LENS	0.1	4	33703-098-003	BASE, TAILLIGHT (STANLEY)	1		DK, DM, SA, U
NUMBER PLATE BRACKET	0.4	5	33708-077-671	CORD COMP., TAILLIGHT	1		DK, DM, SA, U
		6	33709-074-671	PACKING, TAILLIGHT LENS	1		DK, DM, SA, U
		7	33713-130-690	SUB CORD, TAILLIGHT	1		DK, DM, SA, U
		8	33719-074-670	PACKING, TAILLIGHT BASE	1		DK, DM, SA, U
		9	34906-030-013	BULB, STOP & TAILLIGHT (6V10/3W STANLEY)	1		DK, DM, SA, U
		10	50710-110-701	HOLDER ASSY., HELMET	1		DK, DM, SA, U
		11	84701-130-690B	BRACKET, NUMBER PLATE	1		DK, DM, SA, U
		12	84905-333-000	RUBBER, CUSHION	1		U
		13	84906-118-000	COLLAR, NUMBER BRACKET	1		U
		14	90525-030-000	WASHER B, HANDLE HOLDER	1		U
		15	90563-045-000	WASHER, NUMBER BRACKET MOUNT SETTING	1		DK, DM, SA, U
		16	92000-05012-0b	BOLT, HEX., 5X12	2		DK, DM, SA, U
		17	92000-06010	BOLT, HEX., 6X10	2		DK, DM, SA, U
		18	92000-06016	BOLT, HEX., 6X16	1		DK, DM, SA, U
		19	92000-06632	BOLT, HEX., 6X32	1		U
		20	93506-04045-0B	SCREW, PAN, 4X45	2		DK, DM, SA, U
		21	94001-06000	NUT, HEX., 6MM	1		DK, DM, SA, U
		22	94101-05000	WASHER, PLAIN, 5MM	2		DK, DM, SA, U

F 1

F-17

**Taillight
(DK, DM, SA, U)**



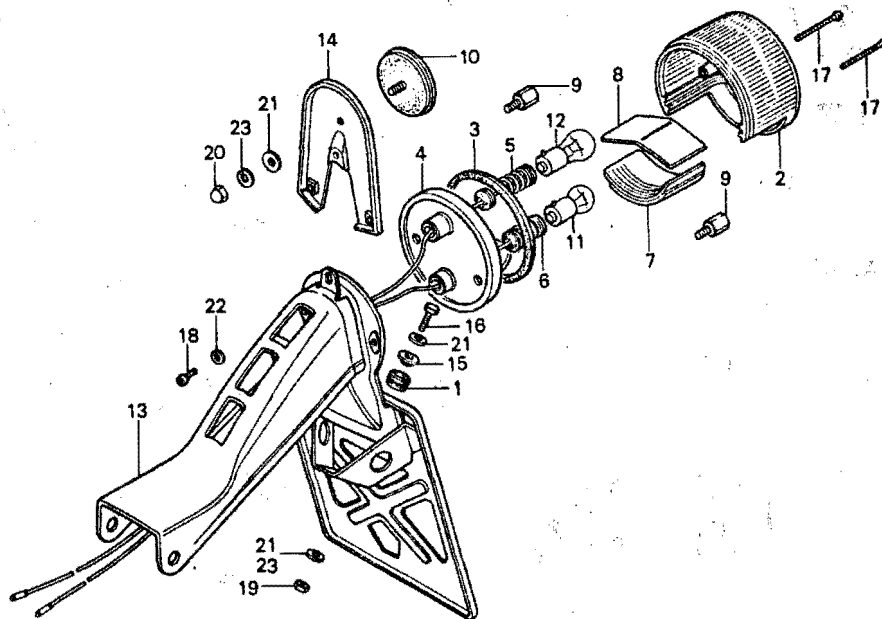
B130-28

Service item	F.R.T.	Ref. No.	Part No.	Description	Reqd. No. Z50J1	Serial No.	Area code
		23	94101-06000	WASHER, PLAIN, 6MM	3	1140000	DK, DM, U
		24	94111-05000	WASHER, SPRING, 5MM	2	1140001	DK, DM, U
		25	94111-06000	WASHER, SPRING, 6MM	2		SA
					1	1140001	DK, DM, SA, U
					1		DK, DM, U
							SA

F 2

F-17-1

Taillight (G)



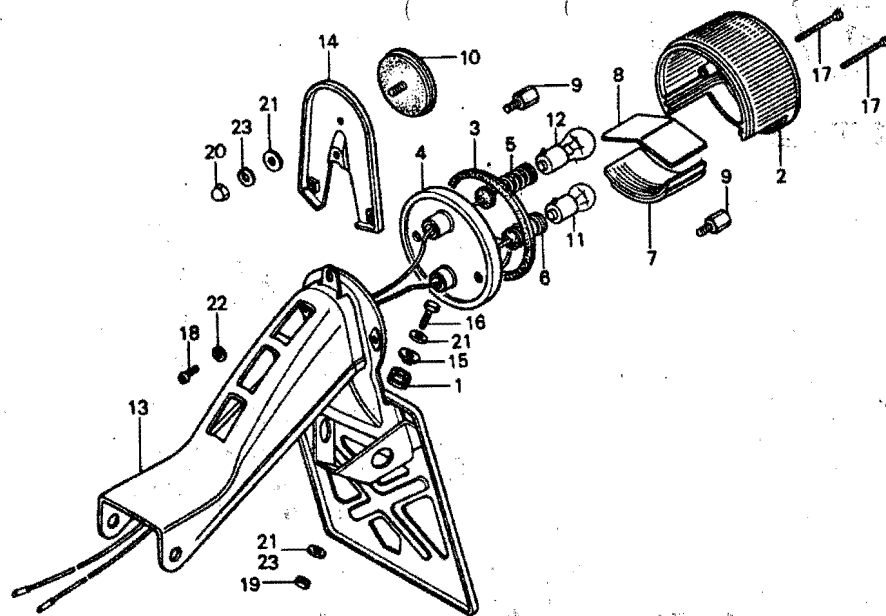
B130-60

Service item	F.R.T.	Ref. No.	Part No.	Description	Reqd. No. Z50J1	Serial No.	Area code
TAILLIGHT UNIT/BASE	0.2	1	32983-011-000	GPOMMET, WIRE HARNESS	1		G
BULB/LENS	0.1	2	33701-051-000	LENS, TAIL & STOP LIGHT	1		G
●REFLEX REFLECTOR/BASE		3	33709-051-000	PACKING, TAILLIGHT LENS	1		G
NUMBER PLATE BRACKET	0.3	4	33710-051-000	SOCKET COMP., TAILLIGHT	1		G
		5	33713-098-610	CORD, STOP LIGHT	1		G
		6	33714-098-610	CORD, TAILLIGHT	1		G
		7	33715-051-000	LENS, LICENSE	1		G
		8	33716-051-000	PLATE, INTERCEPTION	1		G
		9	33717-051-010	BOLT, TAILLIGHT SETTING	2		G
		10	33741-333-610	REFLECTOR, REFLEX	1	1141262	G
			33741-333-611	REFLECTOR, REFLEX	1	1141263	G
		11	34905-383-611	BULB, TAILLIGHT (6V54) (LOCAL PROCUREMENT PART)	1		G
		12	34905-386-611	BULB, WINKER (6V18W) (LOCAL PROCUREMENT PART)	1		G
		13	84701-130-610	BRACKET, NUMBER PLATE	1		G
		14	84705-130-610	BRACKET, REFLEX REFLECTOR	1		G
		15	90563-045-000	WASHER, NUMBER BRACKET MOUNT	1		G
		16	92000-06016	BOLT, HEX., 6X16	1		G
		17	93500-03045-00	SCREW, PAN, 3X45	2		G
		18	93500-05008-0A	SCREW, PAN, 5X8	1		G
		19	94001-06000	NUT, HEX., 6MM	1		G
		20	94021-06000	NUT, CAP, 6MM	1		G
		21	94101-06000	WASHER, PLAIN, 6MM	3	1140000	G
					2	1140001	G
		22	94111-05000	WASHER, SPRING, 5MM	1		G

F 3

F-17-1

Taillight (G)



B130-60

Service Item

F.R.T.

Ref. No.

Part No.

Description

Reqd. No.
Z60J1

Serial No.

Area code

23 94111-06000

WASHER, SPRING, 6MM

1
2

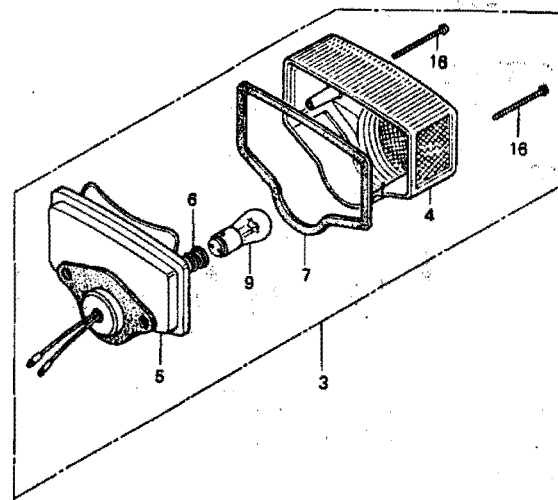
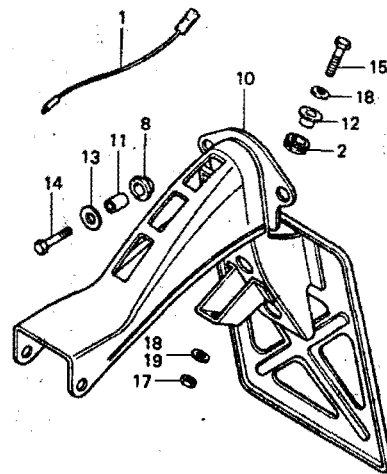
1140001

1140000
G
G

F 4

F-17-2

Taillight (F)



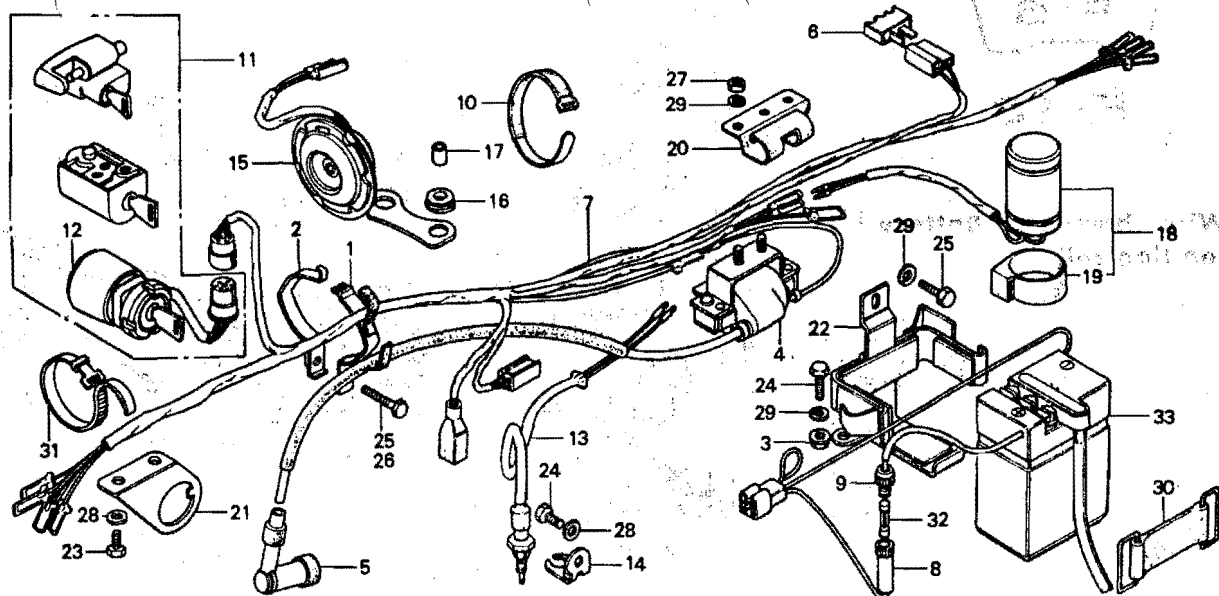
B130-61

Service item	F.R.T.	Ref. No.	Part No.	Description	Reqd. No. Z50J1	Serial No.	Area code
TAILLIGHT UNIT/BASE	0.2	1	32105-130-620	SUB CORD, EARTH	1	1131777	F
BULB/LENS	0.1	2	32983-011-000	GROMMET, WIRE HARNESS	1		F
NUMBER PLATE BRACKET	0.3	3	33701-098-631	TAILLIGHT UNIT (6V21/5W)	1	1131913	F
			(STANLEY)				
			33701-098-632	TAILLIGHT UNIT (6V21/5W)	1	1131914	F
			(STANLEY)				
		4	33702-323-603	LENS, TAILLIGHT	1	1131913	F
			33702-323-604	LENS, TAILLIGHT	1	1131914	F
		5	33703-077-671	BASE, TAILLIGHT	1		F
		6	33708-077-671	CORD COMP., TAILLIGHT	1		F
		7	33709-077-671	PACKING, TAILLIGHT LENS	1		F
		8	33718-077-671	PACKING A, TAILLIGHT BASE	1		F
		9	34906-098-931	BULB, STOP & TAILLIGHT	1		F
			(6V21/5W)				
		10	84701-130-6208	BRACKET, NUMBER PLATE	1		F
		11	84706-286-000	COLLAR, NUMBER BRACKET SET	2		F
		12	90563-045-000	WASHER, NUMBER BRACKET MOUNT	1		F
		13	90581-310-000	WASHER, PLAIN, 20MM	2		F
		14	92000-05020-08	BOLT, HEX., 5X20	2		F
		15	92000-06016	BOLT, HEX., 6X16	1		F
		16	93500-04050-4J	SCREW, PAN, 4X50	2		F
		17	94001-06000	NUT, HEX., 6MM	1		F
		18	94101-06000	WASHER, PLAIN, 6MM	2	1140000	F
		19	94111-06000	WASHER, SPRING, 6MM	1	1140001	F

F 5

F-18

Wire harness · Battery · Ignition coil



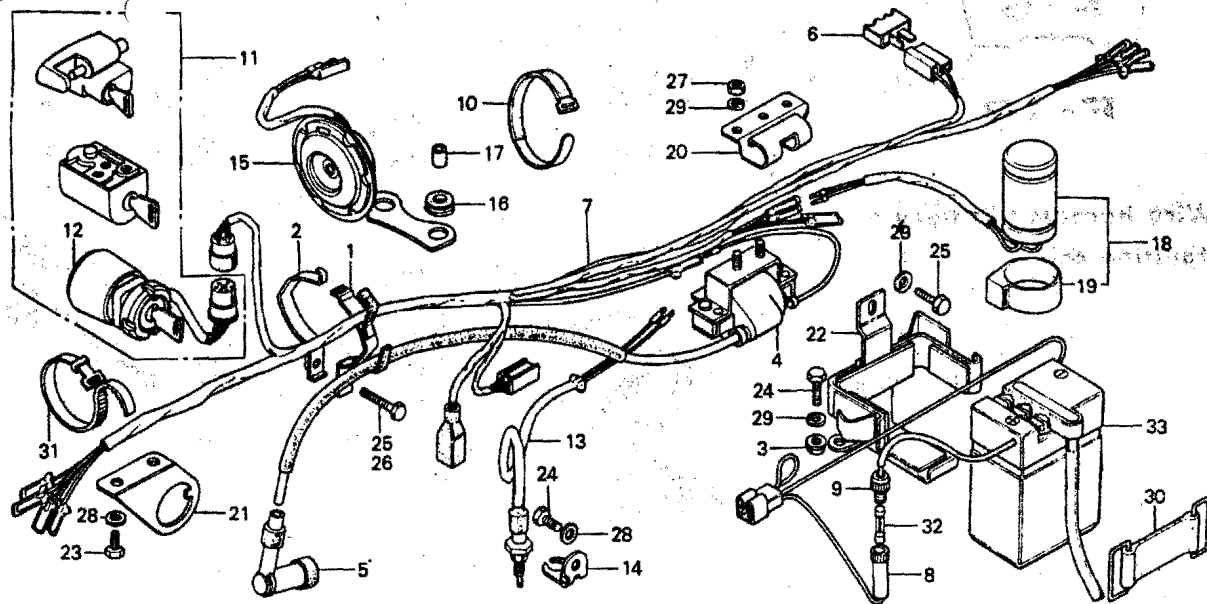
B130-29A

Service item	F.R.T.	Ref. No.	Part No.	Description	Reqd. No. Z50J1	Serial No.	Area code
AIR CLEANER SETTING BAND • One or all	0.2	1	17240-120-010	BAND A, AIR CLEANER SETTING	1		
		2	17241-120-010	BAND B, AIR CLEANER SETTING	1		
A.C.IGNITION COIL ASSY. RECTIFIER ASSY.	0.4 0.1	3	18362-720-000	NUT, FLANGE, 6MM	1		DK, DM, SA, U
•WINKER RELAY ASSY. •BATTERY ASSY.		4	30500-120-003	COIL ASSY., A.C. IGNITION	1	1132535	F, G
		5	30500-120-005	COIL ASSY., A.C. IGNITION	1		
			30700-063-681	CAP ASSY., NOISE SUPPRESSOR	1		DK, DM, SA, U
			30700-259-810	CAP ASSY., NOISE SUPPRESSOR	1		
WIRE HARNESS	0.6	6	31700-124-003	RECTIFIER ASSY., SILICON (STANLEY)	1		DK, DM, SA, U
KEY SET	0.9						
COMBINATION SWITCH HORN ASSY.	0.3 0.2		31700-124-008	RECTIFIER ASSY., SILICON (SHINOENGEN)	1		DK, DM, SA, U
•BRAKE SWITCH •BATTERY TRAY COMP.		7	32100-130-610	HARNNESS, WIRE	1		G
			32100-130-620	HARNNESS, WIRE	1	1131776	F
			32100-130-690	HARNNESS, WIRE	1	1129321	DK, DM, U
			32100-130-691	HARNNESS, WIRE	1	1129322	DK, DM, U
					1		SA
			32100-130-621	HARNNESS, WIRE	1	1131777	F
		8	32106-041-000	CONNECTOR A, FUSE	1		DK, DM, SA, U
		9	32112-041-000	CONNECTOR B, FUSE	1		DK, DM, SA, U
		10	32161-130-000	BAND A4, WIRE	1	1129322	DK, DM, U
					1		SA
		11	35010-130-610	KEY SET	1		G
			35010-130-620	KEY SET	1		F
			35010-130-650	KEY SET	1	1117839	DK, DM, U
			35010-130-640	KEY SET	1	1117840	DK, DM, U
			35010-130-641	KEY SET	1	1129322	DK, DM, U
					1		SA
		12	35100-130-611	SWITCH ASSY., COMBINATION	1		G

F 6

F-18

Wire harness · Battery · Ignition coil



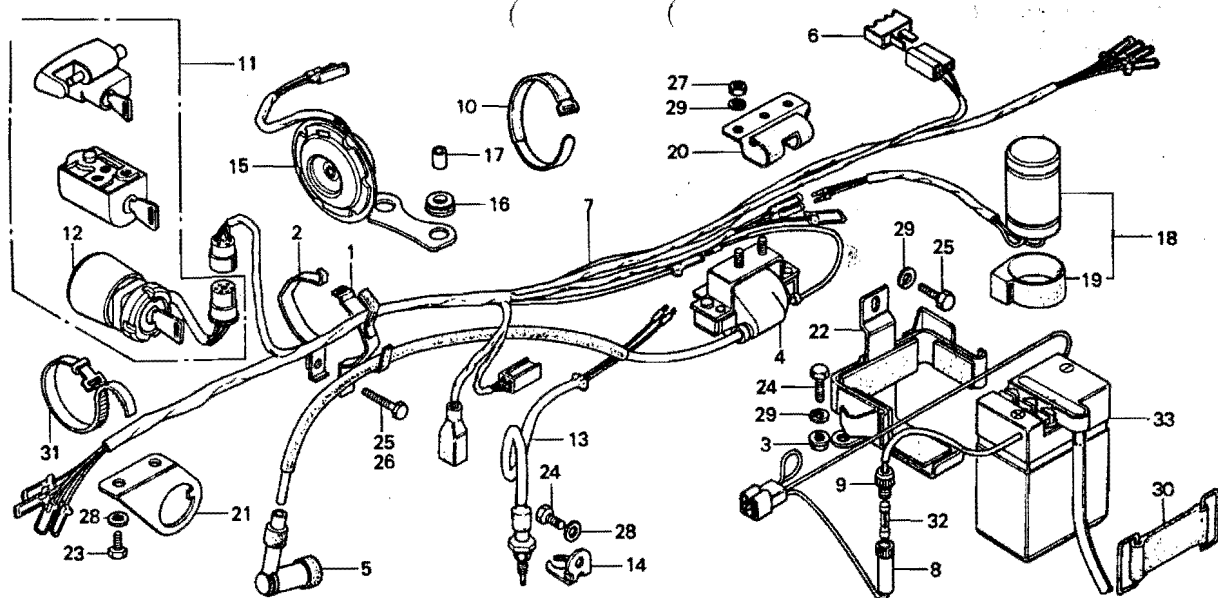
B130-29A

Service item	F.R.T.	Ref. No.	Part No.	Description	Reqd. No. Z50J1	Serial No.	Area code
			35100-130-621	SWITCH ASSY., COMBINATION	1		F
			35100-130-641	SWITCH ASSY., COMBINATION	1	1129321	DK, DM, U
			35100-130-642	SWITCH ASSY., COMBINATION	1	1129322	DK, DM, U
					1		SA
		13	35350-130-640	SWITCH ASSY., STOP	1		
		14	35358-130-690	BRACKET, STOP SWITCH	1		
		15	38100-130-641	HORN ASSY.	1		OK, DM, SA, U
					2		DK, DM, SA, U
					2		DK, DM, SA, U
		17	38102-032-300	GRUMMET, HORN	2		DK, DM, SA, U
		18	38300-098-000	BUSH, HORN GRUMMET	2		DK, DM, SA, U
				RELAY ASSY., WINKER	1		DK, DM, SA, U
		19	38306-292-000	SUSPENSION, WINKER RELAY	1		DK, DM, SA, U
		20	38308-130-690	CLAMPER, WIRE HARNESS	1		DK, DM, SA, U
					1		
		21	50351-130-6908	BRACKET, SWITCH	1	1114863	DK, DM, F, G, U
			50351-130-6918	BRACKET, SWITCH	1	1114864	DK, DM, F, G, U
					1		SA
		22	50380-130-6908	TRAY COMP., BATTERY	1		DK, DM, SA, U
		23	92000-06010	BOLT, HEX., 6X10	2		F, G
		24	92000-06012	BOLT, HEX., 6X12	2		DK, DM, SA, U
					1		F, G
		25	92000-06016	BOLT, HEX., 6X16	2	1140000	DK, DM, U
					1	1140000	F, G
					1	1140001	DK, DM, U
					1		SA
		26	92000-06020	BOLT, HEX., 6X20	1	1140001	DK, DM, F, G, U
					1		SA
		27	94001-06000	NUT, HEX., 6MM	2		

F 7

F-18

**Wire harness · Battery ·
Ignition coil**



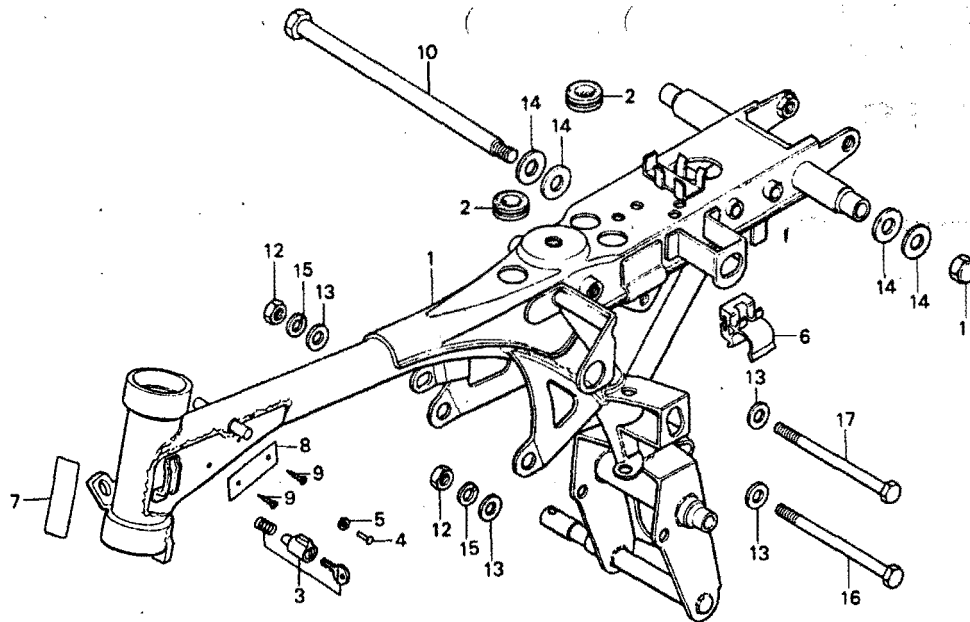
B130-29A

Service item	F.R.T.	Ref. No.	Part No.	Description	Reqd. No. Z50J1	Serial No.	Area code
		28	94101-06000	WASHER, PLAIN, 6MM	3		
		29	94111-06000	WASHER, SPRING, 6MM	4		DK, DM, SA, U
					2		F, G
		30	95012-11000	BAND A, BATTERY	1		DK, DM, SA, U
		31	95014-62300	BAND B3, WIRE	1		
		32	98200-10700	FUSE A (7A)	1		DK, DM, SA, U
		33	98201-61220	BATTERY ASSY.	1		DK, DM, SA, U

F 8

F-19

Frame body



B130-62

Service item	F.R.T.	Ref. No.	Part No.	Description	Reqd. No. Z50J1	Serial No.	Area code	
FRAME BODY COMP.	☆4.0	1	50100-130-6102A	BDY COMP., FRAME *NH-1*	1		F,G	
			50100-130-640B	BDY COMP., FRAME	1		DN, DP, SA, J	
		2	50163-063-000	GROMMET, FEED TUBE	2		F,G	
		3	53600-051-000	LOCK COMP., STEERING HANDLE	1		F,G	
		4	53603-051-000	RIVET, 4.1MM	1		F,G	
		5	53604-098-940	WASHER, 4.5MM	1		F,G	
		6	83520-120-000	HOLDER, TOOL	1		F,G	
		7	87125-041-68U	PLATE, NAME	1		DN, DM, SA	
		8	87501-130-610	PLATE, REGISTERED NUMBER	1		G	
			87501-130-620	PLATE, REGISTERED NUMBER	1		F	
			87501-130-621	PLATE, REGISTERED NUMBER	1	1190816	1190815	F
		9	90841-001-000	SCREW, RIVET, 1.5X5	2		F	
			90841-001-000	SCREW, RIVET, 1.5X5	2		F,G,L	
		10	92000-10239-0B	BOLT, HEX., 10X239	1			
		11	94021-10000-0J	NUT, CAP, 10MM	1			
		12	94030-08000	NUT, HEX., 8MM	2			
		13	94101-08000	WASHER, PLAIN, 8MM	4			
14	94101-10000	WASHER, PLAIN, 10MM	4					
15	94111-08000	WASHER, SPRING, 8MM	2					
16	95300-08098-00	BOLT, HEX., 8X98	1					
17	95300-08111-00	BOLT, HEX., 8X111	1					

Part No.	Address No.												
		14401-035-003	C5	16962-081-005	E1	22860-041-000	C7	28305-001-000	E8	33417-044-821	E14		
		14431-035-000	C4			22860-046-000	C7		E11	33420-130-640	E14		
		14451-035-000	C4	17000		22901-001-000	C7	28311-001-000	E8	33450-130-640	E14		
		14500-035-010	C5			22911-035-010	C12		E11	33451-130-640	E14		
		14502-086-000	C5	17111-130-000	C2					33470-130-640	E14		
		14531-035-000	C5	17111-130-610	C2	23000		30000		33600-130-640	E14		
		14541-086-010	C5	17121-130-640	E1					33606-130-650	E14		
		14542-086-000	C5	17211-120-000	E3	23110-098-740	C14	30202-041-015	C10	33610-130-640	E14		
		14550-086-010	C5	17221-120-010	E3	23112-041-040	C7	30205-041-005	C10	33611-130-640	E14		
		14561-086-010	C5	17222-120-020	E3	23120-041-000	C12	30250-035-005	C10	33620-045-690	E14		
		14562-086-000	C5	17225-120-000	E3	23211-041-020	C14	30250-041-005	C10	33650-130-640	E14		
		14566-086-030	C5	17231-120-020	E3	23221-041-040	C14	30500-120-003	F5	33660-130-640	E14		
	11000	14610-086-000	C5	17240-120-010	F5	23421-076-000	C14	30500-120-005	F5	33661-130-640	E14		
		14615-035-000	C5	17241-120-010	F5	23431-041-040	C14	30700-063-681	F5	33670-045-690	E14		
		14670-035-030	C5	17253-120-010	E3	23441-041-060	C14	30700-259-810	F5	33701-045-690	E16		
		14675-035-060	C5	17255-098-000	E3	23471-041-040	C14			33701-051-000	F2		
		14711-036-000	C4	17500-130-640ZA	E1	23481-041-020	C14	31000		33701-098-631	F4		
		14721-036-010	C4	17500-130-640ZB	E1	23800-045-671	C14			33701-098-632	F4		
		14730-028-015	C4	17500-130-640ZC	E1	23802-045-670	C14	31100-120-770	C10	33702-045-690	E16		
		14731-028-000	C4	17611-045-670	E1	23911-041-010	C14	31100-130-672	C10	33702-323-603	F4		
		14751-035-660	C4	17613-120-000	E1			31121-098-015	C10	33702-323-604	F4		
		14761-035-000	C4	17620-045-670	E1	24000		31141-120-760	C10	33703-077-671	F4		
		14771-035-600	C4	17620-045-671	E1			31141-130-671	C10	33703-098-003	E16		
	12000	14776-028-000	C4	17631-001-000	E1	24211-087-000	C16	31700-124-003	F5	33708-077-671	E16		
		14781-001-010	C4	17631-096-700	E1	24221-041-000	C16	31700-124-008	F5		F4		
				17682-634-003	E1	24261-028-010	C16			33709-051-000	F2		
			15000	17910-130-640	D2	24263-028-000	C16	32000		33709-074-671	E16		
				17911-023-000	D2	24301-045-670	C16			33709-077-671	F4		
		12023-035-811	C2	15119-035-020	C9	24411-041-020	C16	32100-130-610	F5	33710-051-000	F2		
		12023-051-320	C2	15300-035-000	C9	24411-041-030	C16	32100-130-620	F5	33712-130-650	E14		
		12101-041-030	C2	15311-035-015	C9	24421-041-000	C16	32100-130-621	F5	33713-098-610	F2		
		12101-041-040	C2	15321-035-003	C9	24430-041-000	C16	32100-130-690	F5	33713-130-690	E16		
		12191-118-670	C2	15329-035-003	C9	24430-041-010	C16	32100-130-691	F5	33714-098-610	F2		
		12200-041-030	C2	15331-035-004	C9	18240-130-640ZA	E5	32105-130-620	F4	33715-051-000	F2		
		12200-041-040	C2	15332-035-004	C9	18291-001-010	E5	32106-041-000	F5	33716-051-000	F2		
		12251-065-740	C2	15382-035-003	C9	18292-290-000	E5	32112-041-000	F5	33717-051-010	F2		
		12301-035-000	C2	15383-035-000	C9	18292-329-000	E5	32161-130-000	F5	33718-077-671	F4		
		12301-035-000	C2	15421-035-010	C11	18300-130-610	E5	32981-035-000	C11	33719-074-670	E16		
		12394-035-000	C2	15650-098-730	C6	18300-130-611	E5	32983-011-000	E16	33741-333-610	F2		
		12395-035-000	C2	15761-045-000	C11	18300-130-640	E5	24700-120-000	F2	33741-333-611	F2		
						18300-130-641	E5						
	13000			16000		18353-120-000CT	E5	24701-045-760	E8	32983-126-000	O2	34000	
		13000-041-030	C12	16010-081-004	E4	18360-120-000X	E5	24701-130-740	E8				
		13010-036-000	C12	16011-143-620	E4	18361-120-000	E5		E11	33000		34901-045-003	O4
		13020-036-000	C12	16011-147-004	E4	18362-720-000	F5	24781-205-000	E8			34901-130-611	O6
		13030-036-000	C12	16012-130-610	E4	18373-120-000	E5		C11	33100-045-003	O4	34901-351-621	O7
		13040-036-000	C12	16012-130-640	E4	18374-120-000	E5			33100-045-620	O7	34903-382-621	O7
		13050-036-000	C12	16013-143-620	E4			25000		33100-130-611	O6	34905-001-000	E14
		13101-036-010	C12	16014-130-640	E4					33101-045-003	O4	34905-383-611	F2
		13102-036-010	C12	16015-130-640	F4	22101-040-030	C7	25551-918-007	C7	33101-130-611	O6	34905-386-611	F2
		13103-036-010	C12	16016-143-620	E4	22111-040-000	C7	25555-065-000	C7	33101-230-621	O7	34906-030-013	E16
		13104-036-010	C12	16022-081-004	F4	22119-040-000	C7			33102-001-003	O4	34906-098-931	F4
		13105-036-010	C12	16022-143-620	E4	22120-040-030	C7	28000		33107-001-003	O4	34908-001-000	O4
		13111-036-000	C12	16100-130-611	E4	22131-035-020	C12	28211-040-035	C14	33108-051-000	O7		O6
		13115-001-000	C12	16100-130-641	E4	22201-040-000	C7	28223-035-035	C14	33115-050-910	O6		O7
		13201-036-000	C12	16100-130-642	E4	22310-041-010	C7	28251-035-065	C14	33117-001-003	O4		
		13201-036-010	C12	16118-121-014	E4	22321-041-000	C7	28262-041-730	C14	33120-045-003	O4	35000	
		13211-035-000	C12	16201-045-000	C2	22331-041-000	C7	28281-035-018	C14	33120-130-611	O6		
		13310-035-050	C12	16202-045-720	E3	22351-120-690	C7	28300-120-000	E8	33120-230-621	O7	35010-130-610	F5
		13311-035-050	C12	16211-045-010	C2	22351-120-691	C7		E11	33125-200-030	O4	35010-130-620	F5
		13321-041-020	C12	16236-045-010	C11	22401-040-010	C7	24301-120-000	E11	33128-292-670	O4	35010-130-640	F5
		13381-035-010	C12	16950-045-005	E1	22411-041-000	C7		E11	33130-045-003	O4	35010-130-641	F5
				16952-081-005	E1	22421-040-000	C7	28302-033-000	E8	33130-045-620	O7	35010-130-650	F5
				16953-081-005	E1	22811-040-020	C7		E11	33130-130-611	O6	35100-130-611	F5
				16954-045-005	E1	22820-918-000	C7	28303-001-000	E8	33140-130-640	E14	35100-130-621	F6
	14000			16955-028-004	E1	22825-046-000	C7		E11	33401-130-640	E14	35100-130-641	F6
		14101-041-020	C4	16956-028-004	E1	22830-041-000	C7	28304-001-000	E8	33402-044-821	E14	35100-130-642	F6
		14311-035-000	C12	16958-081-005	E1	22846-040-010	C7		E8	33406-081-156	E14	35200-130-621	O2
		14321-035-010	C5						E11	33415-044-821	E14	35200-130-640	O2

Part No.	Address No.				
		93500-03006-0A	E2	94101-05000	D6
		93500-03012-0A	D3		95000
		93500-03045-0B	F2		07
		93500-04008-0A	C10		E5
		93500-04010-0A	C10	94101-06000	E16
		93500-04012-0A	E4		95001-180-40
		93500-04025-0A	E3		95001-45260-40
		93500-04045-0B	E16		95002-02070
		93500-04050-4J	F4		95002-02080
		93500-05006-0A	E5		95011-40000
		93500-05008-0A	F2		E5
		93500-05010-0A	C8		E7
91305-028-158	C3		C9		95011-62000
91306-035-000	C3	93500-05012-0A	D5	94101-08000	95012-11000
91307-035-000	C6		D6		F2
91317-703-000	C10		D7		F4
			D9		F7
		93500-05055-0A	D9		D5
		93500-06006	E5		95014-62300
		93500-06012	D9		95014-71701
			E5		95014-71702
92000-05012-0B	E16		E5		95014-72101
92000-05020-0B	F4	93500-06014	E5		95014-72102
92000-06010	E16	93500-06016	C9	94101-10000	95014-73100
	F6	93500-06020	C3		E12
92000-06012	E7		E7		E9
	E14	93500-06022	C9		E9
	F6	93500-06028	E7		E12
92000-06016	C16	93500-06038	E7	94101-12000	E12
	E16	93500-06040	C6	94102-14000	C3
	F2	93500-06050	C11	94111-03000	E9
	F4	93500-06060	C11	94111-04000	E10
	F6	93500-06065	C6		E12
92000-06020	D8		C11	94111-05000	D3
	E4	93600-05010-0A	C8		E10
	E9	93600-06012	D9		E12
	E12	93600-06016	C10	94111-06000	D12
	E13	93700-06020	C16		D14
	F6	93891-05012-00	D5		D16
92000-06022	E9		D6		95300-08098-00
	E12		D7		95300-08111-00
	E13	93891-06012-00	D9		F3
	E15				F4
92000-06025	C3	94000		94111-08000	F7
	E2				D3
	E13	94001-05000-05	D3		D5
	E15		D9		D6
92000-06028	D12	94001-06000	C3		D7
92000-06032	E16		D9		D12
92000-06035	D15		D14		D14
92000-06111	C3		D15		E2
92000-08016-0B	D4		E16		E5
	D6		F2		96211-06000
	D7		F4		E9
92000-08020-0A	E5		F6		E12
	E9	94001-06000-05	E5	94111-10000	E13
	E12	94001-08000-05	E2		F8
	E13	94002-08000-05	C5	94111-12000	D3
92000-08020-0B	D5	94002-10000-05	E9	94201-16120	D16
	D6	94021-06000	C3		E9
	D7		F2	94201-16150	E12
92000-08100-0A	E2	94021-10000-05	E6		E9
92000-10239-0B	F8		F8	94201-30250	E12
92800-12000	C11	94030-08000	C6	94201-30300	E9
			D12		E12
			D14	94301-08120	C3
			F8		C6
93000			F8		C3
93000-10032-0A	D10	94030-10000	C10	94301-08140	C15
93000-10032-0B	D10		D3	94510-16000	D12
93482-08020-00	E9	94101-04000	C10	94520-32000	
	E12	94101-05000	D5		